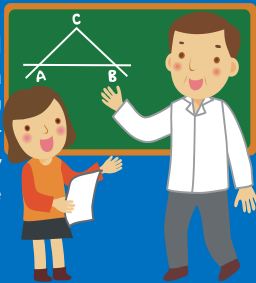


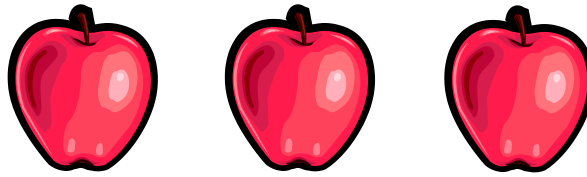


Did You Know...?

- You can apply for Medicaid at your local ISD (Income Support Division) office, but the wait can be anywhere from 2-6 hours.
- At APS, we can typically enroll you and your family in under an hour. Save some time by applying with an APS health care guide!
- If you are ineligible for Medicaid, we can refer you to a local healthcare guide who can enroll you in the NM Insurance Exchange during open enrollment.
- There is no "open enrollment" for applying for Medicaid. Unlike applying for insurance through the Federal Insurance Marketplace, you can apply for Medicaid year-round!
- Native Americans can apply for both Medicaid or regular insurance via the Health Insurance Marketplace year-round. No open enrollment or deadlines!
- At most School Based Health Centers, the center only serves the attending students at that school. At Atrisco Heritage Academy High School, the center serves the entire community.
- Your School Based Health Center can call in your prescriptions. If you have Medicaid, in most cases there is free or low-cost co-pays and the medicine is free.
- If you need a physical, you can contact your School Based Health Center to schedule it.



Being healthy will make you a more happy, successful, confident and smarter student.



APS Medicaid Enrollment: An easy, high-quality alternative.

Insurance Benefits include:

- **Doctor and Dental Visits**
- **School and Sport Physicals**
- **Vision and Hearing Exams**
- **Medicine Prescriptions**
- **Eyeglasses**
- **Hospital Care**
- **Mental Health Counseling**
- **Well Child Check-Up**
- **Immunizations**



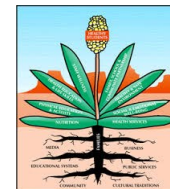
APS Medicaid Enrollment Project.
Healthy Students = Healthy Families.



ALBUQUERQUE
PUBLIC SCHOOLS

MEDICAID ENROLLMENT PROJECT

Easy, affordable, convenient, high quality healthcare for APS students & their families.



Student, Family, and Community Supports Division

What is the APS Medicaid Enrollment Project?

Albuquerque Public Schools believe that a student's health and well-being is important for their educational success. We feel that linking students to high quality healthcare is an instrumental tool in supporting their educational and personal well-being. Students can utilize their insurance through their schools' School Based Health Center or their own local health provider. Our goal is to provide insurance to students and their families so they will be more successful in school.

Need health insurance? We've got you covered.

Call and make an appointment today! We provide fast, efficient and easy Medicaid enrollment. You can enroll at APS City Center or at your school in some instances. If you qualify for insurance through the Health Insurance Marketplace, we can refer you to a local agency near where you live. If your school has a school based health center, they may even assist you in signing up.

Contact Us!

APS Medicaid Enrollment Project
Student, Family, & Community Supports

6400 Uptown Blvd. NE Ste. 380W
Albuquerque, NM 87125-0704

For questions or to make an appointment:



(505) 855-5261 (English)
(505) 855-9820 (Bilingual)

Medicaid Enrollment Project proudly brought to you by APS and The Atlantic Philanthropies.

What is a School Based Health Center?



Independent health care providers like First Choice, UNM and Presbyterian Medical Services offer health assistance for students on campus. These services are accessible, friendly and approachable for a family's busy schedule. Attending students can access their appointments on their own with parental consent. School based services include: Routine physical exams, mental health services, immunizations, routine lab tests, prescription medications, fitness counseling, nutrition education, wellness promotion, diagnosis and treatment of illness and injury, and more. Contact your SBHC for more information.



Where are the centers located?

Albuquerque HS (505) 244-1330
Atrisco Heritage Academy HS (505) 272-6009
East San Jose ES (505) 244-0334
Grant MS (505) 299-2113
Highland HS (505) 256-3363
Rio Grande HS (505) 452-3948
Roosevelt MS (505) 281-3602
School on Wheels (505) 247-0489
Van Buren MS (505) 256-2555
Washington MS (505) 248-1116
Wilson MS (505) 268-2828

- Services and hours of operation vary.
- Services are mostly for the students of that school only. Contact your school nurse.
- If your school does not have a center, you can use your insurance at participating local providers for high quality health care.



What do I need to enroll in healthcare coverage?

If you need health coverage, we've got you covered. When you make an appointment with one of our friendly APS healthcare guides, you are making an investment in you and your child's future. Signing up is easy. Your household income will need to be evaluated to qualify. You may need to provide some documents in order to enroll which may include:

- Proof of citizenship, tribal status or immigration status (such as social security number, birth certificate, etc.)
- Picture ID for both student and parent/caretaker (such as a school ID or drivers license.)
- Proof of residency (such as a utility bill.)
- Proof of income for the previous month (from your parent or caretaker.)
- The last 3 months' worth of unpaid medical bills for the student enrolling (if applicable.)

(Please note: Many non-citizens may be eligible!)

