



**ALBUQUERQUE
PUBLIC SCHOOLS**

Statistical Peers for Benchmarking

2010

September 2010
River Dunavin



ALBUQUERQUE PUBLIC SCHOOLS

BOARD OF EDUCATION

MARTIN ESQUIVEL

President

PAULA MAES

Vice President

DOLORES GRIEGO

Secretary

DAVID EUGENE PEERCY

Policy and Instruction Chair

LORENZO L. GARCIA

District Relations Chair

DAVID L. ROBBINS

Finance/Audit Chair

ROBERT D. LUCERO

Capital Outlay, Property and Technology Chair

Superintendent

WINSTON BROOKS

LINDA SINK

Chief Academic Officer

BRAD WINTER

Chief Operations Officer

RUBY ETHRIDGE

Associate Superintendent

DIANE KERSCHEN

Associate Superintendent

RAQUEL REEDY

Associate Superintendent

EDUARDO SOTO

Associate Superintendent

INSTRUCTION AND ACCOUNTABILITY

Rose-Ann McKernan, Executive Director

Research, Deployment & Accountability

Thomas Genné, Director

6400 Uptown Blvd. NE (400 EAST)

Albuquerque, New Mexico 87110

(505) 872-6870

www.rda.aps.edu

Statistical Peers for Benchmarking - 2010

Albuquerque Public Schools (APS) is organized using a feeder system known as the “Cluster System.” In 2010 there were 11 clusters consisting of the elementary and middle schools that feed students to 11 traditional high schools. For 2010, Volcano Vista High School was assigned to West Mesa Cluster and Atrisco Heritage Academy High School was assigned to Rio Grande. There is an additional cluster of alternative schools. Every APS cluster has a range of demographic diversity of students among its schools. The cluster system is effectively a geographic grouping of schools intended to provide administrative and other efficiencies.

For instructional and evaluative purposes, it can be useful to identify schools that have similar student populations. The Statistical Peers for Benchmarking tool represents a data-driven

Which APS schools are most alike in terms of student characteristics?

strategy to identify groups of similar schools. Nearly all students are enrolled in traditional APS schools for the same reason, a parent or guardian lives within the respective schools’ boundaries. This is why matching traditional APS schools on student demographics works fairly well to create Statistical Peer groups for comparison purposes. Statistical Peers addresses the question: “Which APS schools are most alike in terms of student characteristics?” The statistical method K-means cluster analysis was used to form the peer groups of schools based on available student characteristics variables. The variables used to group schools were the 2009-2010 proportions of students eligible for free or reduced-price lunch (FRL), English language learners (ELL), non-Anglo, Special Education (excluding gifted), and student mobility. Student mobility refers to students changing schools for reasons other than grade promotion. The statistical procedure assigns most demographically similar schools to groups called Statistical Peers. The resulting peer groups themselves are maximally distinct from one another. Once groups were formed, a panel of APS education professionals familiar with the unique characteristics of APS schools confirmed the functional validity of the statistical peer groups. When using the Statistical Peers for Benchmarking tool, consider each group an intact set of schools with relatively similar student populations.

The Statistical Peers for Benchmarking tool was designed for many uses such as comparing schools on measures of student achievement, or forming work groups during professional development programs. A primary goal for the tool is to foster collaboration. For example, once schools are identified as exemplary on some measure, i.e., reading performance, then personnel from high performing schools can be seen as resources for Statistical Peer schools. This approach facilitates sharing best practices among schools facing similar challenges. While comparing schools within one Statistical Peer group is informative, there will be situations for some schools to compare themselves to schools in other peer groups. For example, Special Education programs differ between school sites, thus there may be occasions to choose to make comparisons with schools while taking into account type of Special Education programs offered.

There are three sections in this report. First, the Statistical Peers for Benchmarking tool presents APS schools in 15 groups of statistical peers, nine elementary, four middle, two high schools,

The report has 3 sections:

- Statistical Peers grouping tool
- Graphic displays of 2010 SBA results
- Source data for this report

plus alternative schools. Graphs in the second section display achieved percent proficient and a predicted achievement range for each school in math and reading on the New Mexico Standards Based Assessments.

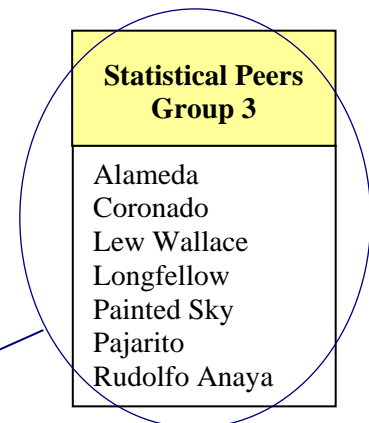
Predicted achievement ranges are 95% confidence intervals from OLS multiple regression. The graphs show only one moment in time (status), growth from year to year is not considered here. In other words, while a school may appear to have performed well or poorly, remarkable loss or gain in performance may be evident when a series of its achievement measures are examined. Predicted achievement ranges provide another way to consider NMSBA results thus adding information to annual NCLB reports. The third section contains source data used in this report.

Using Statistical Peers for Benchmarking

Consider each Statistical Peers group a distinct set of comparison schools. There probably will be situations for schools to compare themselves to schools in other peer groups. Statistical Peers are listed alphabetically within each group, not by any relative similarity to one another.

Consider each group a distinct set of comparison schools

Figure 1



2010

Statistical Peers for Benchmarking

2010

Statistical Peer Group 1

Adobe Acres
Alamosa
Armijo
Barcelona
East San Jose
Emerson
Eugene Field
Helen Cordero
La Luz
La Mesa
Los Padillas
Lowell
Mountain View
Navajo
Valle Vista
Wherry

Statistical Peer Group 2

Atrisco
Carlos Rey
Cochiti
Dolores Gonzales
Duranes
Edward Gonzales
Eubank
Hawthorne
Kirtland
Kit Carson
Lavaland
M. A. Binford
Reginald Chavez
Tomasita
Whittier

Statistical Peer Group 3

Alameda
Coronado
Lew Wallace
Longfellow
Painted Sky
Pajarito
Rudolfo Anaya

Statistical Peer Group 4

Bel-Air
Hodgin
Los Ranchos
MacArthur
Mark Twain
Mission Avenue
S. R. Marmon

Statistical Peer Group 5

Alvarado
Chaparral
Griegos
Manzano Mesa
Montezuma
Zia

Statistical Peer Group 6

Apache
Chelwood
E. G. Ross
Governor Bent
Matheson Park
McCollum

Statistical Peer Group 7

A. Montoya
Acoma
Arroyo Del Oso
Bellehaven
Collet Park
Comanche
Inez
Marie Hughes
Mitchell
Sierra Vista
Sombra del Monte
Sunset View
Zuni

Statistical Peer Group 8

Bandelier
Chamiza
Corrales
John Baker
Monte Vista
Oñate
Osuna
Petroglyph
Sandia Base
Seven Bar
Tierra Antigua
Ventana Ranch

Statistical Peer Group 9

Dennis Chavez
Double Eagle
Georgia O Keefe
H. Humphrey
North Star
S. Y. Jackson
San Antonito

Statistical Peer Group 10

Ernie Pyle
Harrison
Hayes
Polk
Truman
Van Buren
Washington

Statistical Peer Group 11

Garfield
Jimmy Carter
John Adams
Kennedy
McKinley
Taft
Wilson

Statistical Peer Group 12

Cleveland
Grant
Jackson
James Monroe
Jefferson
L. B. Johnson
Taylor
Tony Hillerman

Statistical Peer Group 13

Desert Ridge
Eisenhower
Hoover
Madison
Roosevelt

Statistical Peer Group 14

Albuquerque
Atrisco Heritage
Del Norte
Highland
Rio Grande
Valley
West Mesa

Statistical Peer Group 15

Cibola
Eldorado
La Cueva
Manzano
Sandia
Volcano Vista

Alternative Schools

Career Enrichment Ctr. 9-12
Desert Willow Fam. Sch. K-8
Early College Academy 9-10
Evening High School 9-12
Freedom High 10-12
Juvenile Detention Ctr.
New Futures 7-12
School on Wheels 9-12
Sierra Alternative 9-12
Vision Quest 6-8



These Statistical Peer Groups are comprised of schools with most similar proportions of students in the five NCLB subgroups and student mobility during school year 2009-10.



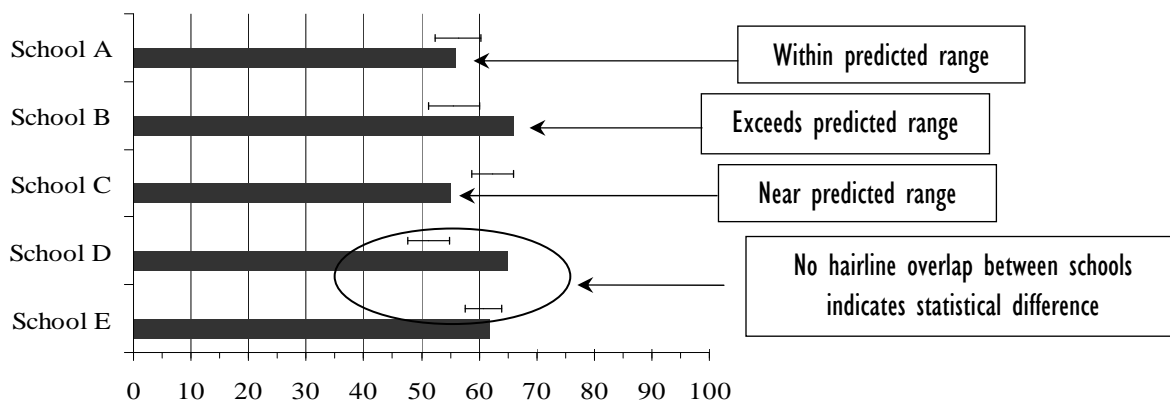
Comparison of Achieved Percent Proficient and Predicted Achievement Range

The following section graphically displays results from ordinary least squares regression (OLS) that considers proportions students in the NCLB subgroups FRL, ELL, non-gifted special education, non-Anglo, and student mobility to estimate school math and reading performance on the 2010 NMSBA (see Table 2). Three analyses were run, one for each school level, elementary, middle and high school.

The horizontal bars show percentages of students enrolled the full academic year (FAY) who scored proficient or advanced on the NMSBA (Figure 2). Hairlines reflect 95% confidence intervals (CI) estimated when using the demographic variables listed above to predict math and reading performances. The graphs with the predicted achievement ranges provide another way to consider NMSBA results. School performance is statistically different when there is no overlap of confidence intervals among schools compared. Note, there is no CI overlap of schools C and E compared with school D, thus performances of schools C and E are statistically different from the performance of school D.

Results from the OLS regression analyses are organized by Statistical Peer Groups to facilitate comparisons among traditional APS schools. The intention for presenting schools this way is to support collaboration among schools and the sharing of best practices. By identifying schools that performed beyond what is predicted based on student demographics, given District performance on the 2010 APS NMSBA, collaboration with staff from the schools exceeding prediction could reveal strategies that may be useful for other peer schools.

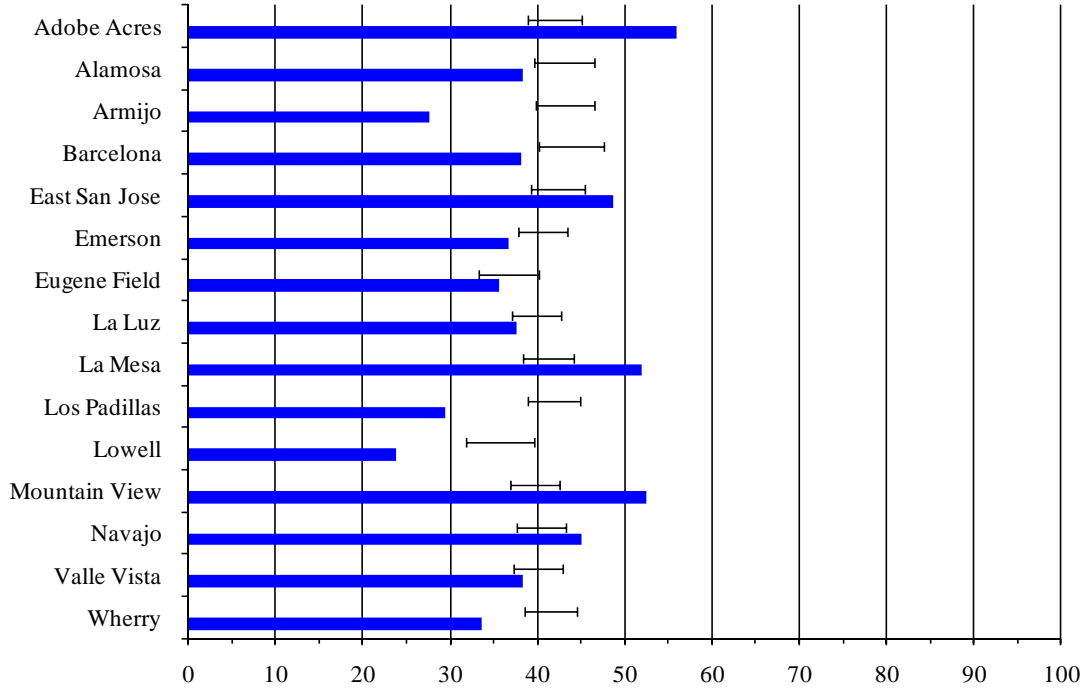
Figure 2



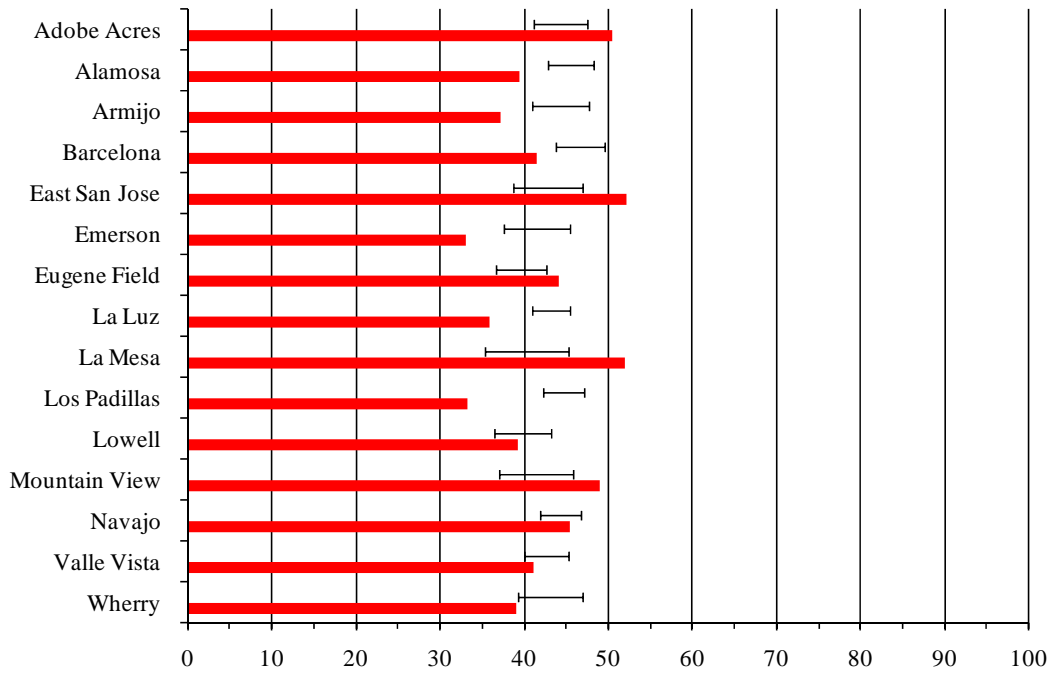
Comparison of Achieved Percent Proficient with Predicted Achievement Range

Statistical Peers Group 1 NM Standards Based Assessment Spring 2010

Math Percent Proficient 2010



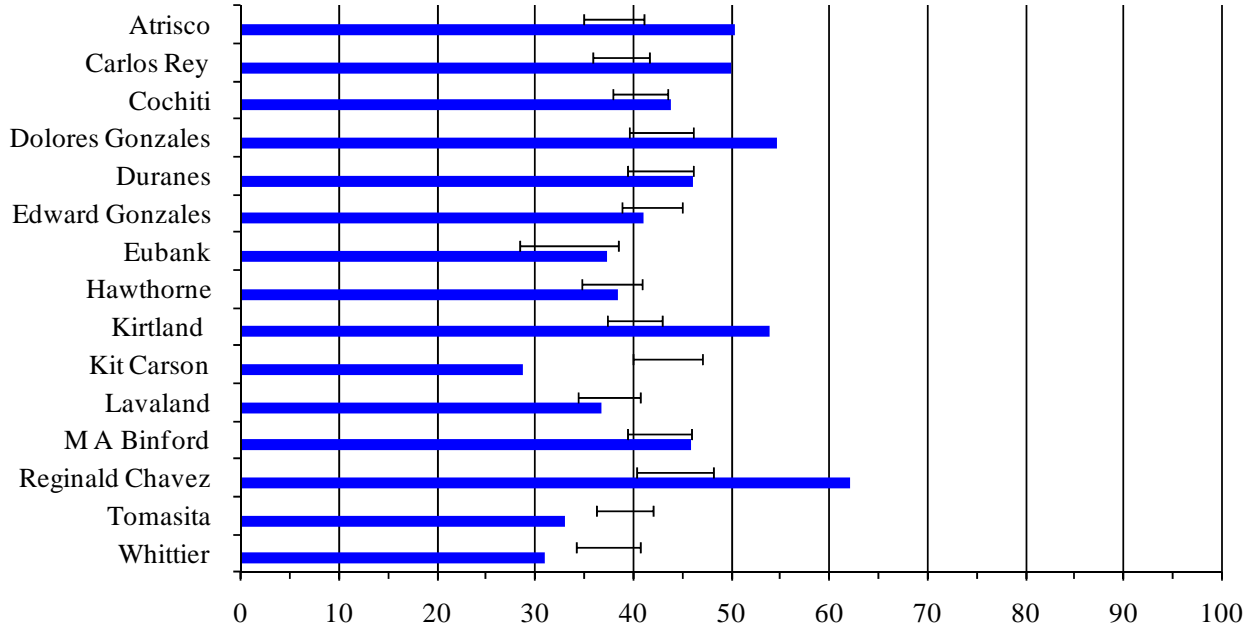
Reading Percent Proficient 2010



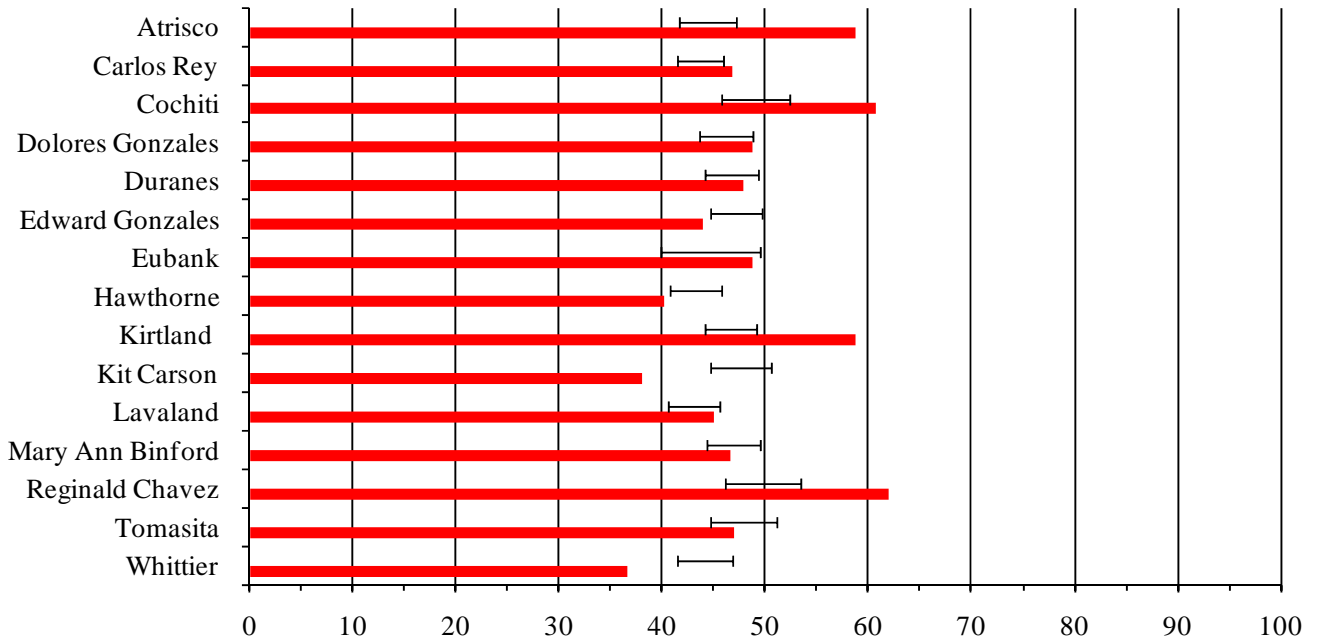
Comparison of Achieved Percent Proficient with Predicted Achievement Range

Statistical Peers Group 2 NM Standards Based Assessment Spring 2010

Math Percent Proficient 2010



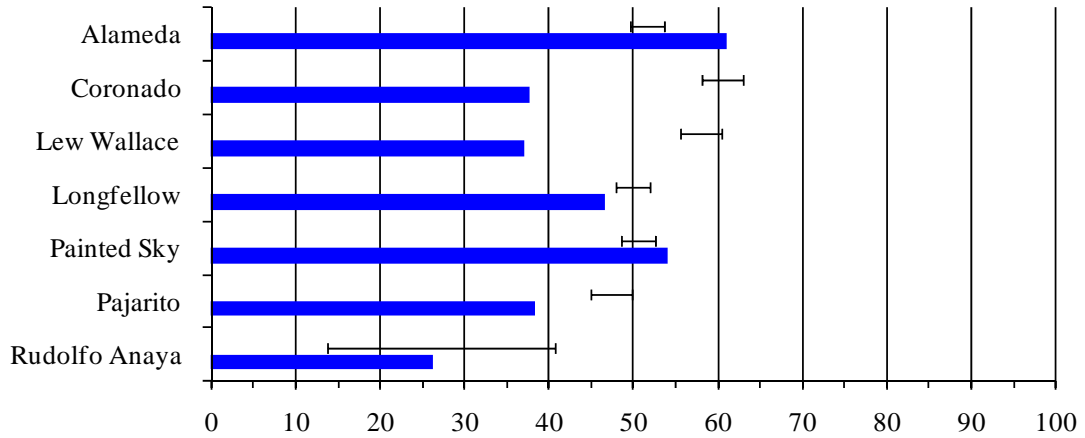
Reading Percent Proficient 2010



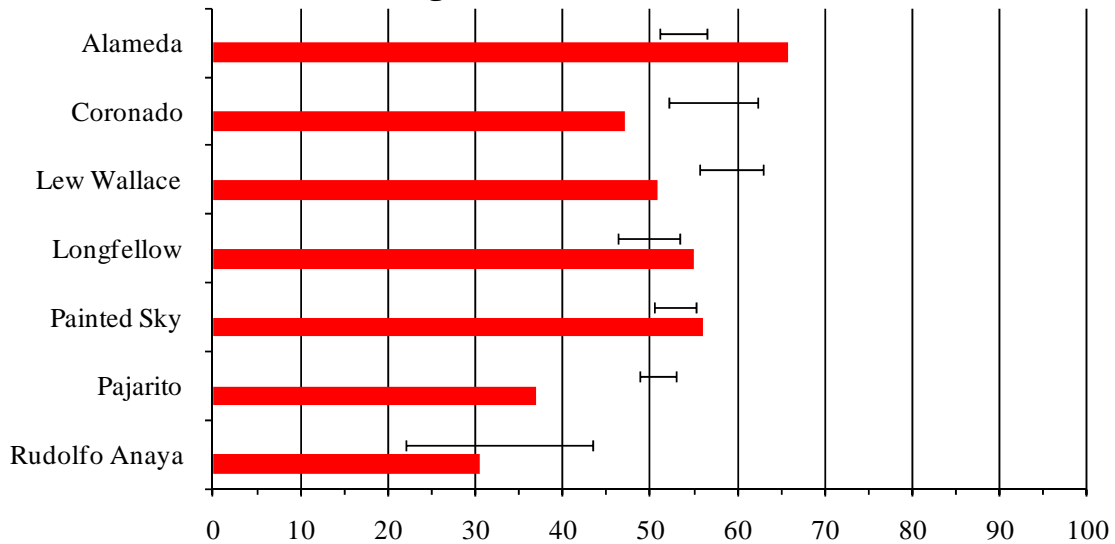
Comparison of Achieved Percent Proficient with Predicted Achievement Range

Statistical Peers Group 3 NM Standards Based Assessment Spring 2010

Math Percent Proficient 2010



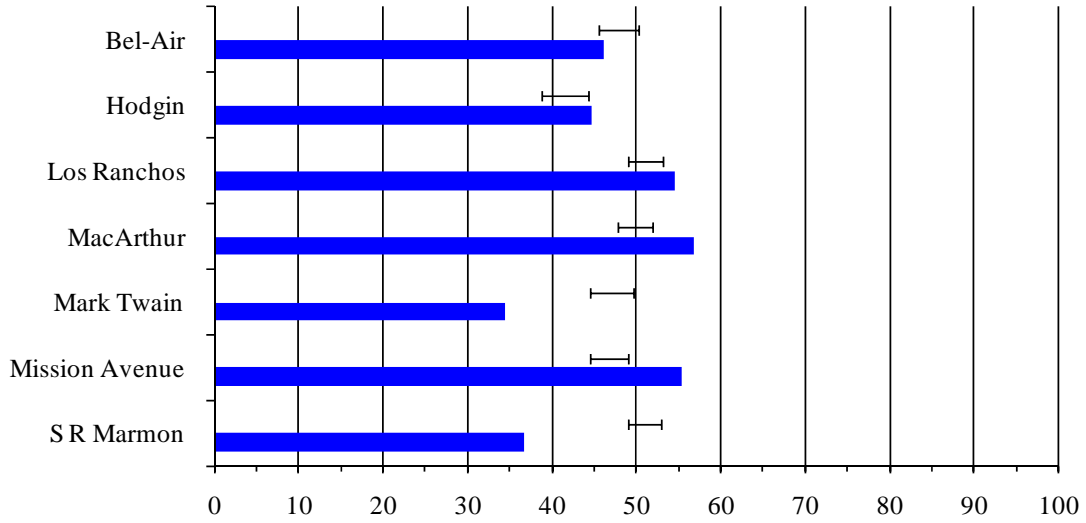
Reading Percent Proficient 2010



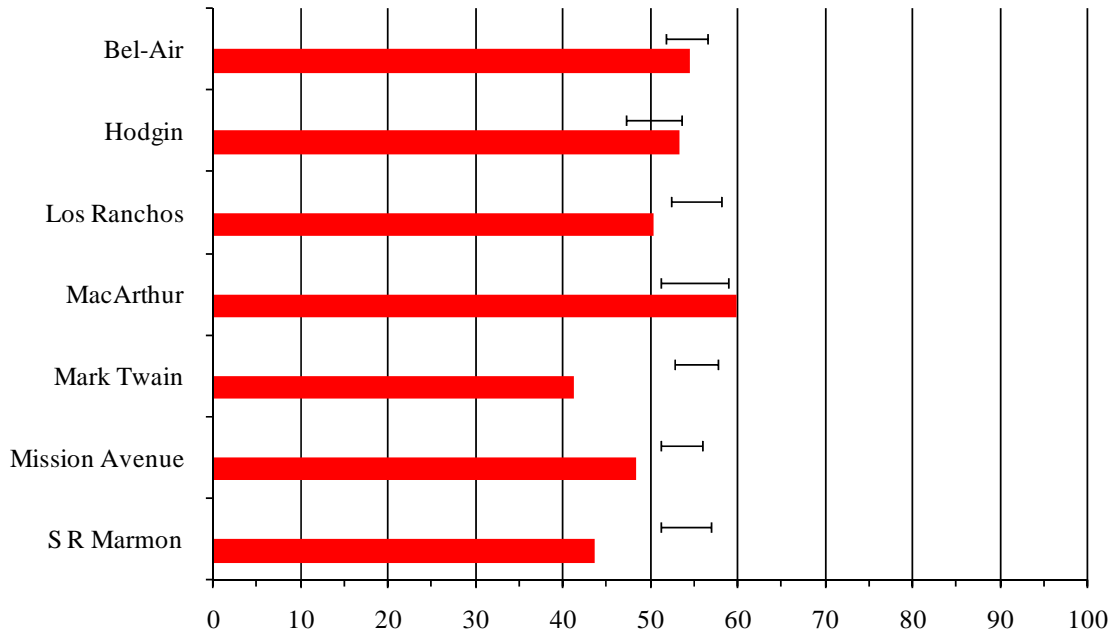
Comparison of Achieved Percent Proficient with Predicted Achievement Range

Statistical Peers Group 4 NM Standards Based Assessment Spring 2010

Math Percent Proficient 2010



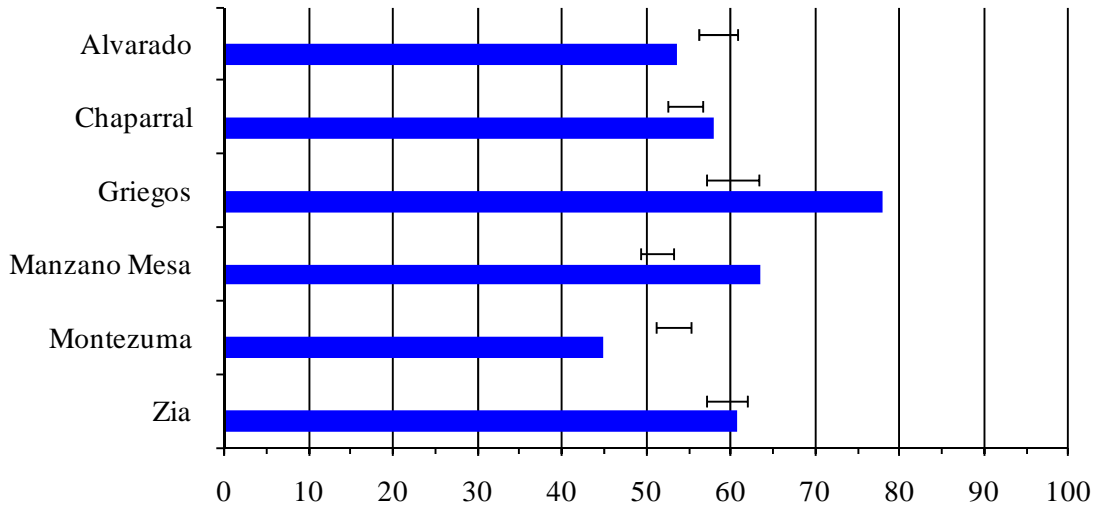
Reading Percent Proficient 2010



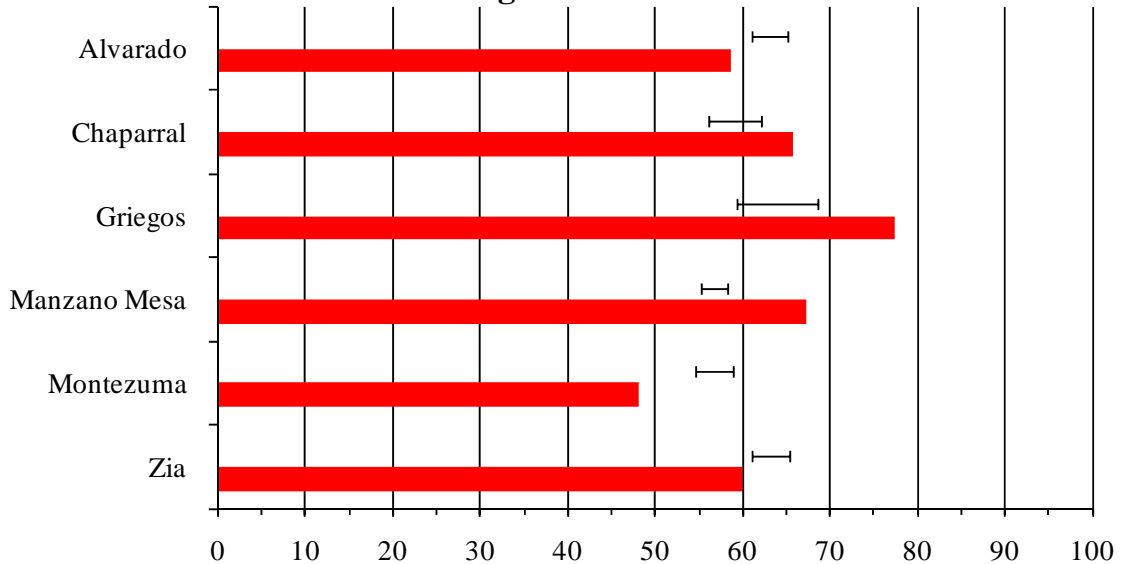
Comparison of Achieved Percent Proficient with Predicted Achievement Range

Statistical Peers Group 5 NM Standards Based Assessment Spring 2010

Math Percent Proficient 2010



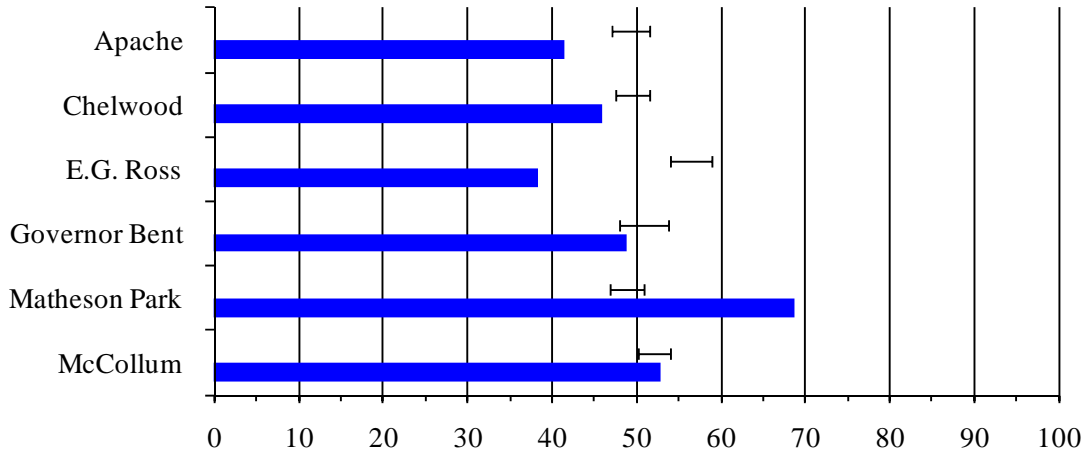
Reading Percent Proficient 2010



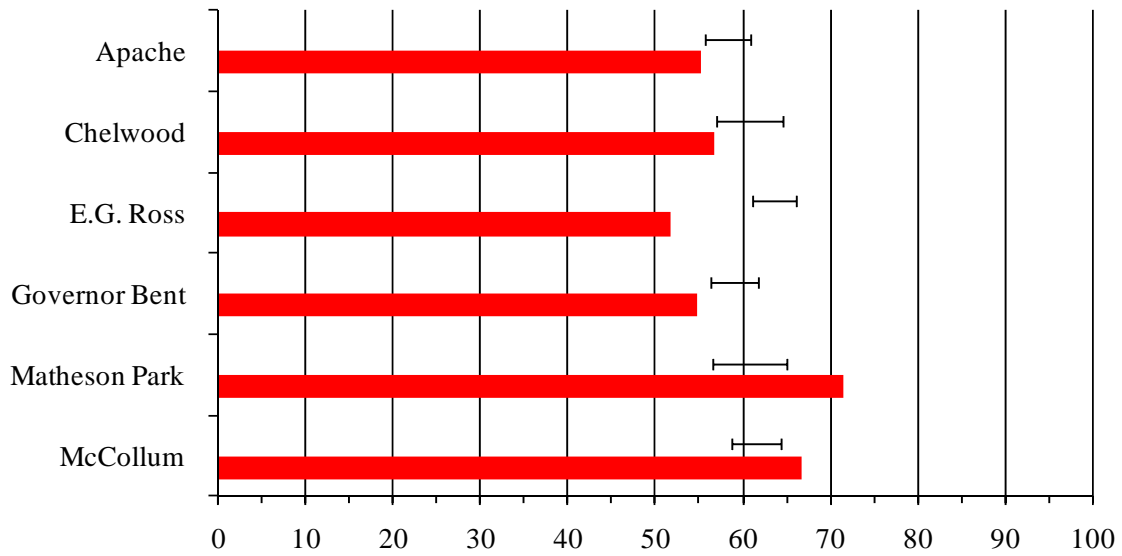
Comparison of Achieved Percent Proficient with Predicted Achievement Range

Statistical Peers Group 6 NM Standards Based Assessment Spring 2010

Math Percent Proficient 2010



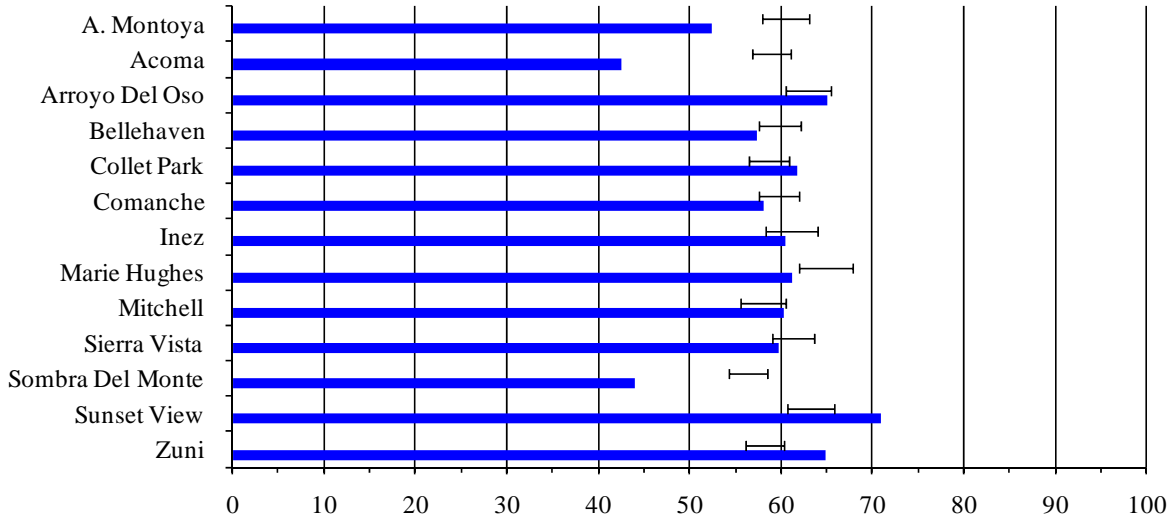
Reading Percent Proficient 2010



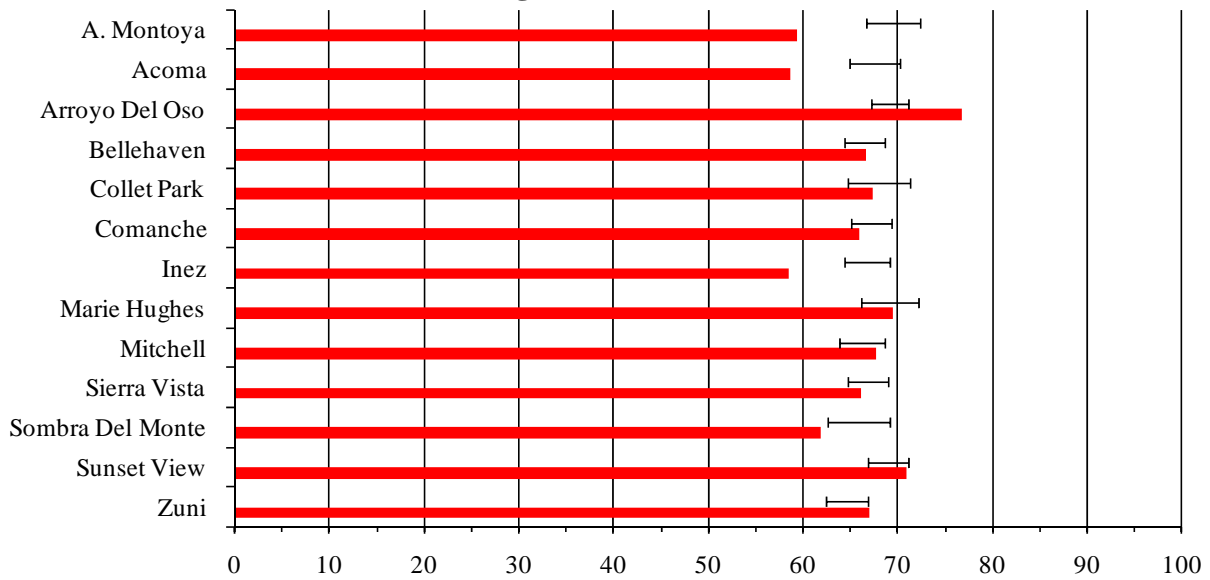
Comparison of Achieved Percent Proficient with Predicted Achievement Range

Statistical Peers Group 7 NM Standards Based Assessment Spring 2010

Math Percent Proficient 2010



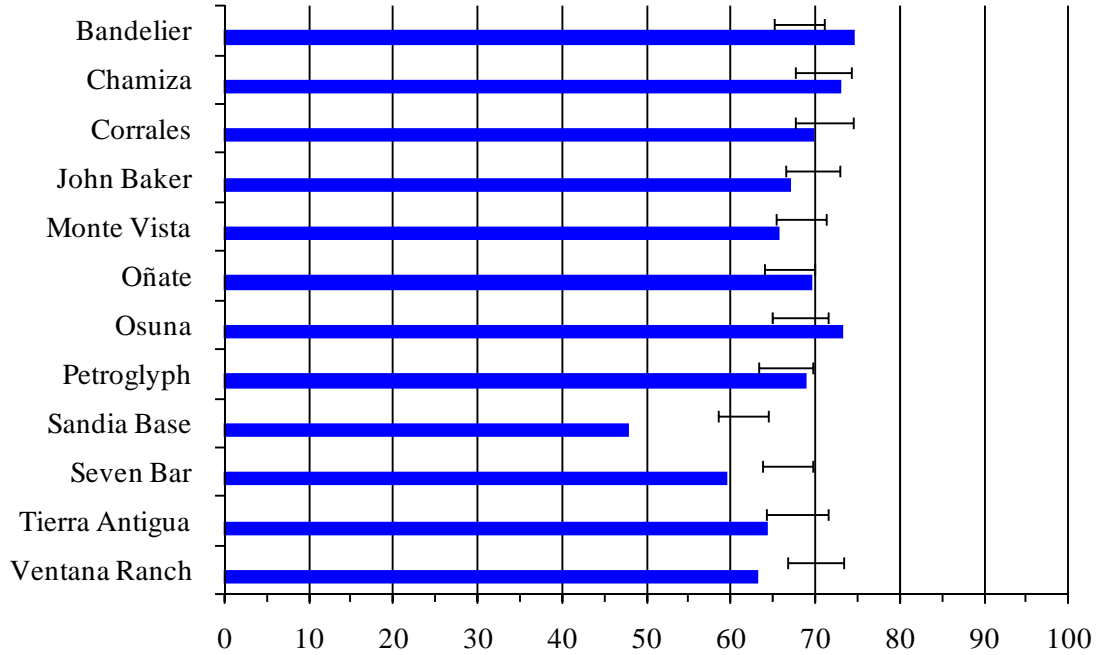
Reading Percent Proficient 2010



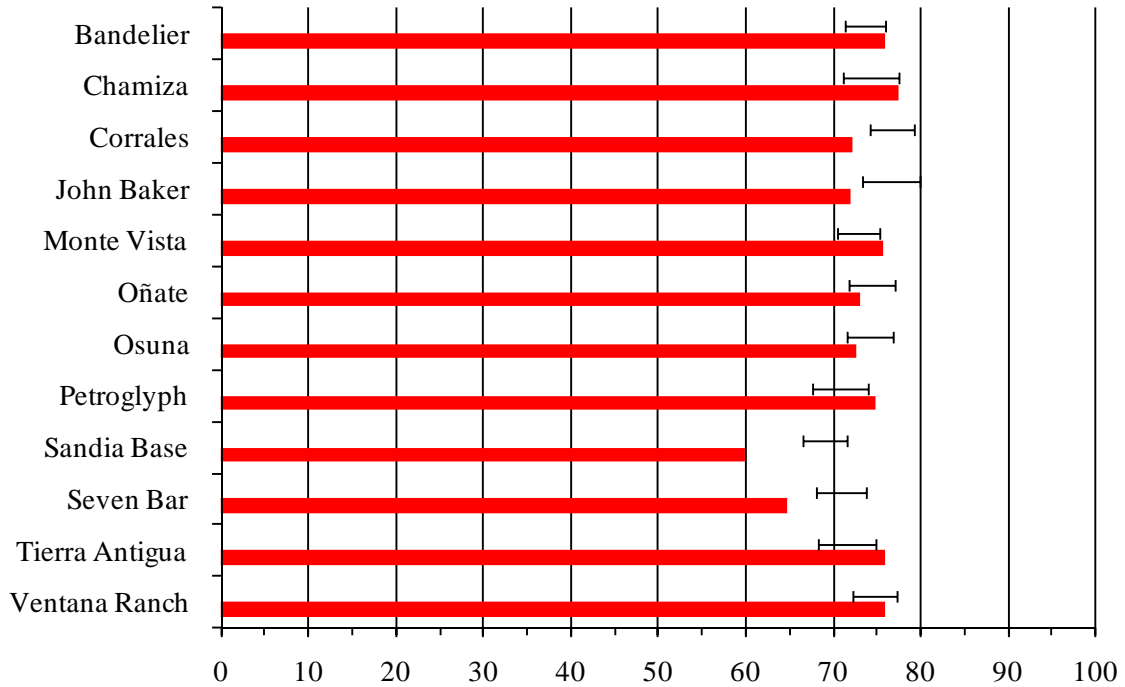
Comparison of Achieved Percent Proficient with Predicted Achievement Range

Statistical Peers Group 8 NM Standards Based Assessment Spring 2010

Math Percent Proficient 2010



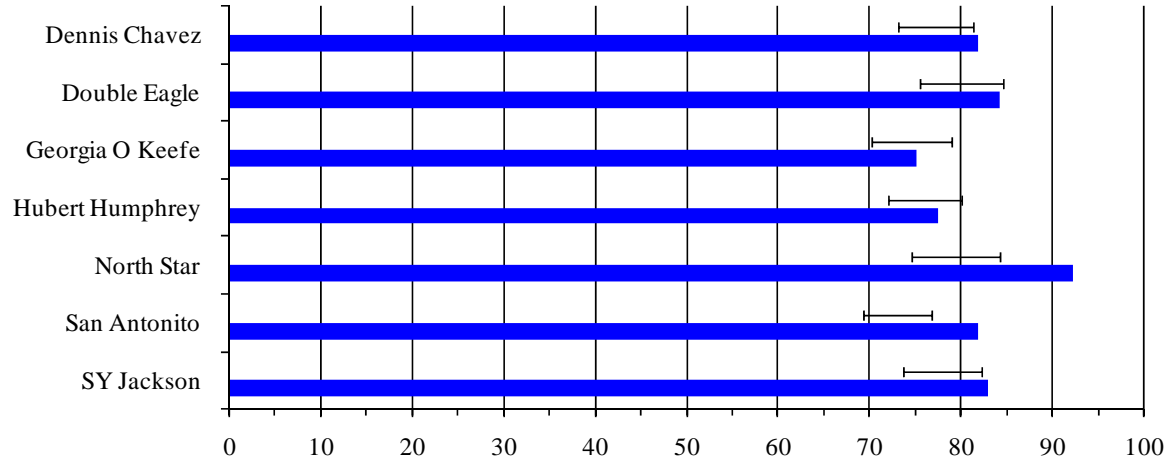
Reading Percent Proficient 2010



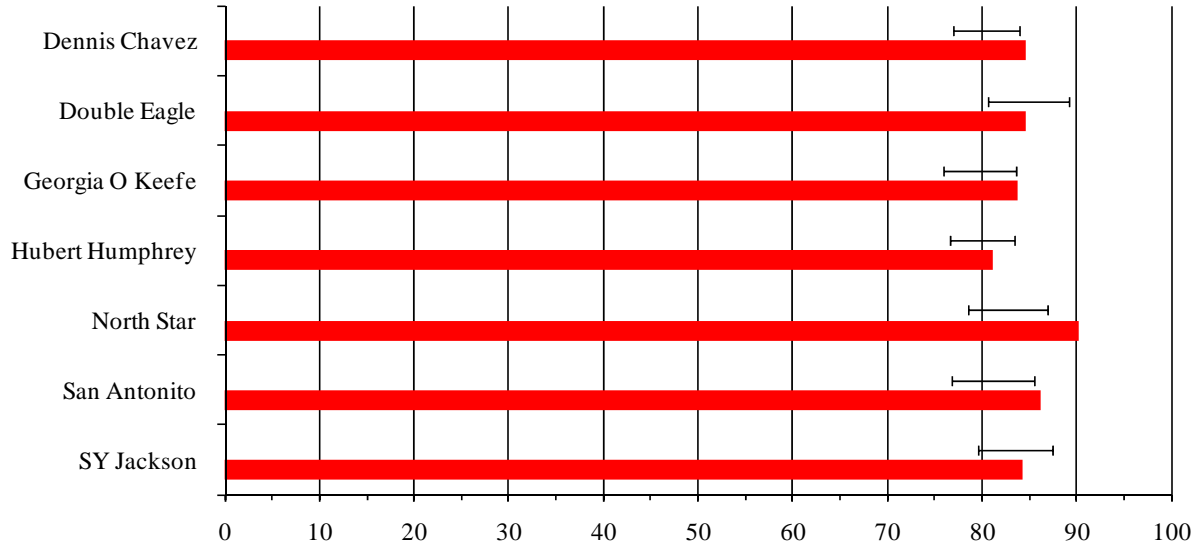
Comparison of Achieved Percent Proficient with Predicted Achievement Range

Statistical Peers Group 9 NM Standards Based Assessment Spring 2010

Math Percent Proficient 2010



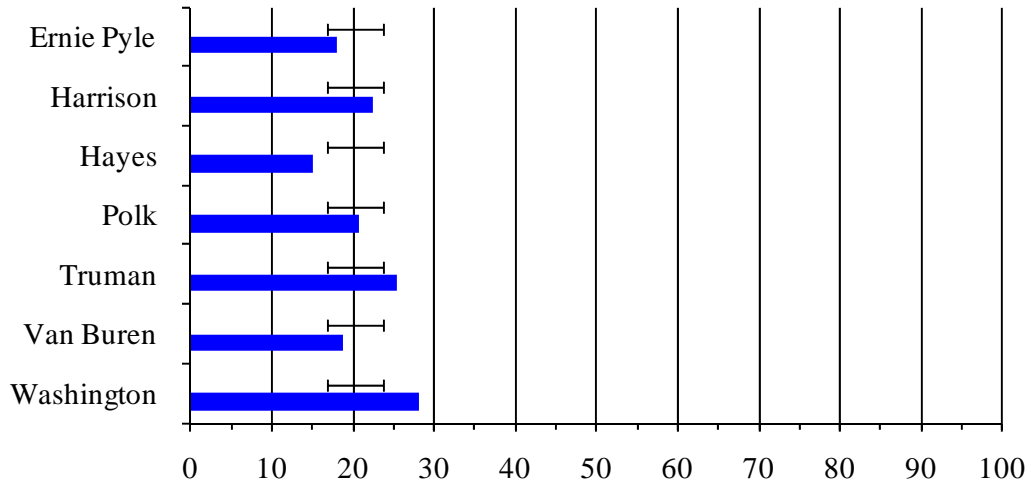
Reading Percent Proficient 2010



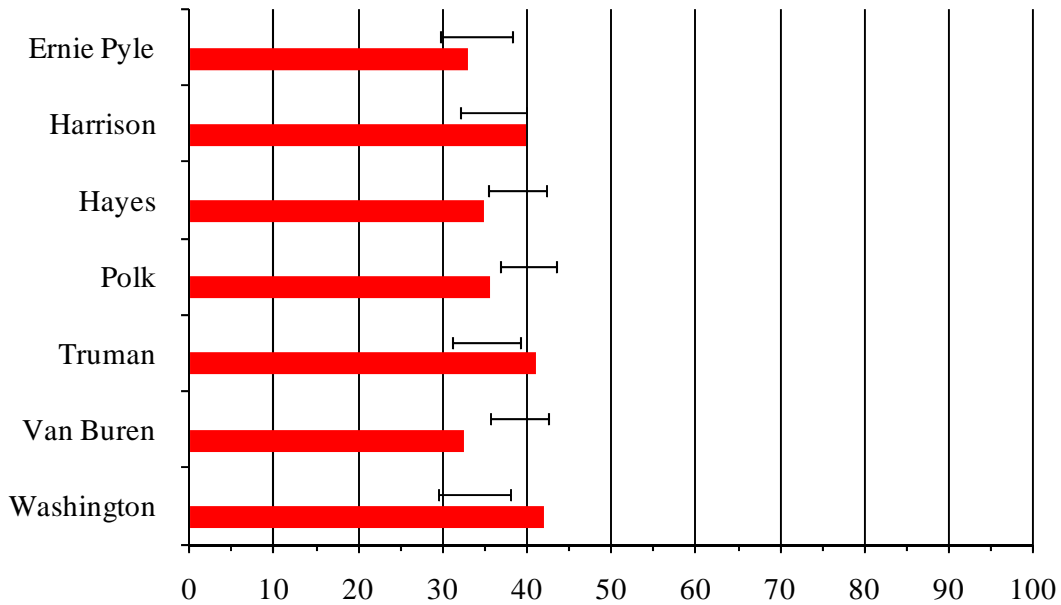
Comparison of Achieved Percent Proficient with Predicted Achievement Range

Statistical Peers Group 10 NM Standards Based Assessment Spring 2010

MathPercent Proficient 2010



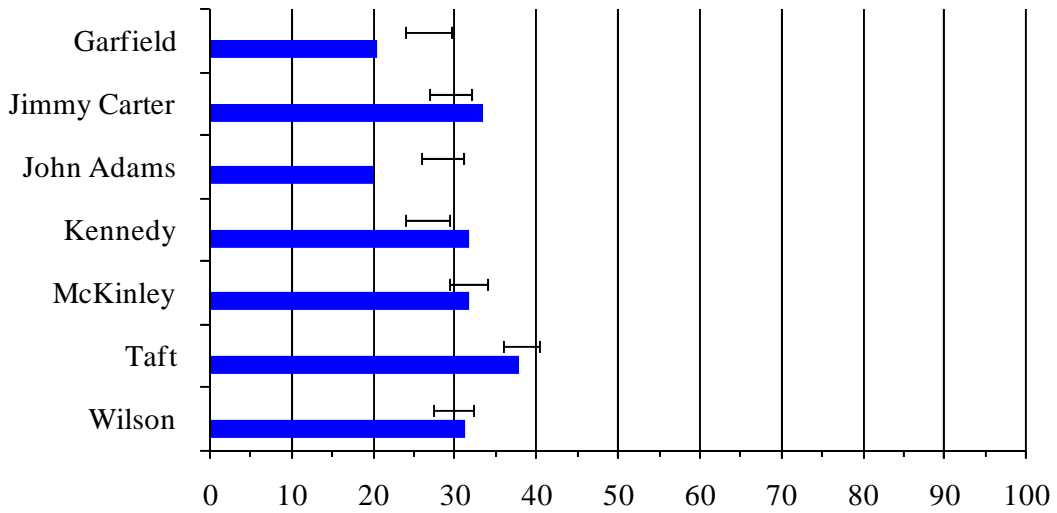
Reading Percent Proficient 2010



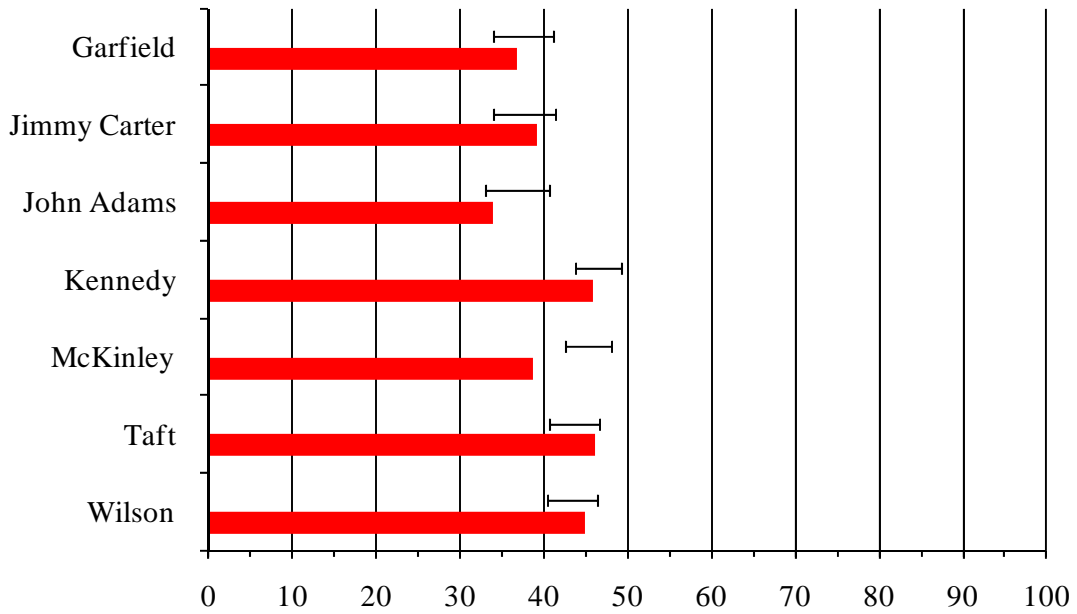
Comparison of Achieved Percent Proficient with Predicted Achievement Range

Statistical Peers Group 11 NM Standards Based Assessment Spring 2010

MathPercent Proficient 2010



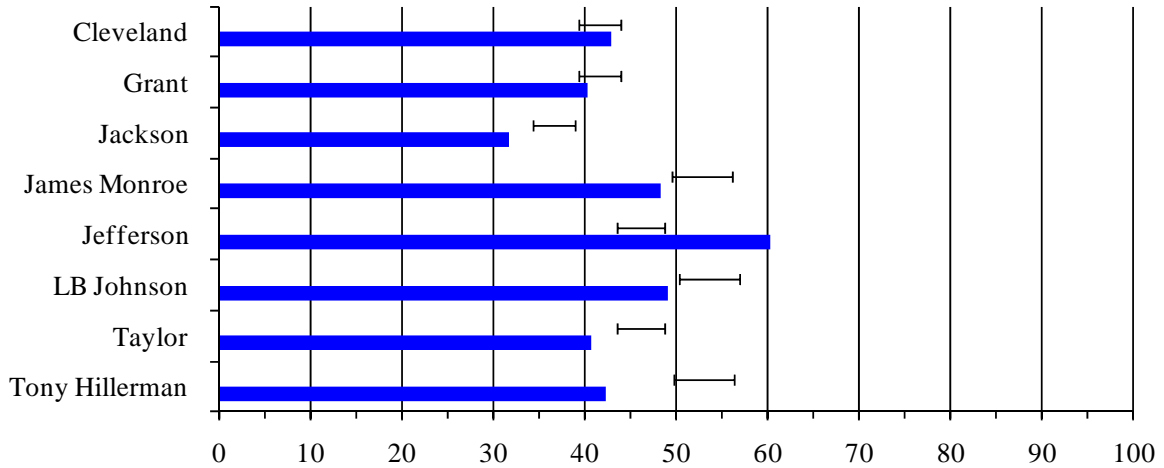
Reading Percent Proficient 2010



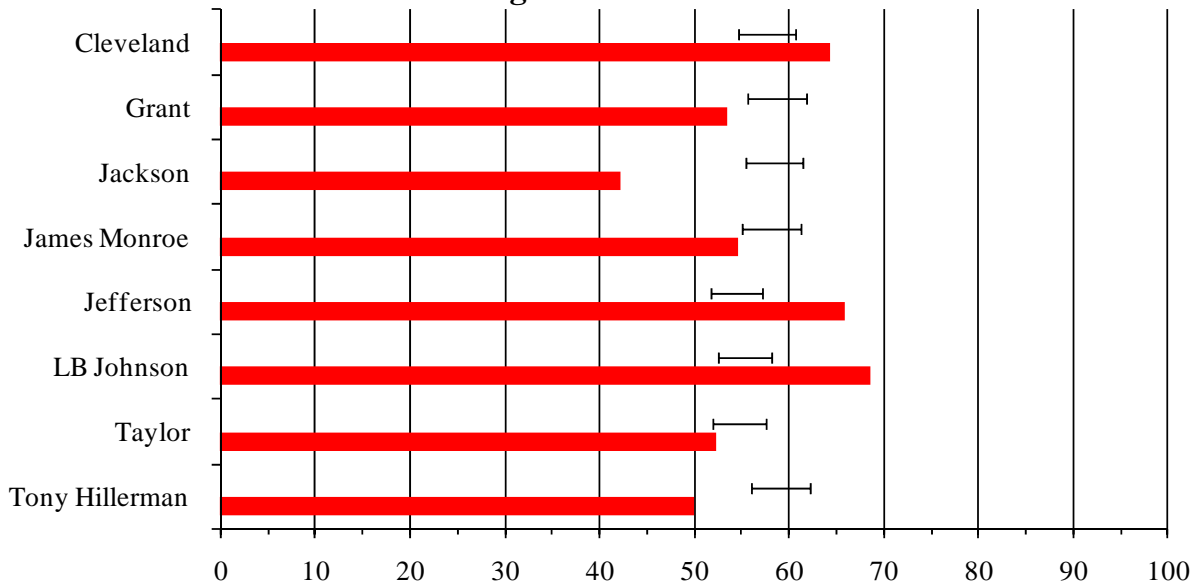
Comparison of Achieved Percent Proficient with Predicted Achievement Range

Statistical Peers Group 12 NM Standards Based Assessment Spring 2010

MathPercent Proficient 2010



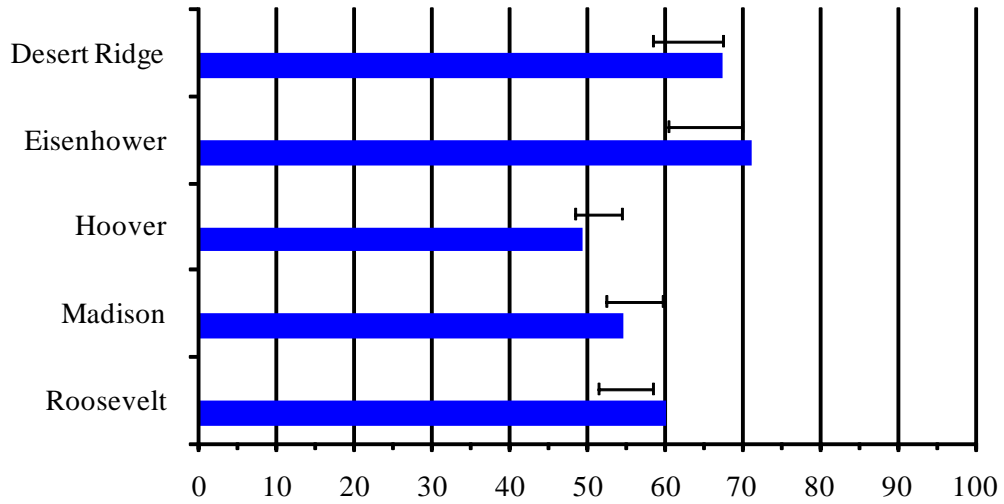
Reading Percent Proficient 2010



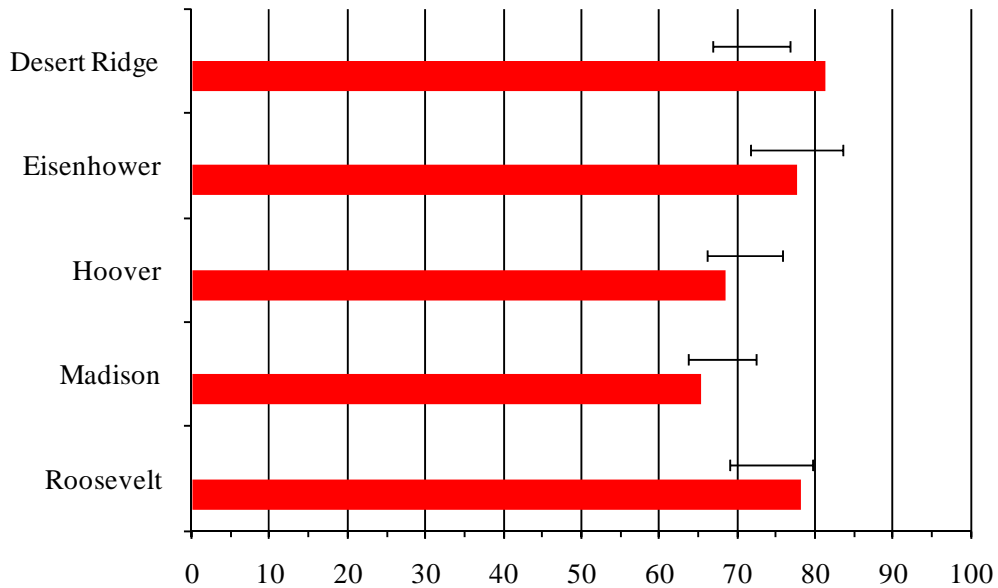
Comparison of Achieved Percent Proficient with Predicted Achievement Range

Statistical Peers Group 13 NM Standards Based Assessment Spring 2010

MathPercent Proficient 2010



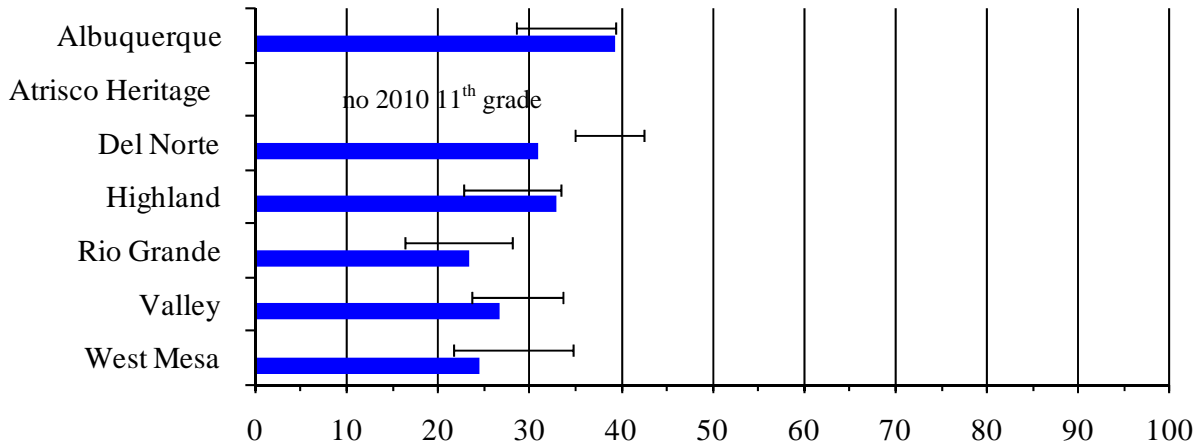
Reading Percent Proficient 2010



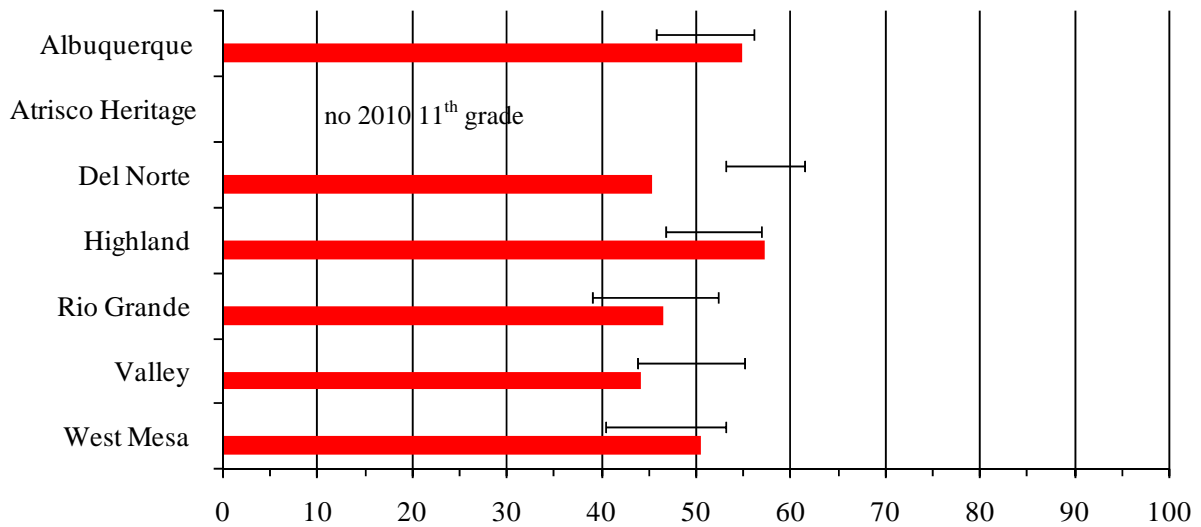
Comparison of Achieved Percent Proficient with Predicted Achievement Range

Statistical Peers Group 14 NM Standards Based Assessment Spring 2010

Math Percent Proficient 2010



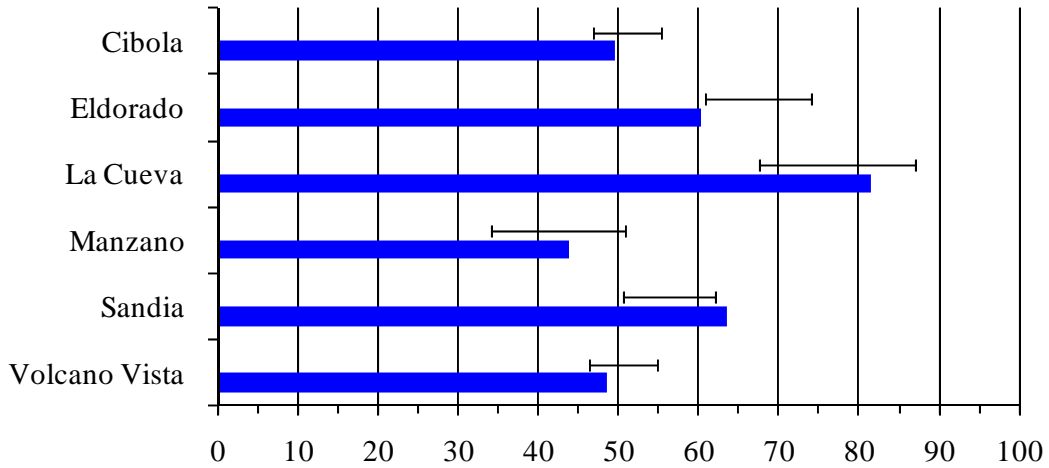
Reading Percent Proficient 2010



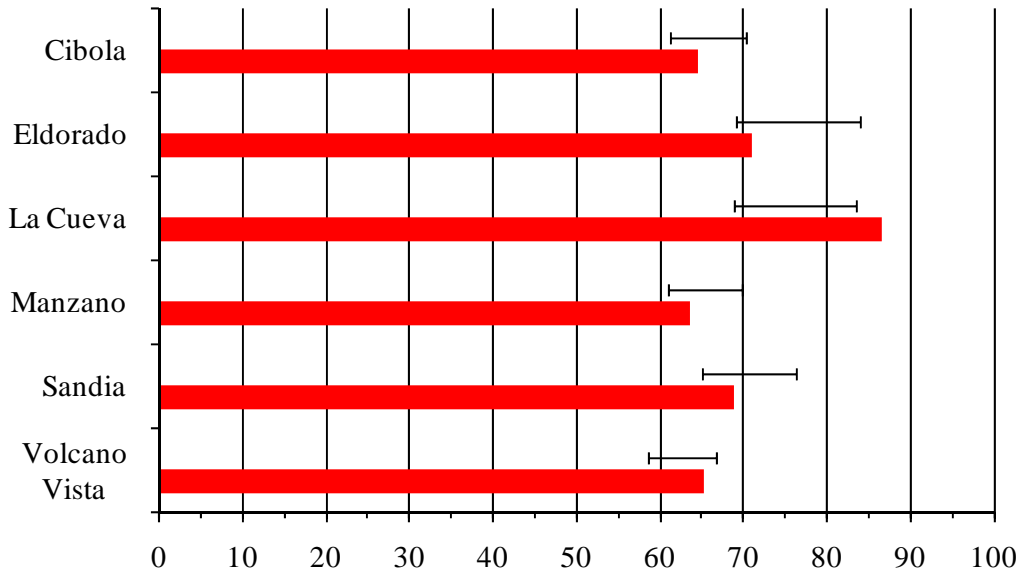
Comparison of Achieved Percent Proficient with Predicted Achievement Range

Statistical Peers Group 15 NM Standards Based Assessment Spring 2010

MathPercent Proficient 2010



Reading Percent Proficient 2010



Student Demographics by School 2009 - 2010

Table 1. Student Demographic Data 2009-2010

Stat Peers 2010	School	FRL ¹ percent	ELL ² percent	non-Anglo ³ percent	Special Education ⁴ percent	Mobility ⁵ percent
1	Adobe Acres	100	47.2	93.1	7.9	29.7
	Alamosa	100	41.5	96.7	9.2	22.5
	Armijo	99.6	48.5	96.6	13.5	23.0
	Barcelona	100	40.2	95.1	8.4	17.6
	East San Jose	100	54.8	95.0	12.0	27.5
	Emerson	100	54.3	94.9	7.6	38.3
	Eugene Field	100	42.9	99.3	10.3	63.2
	Helen Cordero	98.9	39.2	94.4	8.8	26.2
	La Luz	100	40.1	96.7	9.5	42.8
	La Mesa	100	62.0	97.7	8.7	34.0
	Los Padillas	100	39.2	97.5	14.5	30.5
	Lowell	100	44.1	92.4	12.7	69.1
	Mountain View	100	55.8	90.2	10.6	44.0
	Navajo	100	41.1	91.4	13.8	39.7
	Valle Vista	99.8	44.5	96.3	13.5	42.4
Wherry	100	52.5	92.0	14.6	32.6	
2	Atrisco	99.4	26.8	93.7	18.8	56.3
	Carlos Rey	100	35.9	92.3	7.5	50.6
	Cochiti	100	19.9	87.6	14.9	38.0
	Dolores Gonzales	100	37.1	95.6	8.1	24.8
	Duranes	100	34.5	95.2	19.3	25.0
	Edward Gonzales	100	29.8	93.8	10.7	30.2
	Eubank	99.8	23.8	75.0	11.9	84.0
	Hawthorne	100	37.1	89.9	13.6	55.8
	Kirtland	100	32.2	86.7	12.5	40.9
	Kit Carson	100	30.9	96.9	13.3	20.2
	Lavaland	100	32.9	93.6	5.7	57.7
	Mary Ann Binford	100	33.5	94.9	13.8	25.5
	Reginald Chavez	100	24.2	95.5	14.6	15.5
	Tomasita	100	25.5	80.8	11.4	47.9
Whittier	99.8	32.0	87.4	10.3	59.1	
3	Alameda	74.8	26.5	88.1	8.1	31.7
	Coronado	57.5	34.4	89.4	5.0	19.2
	Lew Wallace	63.8	20.1	85.0	9.9	18.7
	Longfellow	77.2	34.9	95.2	12.5	36.8
	Painted Sky	77.3	27.7	88.3	6.4	32.4
	Pajarito	86.9	30.3	88.8	14.7	28.7
	Rudolfo Anaya	79.5	35.3	89.6	10.6	173.3

¹ FRL: student eligibility for free or reduced priced lunch, a proxy measure for economic challenge

² ELL: English language learners

³ non-Anglo: cultural/ethnic Hispanic/Latino, Native American, African American, Asian American

⁴ Special Education: eligible students excluding Gifted Education

⁵ Mobility: number of students who either enrolled or withdrew divided by total school enrollment

Student Demographics by School 2009 - 2010

Stat Peers 2010	School	FRL ¹ percent	ELL ² percent	non-Anglo ³ percent	Special Education ⁴ percent	Mobility ⁵ percent
4	Bel-Air	76.6	16.8	79.0	16.0	51.1
	Hodgin	90.8	16.0	82.4	16.2	54.9
	Los Ranchos	71.9	17.6	84.1	16.8	42.6
	MacArthur	78.7	12.1	88.7	23.4	33.7
	Mark Twain	77.4	14.5	72.4	24.9	54.1
	Mission Avenue	81.2	16.7	80.2	19.8	46.5
	Susie Rayos Marmon	72.8	22.1	86.6	17.0	40.8
5	Alvarado	61.7	13.3	70.9	11.9	21.6
	Chaparral	64.0	12.4	77.9	15.1	40.4
	Griegos	61.9	5.9	81.4	11.0	10.0
	Manzano Mesa	72.4	21.4	72.8	12.1	40.4
	Montezuma	66.4	28.1	71.5	17.4	42.8
	Zia	59.3	21.7	65.1	21.7	21.0
6	Apache	73.7	12.0	65.2	16.6	49.0
	Chelwood	77.7	5.4	61.5	12.8	38.0
	E.G. Ross	67.7	9.0	67.1	13.7	19.2
	Governor Bent	66.5	9.7	66.5	13.0	56.7
	Matheson Park	77.2	7.6	56.2	11.6	43.1
	McCollum	71.1	6.8	63.3	26.6	38.3
7	A. Montoya	48.8	3.5	45.6	17.1	41.0
	Acoma	58.4	5.6	53.7	15.0	26.5
	Arroyo Del Oso	48.4	7.0	55.5	15.7	25.9
	Bellehaven	58.3	9.0	60.5	12.9	21.3
	Collet Park	60.0	6.9	49.6	19.0	24.6
	Comanche	54.1	9.1	53.2	13.0	32.3
	Inez	58.3	9.6	63.8	18.1	12.8
	Marie Hughes	48.3	5.5	65.5	10.5	14.1
	Mitchell	53.7	8.4	51.8	13.0	43.6
	Sierra Vista	52.6	7.4	62.4	11.5	26.6
	Sombra Del Monte	65.3	9.0	52.9	16.3	25.4
	Sunset View	45.1	5.9	56.8	9.8	32.7
Zuni	56.8	6.9	65.0	10.2	34.7	

¹ FRL: student eligibility for free or reduced priced lunch, a proxy measure for economic challenge

² ELL: English language learners

³ non-Anglo: cultural/ethnic Hispanic/Latino, Native American, African American, Asian American

⁴ Special Education: eligible students excluding Gifted Education

⁵ Mobility: number of students who either enrolled or withdrew divided by total school enrollment

Student Demographics by School 2009 - 2010

Stat Peers 2010	School	FRL ¹ percent	ELL ² percent	non-Anglo ³ percent	Special Education ⁴ percent	Mobility ⁵ percent
8	Bandelier	38.3	4.8	48.0	11.5	19.8
	Chamiza	30.7	3.5	54.9	13.1	19.7
	Corrales	29.4	1.1	43.0	13.3	22.7
	John Baker	35.2	5.0	37.0	12.7	16.9
	Monte Vista	35.8	8.0	48.8	10.9	24.2
	Oñate	36.0	2.2	40.4	15.0	32.1
	Osuna	32.2	5.0	42.3	13.8	33.5
	Petroglyph	34.7	3.6	56.6	15.2	37.8
	Sandia Base	44.5	6.4	47.6	11.7	44.9
	Seven Bar	36.7	5.1	57.5	12.1	31.4
	Tierra Antigua	30.0	6.0	53.1	8.0	41.1
	Ventana Ranch	33.8	3.9	49.2	10.5	18.1
9	Dennis Chavez	17.8	3.9	39.9	12.8	12.5
	Double Eagle	8.5	1.6	24.2	12.7	18.0
	Georgia O Keefe	15.3	3.7	30.7	8.5	35.5
	Hubert Humphrey	18.5	4.8	36.1	10.9	18.6
	North Star	6.2	2.3	31.2	9.4	27.9
	San Antonito	22.1	1.3	22.4	12.0	28.3
	SY Jackson	18.0	1.9	28.2	17.0	7.2
10	Ernie Pyle	100	28.4	96.6	11.9	27.4
	Harrison	100	29.3	93.6	14.9	26.0
	Hayes	100	35.9	89.1	21.1	30.1
	Polk	100	25.3	87.1	19.0	32.8
	Truman	99.9	25.1	94.7	17.6	24.0
	Van Buren	100	37.8	88.8	13.7	31.1
	Washington	100	31.2	96.9	14.5	26.7
11	Garfield	87.4	21.2	91.1	18.0	24.7
	Jimmy Carter	81.8	20.9	90.9	12.7	30.3
	John Adams	83.9	17.6	92.3	11.4	27.3
	Kennedy	87.4	12.6	77.6	18.5	42.2
	McKinley	77.6	12.0	79.3	17.7	64.6
	Taft	65.1	8.4	81.7	17.0	21.9
	Wilson	81.2	22.9	82.4	16.7	36.7
12	Cleveland	58.0	3.0	60.3	13.0	23.2
	Grant	58.1	4.7	58.7	17.2	36.5
	Jackson	67.8	7.7	59.2	16.4	26.3
	James Monroe	36.3	3.7	59.7	11.1	19.2
	Jefferson	49.1	5.0	65.2	12.0	14.4
	LB Johnson	34.8	2.7	63.9	13.4	11.2
	Taylor	49.1	5.9	64.8	19.4	19.0
	Tony Hillerman	35.8	2.5	58.3	11.4	12.7

¹ FRL: student eligibility for free or reduced priced lunch, a proxy measure for economic challenge

² ELL: English language learners

³ non-Anglo: cultural/ethnic Hispanic/Latino, Native American, African American, Asian American

⁴ Special Education: eligible students excluding Gifted Education

⁵ Mobility: number of students who either enrolled or withdrew divided by total school enrollment

Student Demographics by School 2009 - 2010

Stat Peers 2010	School	FRL ¹ percent	ELL ² percent	non-Anglo ³ percent	Special Education ⁴ percent	Mobility ⁵ percent
13	Desert Ridge	16.7	2.3	38.9	10.4	13.7
	Eisenhower	12.3	2.0	30.0	9.4	10.2
	Hoover	39.1	2.5	40.3	15.0	31.0
	Madison	30.0	3.2	44.6	14.6	16.0
	Roosevelt	32.1	.8	35.0	19.3	13.2
14	Albuquerque	55.7	15.4	83.1	12.8	26.6
	Atrisco Heritage Academy	81.5	15.6	92.0	12.2	23.4
	Del Norte	46.2	9.6	70.7	14.1	32.0
	Highland	58.3	23.5	81.4	16.0	32.5
	Rio Grande	67.8	23.5	93.3	15.4	31.1
	Valley	41.7	8.4	86.0	14.4	20.5
	West Mesa	66.5	18.1	91.3	13.1	32.2
15	Cibola	23.8	2.1	54.1	13.0	23.9
	Eldorado	15.1	1.6	33.0	11.4	20.4
	La Cueva	8.8	1.2	33.7	6.7	14.8
	Manzano	46.1	5.3	54.8	16.7	22.7
	Sandia	23.1	2.4	44.7	13.3	17.7
	Volcano Vista	22.6	2.0	60.0	11.6	20.0
16	Desert Willow Family Sch	4.2	.8	29.4	5.5	36.2
	Early College Academy	22.6	3.2	56.5	4.0	6.1
	Evening High School	10.4	16.7	84.2	15.6	87.2
	Freedom	100	10.3	70.1	4.0	111.2
	Juvenile Detention Center	8.1	16.1	80.6	27.4	no data
	New Futures	99.6	24.0	88.8	15.6	102.6
	School On Wheels	62.0	12.0	92.0	12.7	109.8
	Sierra Alternative	100	4.7	67.2	25.8	231.9
Vision Quest	95.0	25.0	95.0	0.0	no data	

¹ FRL: student eligibility for free or reduced priced lunch, a proxy measure for economic challenge

² ELL: English language learners

³ non-Anglo: cultural/ethnic Hispanic/Latino, Native American, African American, Asian American

⁴ Special Education: eligible students excluding Gifted Education

⁵ Mobility: number of students who either enrolled or withdrew divided by total school enrollment

Table 2. NMSBA Performance & Predicted Proficiency Ranges for Math and Reading – 2010

		Math			Reading		
Stat-Peers 2010	School	Percent Proficient	Predicted Range Lower Limit	Predicted Range Upper Limit	Percent Proficient	Predicted Range Lower Limit	Predicted Range Upper Limit
1	Adobe Acres	55.9	38.9	45.0	50.5	41.1	47.4
	Alamosa	38.3	39.7	46.5	39.4	42.7	48.3
	Armijo	27.6	39.8	46.5	37.2	40.9	47.6
	Barcelona	38.1	40.2	47.6	41.6	43.7	49.6
	East San Jose	48.6	39.2	45.5	52.2	38.7	46.9
	Emerson	36.7	37.8	43.4	33.1	37.6	45.4
	Eugene Field	35.7	33.2	40.1	44.1	36.6	42.6
	La Luz	37.6	37.1	42.7	35.9	40.8	45.4
	La Mesa	52.0	38.4	44.2	52.0	35.3	45.2
	Los Padillas	29.5	38.8	44.9	33.3	42.3	47.2
	Lowell	23.9	31.9	39.5	39.2	36.5	43.2
	Mountain View	52.5	36.9	42.5	49.0	36.9	45.8
	Navajo	45.0	37.6	43.2	45.4	41.8	46.8
	Valle Vista	38.3	37.2	42.8	41.1	39.9	45.2
Wherry	33.7	38.5	44.5	39.1	39.2	47.0	
2	Atrisco	50.4	34.9	41.0	58.8	41.6	47.2
	Carlos Rey	50.0	35.7	41.5	46.7	41.4	45.9
	Cochiti	43.9	37.8	43.5	60.8	45.7	52.3
	Dolores Gonzales	54.6	39.5	46.0	48.7	43.6	48.7
	Duranes	46.2	39.4	46.0	47.9	44.2	49.3
	Edward Gonzales	41.0	38.8	44.9	43.9	44.6	49.7
	Eubank	37.4	28.5	38.3	48.8	39.8	49.5
	Hawthorne	38.5	34.7	40.9	40.1	40.7	45.8
	Kirtland	54.0	37.4	43.0	58.7	44.1	49.0
	Kit Carson	28.8	39.9	47.0	38.1	44.7	50.6
	Lavaland	36.7	34.3	40.7	45.0	40.6	45.5
	Mary Ann Binford	45.8	39.4	45.9	46.7	44.3	49.4
	Reginald Chavez	62.0	40.4	48.1	62.0	46.1	53.3
	Tomasita	33.1	36.2	41.9	47.0	44.7	51.1
Whittier	30.9	34.1	40.6	36.7	41.5	46.9	

Predicted ranges are lower and upper bounds of OLS regression 95% confidence intervals.

Proficient and Advanced of Total Students group identified FAY (full academic year) by NM Public Education Department Significant predictors from percents of FRL, ELL, Special Education, Mobility were used in the OLS regression that produced the 95% confidence intervals of predicted performance.

		Math			Reading		
Stat-Peers 2010	School	Percent Proficient	Predicted Range Lower Limit	Predicted Range Upper Limit	Percent Proficient	Predicted Range Lower Limit	Predicted Range Upper Limit
3	Alameda	61.0	49.6	53.6	65.9	51.0	56.4
	Coronado	37.7	58.0	62.9	47.2	52.1	62.3
	Lew Wallace	37.0	55.6	60.5	50.7	55.7	62.9
	Longfellow	46.6	47.9	51.8	55.1	46.3	53.3
	Painted Sky	54.0	48.5	52.5	56.1	50.4	55.3
	Pajarito	38.3	44.9	49.8	37.0	48.8	52.8
	Rudolfo Anaya	26.2	13.7	40.7	30.5	21.9	43.5
4	Bel-Air	46.2	45.4	50.2	54.5	51.8	56.6
	Hodgin	44.7	38.8	44.3	53.4	47.1	53.5
	Los Ranchos	54.6	49.0	53.0	50.4	52.3	58.1
	MacArthur	56.9	47.7	51.8	59.8	51.2	58.9
	Mark Twain	34.5	44.4	49.6	41.2	52.7	57.7
	Mission Avenue	55.3	44.5	48.9	48.5	51.2	56.0
	Susie Rayos Marmon	36.6	49.0	52.9	43.5	51.1	56.8
5	Alvarado	53.6	56.1	60.7	58.6	60.9	65.2
	Chaparral	58.0	52.5	56.5	65.7	56.1	62.0
	Griegos	78.0	57.1	63.2	77.4	59.4	68.6
	Manzano Mesa	63.4	49.2	53.1	67.2	55.2	58.2
	Montezuma	44.8	51.1	55.2	48.1	54.5	58.8
	Zia	60.7	57.1	61.8	60.0	61.1	65.3
6	Apache	41.5	47.0	51.6	55.3	55.7	61.0
	Chelwood	46.0	47.5	51.4	56.8	56.9	64.6
	E.G. Ross	38.4	54.0	58.9	51.7	61.0	66.2
	Governor Bent	48.8	48.0	53.8	54.9	56.3	61.7
	Matheson Park	68.8	46.8	50.9	71.6	56.6	65.0
	McCollum	52.8	50.1	54.0	66.7	58.6	64.4

Predicted ranges are lower and upper bounds of OLS regression 95% confidence intervals. Proficient and Advanced of Total Students group identified FAY (full academic year) by NM Public Education Department Significant predictors from percents of FRL, ELL, Special Education, Mobility were used in the OLS regression that produced the 95% confidence intervals of predicted performance.

Stat- Peers 2010	School	Math			Reading		
		Percent Proficient	Predicted Range Lower Limit	Predicted Range Upper Limit	Percent Proficient	Predicted Range Lower Limit	Predicted Range Upper Limit
7	A. Montoya	52.5	57.8	63.0	59.3	66.6	72.3
	Acoma	42.5	56.8	61.1	58.6	64.9	70.2
	Arroyo Del Oso	65.1	60.6	65.4	76.7	67.2	71.1
	Bellehaven	57.5	57.5	62.2	66.7	64.3	68.5
	Collet Park	61.8	56.4	60.8	67.3	64.7	71.3
	Comanche	58.1	57.5	61.9	65.9	65.0	69.3
	Inez	60.6	58.3	64.0	58.5	64.4	69.2
	Marie Hughes	61.2	62.0	67.8	69.6	66.1	72.2
	Mitchell	60.4	55.6	60.5	67.7	63.7	68.6
	Sierra Vista	59.8	59.0	63.5	66.2	64.8	69.0
	Sombra Del Monte	43.9	54.3	58.5	61.9	62.5	69.2
	Sunset View	70.9	60.7	65.8	70.9	66.7	71.0
Zuni	64.9	56.2	60.4	67.0	62.4	66.8	
8	Bandelier	74.6	65.0	70.9	75.8	71.4	76.0
	Chamiza	73.2	67.7	74.3	77.5	71.1	77.5
	Corrales	69.8	67.6	74.3	72.2	74.1	79.3
	John Baker	67.2	66.5	72.8	71.9	73.4	79.9
	Monte Vista	65.9	65.2	71.2	75.6	70.5	75.3
	Oñate	69.6	63.9	69.9	73.0	71.7	77.1
	Osuna	73.2	64.9	71.4	72.7	71.5	76.8
	Petroglyph	68.9	63.3	69.7	74.7	67.7	73.9
	Sandia Base	47.9	58.5	64.5	59.9	66.4	71.5
	Seven Bar	59.7	63.8	69.7	64.7	67.9	73.6
	Tierra Antigua	64.5	64.3	71.5	76.0	68.2	74.8
	Ventana Ranch	63.3	66.8	73.2	75.9	72.3	77.3
9	Dennis Chavez	81.8	73.1	81.4	84.6	77.0	83.9
	Double Eagle	84.2	75.5	84.6	84.7	80.6	89.1
	Georgia O Keefe	75.2	70.2	78.9	83.8	75.8	83.5
	Hubert Humphrey	77.5	72.0	80.0	81.2	76.6	83.4
	North Star	92.2	74.6	84.1	90.2	78.5	86.8
	San Antonito	81.9	69.2	76.8	86.2	76.7	85.5
	SY Jackson	83.0	73.7	82.3	84.2	79.6	87.5

Predicted ranges are lower and upper bounds of OLS regression 95% confidence intervals.

Proficient and Advanced of Total Students group identified FAY (full academic year) by NM Public Education Department Significant predictors from percents of FRL, ELL, Special Education, Mobility were used in the OLS regression that produced the 95% confidence intervals of predicted performance.

		Math			Reading		
Stat-Peers 2010	School	Percent Proficient	Predicted Range Lower Limit	Predicted Range Upper Limit	Percent Proficient	Predicted Range Lower Limit	Predicted Range Upper Limit
10	Ernie Pyle	18.1	16.7	23.6	32.9	29.7	38.1
	Harrison	22.5	16.7	23.6	39.9	32.0	39.8
	Hayes	15.1	16.7	23.6	34.9	35.3	42.3
	Polk	20.7	16.7	23.6	35.6	36.8	43.5
	Truman	25.5	16.7	23.6	41.0	31.1	39.2
	Van Buren	18.8	16.7	23.6	32.4	35.5	42.5
	Washington	28.2	16.7	23.6	41.9	29.4	37.9
11	Garfield	20.4	23.8	29.4	36.8	33.8	41.2
	Jimmy Carter	33.4	26.9	32.0	39.2	34.0	41.3
	John Adams	20.0	25.8	31.0	34.0	32.9	40.5
	Kennedy	31.7	23.8	29.4	45.7	43.6	49.2
	McKinley	31.6	29.2	34.0	38.7	42.4	48.1
	Taft	37.9	35.8	40.3	46.1	40.7	46.6
	Wilson	31.4	27.3	32.3	45.0	40.2	46.3
12	Cleveland	42.9	39.4	44.0	64.2	54.7	60.7
	Grant	40.3	39.3	43.9	53.5	55.7	61.8
	Jackson	31.7	34.4	38.9	42.2	55.4	61.5
	James Monroe	48.4	49.6	56.0	54.7	55.1	61.2
	Jefferson	60.4	43.6	48.8	65.8	51.7	57.2
	LB Johnson	49.1	50.3	56.9	68.5	52.6	58.2
	Taylor	40.7	43.6	48.8	52.3	52.0	57.5
	Tony Hillerman	42.3	49.8	56.3	50.0	55.9	62.1
13	Desert Ridge	67.4	58.3	67.3	81.3	66.9	76.7
	Eisenhower	71.2	60.3	69.9	77.7	71.7	83.6
	Hoover	49.3	48.3	54.4	68.4	66.1	75.6
	Madison	54.7	52.4	59.6	65.3	63.7	72.4
	Roosevelt	60.2	51.4	58.4	78.1	69.0	79.7

Predicted ranges are lower and upper bounds of OLS regression 95% confidence intervals.

Proficient and Advanced of Total Students group identified FAY (full academic year) by NM Public Education Department Significant predictors from percents of FRL, ELL, Special Education, Mobility were used in the OLS regression that produced the 95% confidence intervals of predicted performance.

		Math			Reading		
Stat-Peers 2010	School	Percent Proficient	Predicted Range Lower Limit	Predicted Range Upper Limit	Percent Proficient	Predicted Range Lower Limit	Predicted Range Upper Limit
14	Albuquerque	39.3	28.5	39.3	54.9	45.6	56.1
	Atrisco Heritage	no data	no data	no data	no data	no data	no data
	Del Norte	30.8	34.9	42.4	45.3	53.1	61.3
	Highland	32.9	22.6	33.3	57.1	46.8	56.8
	Rio Grande	23.4	16.2	28.0	46.4	39.0	52.3
	Valley	26.6	23.6	33.6	44.1	43.8	55.0
	West Mesa	24.5	21.7	34.6	50.4	40.3	53.0
15	Cibola	49.6	46.9	55.2	64.5	61.2	70.3
	Eldorado	60.3	60.9	74.1	71.1	69.1	83.9
	La Cueva	81.5	67.4	87.0	86.7	68.9	83.5
	Manzano	43.8	34.2	50.9	63.7	60.9	69.8
	Sandia	63.5	50.7	61.9	68.9	64.9	76.2
	Volcano Vista	48.5	46.4	54.8	65.4	58.6	66.8

Predicted ranges are lower and upper bounds of OLS regression 95% confidence intervals.
Proficient and Advanced of Total Students group identified FAY (full academic year) by NM Public Education Department
Significant predictors from percents of FRL, ELL, Special Education, Mobility were used in the OLS regression that
produced the 95% confidence intervals of predicted performance.