



**ALBUQUERQUE
PUBLIC SCHOOLS**

Statistical Peers for Benchmarking

2008

August 2008
River Dunavin



ALBUQUERQUE PUBLIC SCHOOLS

BOARD OF EDUCATION

MARY LEE MARTIN
President

BERNA FACIO
Vice President

DOLORES GRIEGO
Secretary

GORDAN ROWE
Instructional Policy Chair

PAULA MAES
District Relations Chair

ROBERT D. LUCERO
Finance/Audit Chair

MARTIN R. ESQUIVEL
Capital Outlay Chair

Superintendent

WINSTON BROOKS

LINDA SINK
Chief Academic Officer

BRAD WINTER
Chief Operations Officer

RUBY ETHRIDGE
Associate Superintendent

DIANE KERCHEN
Associate Superintendent

RAQUEL REEDY
Associate Superintendent

EDUARDO SOTO
Associate Superintendent

INSTRUCTION AND ACCOUNTABILITY

6400 UPTOWN BLVD. NE (400 EAST)

Albuquerque, New Mexico 87110

(505) 848-8710

www.rda.aps.edu

Rose-Ann McKernan

Executive Director

Instruction and Accountability

Statistical Peers for Benchmarking

Albuquerque Public Schools (APS) is organized using a feeder system known as the “cluster system.” In 2008 there were 11 clusters consisting of the elementary and middle schools that feed students to the 11 regular high schools. There is an additional cluster of alternative schools. Every APS cluster has notable diversity of students among its schools. The cluster system is effectively a geographic grouping of schools intended to provide administrative efficiency.

When considering instructional purposes it can be useful to identify schools that have similar student populations. The Statistical Peers for Benchmarking tool represents a data-driven strategy to identify groups of similar schools. The tool addresses the question: “Which APS schools are most alike in terms of student characteristics?” The statistical method K-means cluster analysis was used to form the peer groups of schools based on three variables. The variables were the 2007-2008 percentages of students eligible for free or reduced price meals (FRPM), English language learners (ELL), and ethnicity in terms of underperforming ethnicities¹ (UPE). The procedure assigns schools to groups comprised of similar members called Statistical Peers. The resulting peer groups themselves are also maximally distinct from one another. Once groups were formed a panel of education professionals with broad and deep knowledge of APS schools confirmed the validity of the statistical peer groups. When using the Statistical Peers for Benchmarking tool consider each group an intact set of schools with similar student populations.

The Statistical Peers for Benchmarking tool was designed for many uses such as comparing schools on measures of student achievement, or forming work groups during professional development programs. A primary goal for the tool is to foster collaboration. Once schools are identified as exemplary on some measure, e.g., outperforming expectations on a common math or reading assessment, then principals from high performing schools can be seen as resources for statistical peer schools that are not performing as well. This approach facilitates sharing best practices among schools facing similar challenges. While comparing schools within one statistical peer group is informative, there will be situations for some schools to compare themselves to schools in other peer groups. For example, Special Education programs differ between school sites, thus there may be occasions to choose to make comparisons with schools while taking into account type of Special Education programs offered.

¹ Hispanic, Native American, African American

There are three sections in this report. First, the Statistical Peers for Benchmarking tool presents APS schools in 13 groups of statistical peers, seven elementary, four middle, two high schools

The report has 3 sections:

- Statistical Peers for Benchmarking Tool
- Graphic displays of 2008 SBA results
- Data used to form statistical peer groups and recent SBA results

plus alternative schools. Graphs in the second section display achieved percent proficient and a predicted achievement range for each school in math and reading. Predicted achievement ranges are 95% confidence intervals from multiple regression analyses. The graphs show only one moment in time (status), so growth from

year to year is not considered. In other words, while a school may appear to have performed well or poorly, remarkable loss or gain in performance may be evident when a series of its achievement measures are examined. Predicted achievement ranges provide another way to consider SBA results thus adding information to annual NCLB reports. The third section consists of data used in forming the 2008 Statistical Peer groups and proficiency results from recent New Mexico standards-referenced math and reading assessments.

Using Statistical Peers for Benchmarking

Figure 1

Consider each statistical peers group a distinct set of comparison schools. There probably will be situations for schools to compare themselves to schools in other peer groups. Statistical Peers are listed alphabetically within each group, not by closeness of similarity to one another.

Consider each group a distinct set of comparison schools

Statistical Peers Group 3
Alameda
Cochiti
Hodgin
Lew Wallace
Longfellow
Los Ranchos
MacArthur
Mission Avenue
Painted Sky
Pajarito
Reginald Chavez
S. R. Marmon
Tomasita

2008

Statistical Peers for Benchmarking

2008

Statistical Peer Group 1	Statistical Peer Group 2	Statistical Peer Group 3	Statistical Peer Group 4	Statistical Peer Group 5	Statistical Peer Group 6	Statistical Peer Group 7
Adobe Acres Armijo East San Jose Emerson Eugene Field La Mesa Lavaland Mountain View Wherry	Alamosa Atrisco Barcelona Carlos Rey Dolores Gonzales Duranes Edward Gonzales Hawthorne Kirtland Kit Carson La Luz Los Padillas Lowell Mary A. Binford Navajo Valle Vista Whittier	Alameda Cochiti Hodgin Lew Wallace Longfellow Los Ranchos MacArthur Mission Avenue Painted Sky Pajarito Reginald Chavez S. R. Marmon Tomasita	Alvarado Bel-Air Chaparral Eubank Governor Bent Griegos Mark Twain McCollum Montezuma	A. Montoya Acoma Apache Arroyo Del Oso Bellehaven Chelwood Collet Park Edmund G. Ross Inez Manzano Mesa Matheson Park Mitchell Sandia Base Sierra Vista Sombra del Monte Zia Zuni	Bandelier Chamiza Comanche Corrales John Baker Marie Hughes Monte Vista Oñate Osuna Petroglyph Seven Bar Tierra Antigua Ventana Ranch	Dennis Chavez Double Eagle Georgia O Keefe Hubert Humphrey North Star S. Y. Jackson San Antonito
Statistical Peer Group 8	Statistical Peer Group 9	Statistical Peer Group 10	Statistical Peer Group 11	Statistical Peer Group 12	Statistical Peer Group 13	Alternative Schools
Ernie Pyle Harrison Hayes Polk Truman Van Buren Washington	Garfield Jimmy Carter John Adams Kennedy McKinley Taft ¹ Wilson	Cleveland Grant Jackson Jefferson James Monroe LB Johnson Taylor	Desert Ridge Eisenhower Hoover Madison Roosevelt	Albuquerque Del Norte Highland Rio Grande Valley West Mesa	Cibola Eldorado La Cueva Manzano Sandia Volcano Vista	Career Enrichment Ctr. 9-12 Early College Academy 9-10 Evening High 10-12 Family School K-8 Freedom High 10-12 New Futures 6-12 School on Wheels 9-12 Sierra Alternative 9-12 Vision Quest 6-8

Statistical Peer Groups are comprised of schools with most similar proportions of students in these areas: eligible for meal subsidy, ELL status, and NCLB group membership



Comparison of Achieved Percent Proficient and Predicted Achievement Range

The solid bars reflect the schools' percent proficient achieved (Figure 2). The hairlines (95% confidence interval) show the predicted percent proficient range from the statistical method of linear regression. The results are based on each school's student population and the actual 2008 APS NMSBA performance. The graphs with the predicted achievement ranges provide another way to consider the NMSBA results. Figure 3 displays the annual measurable objective (AMO) target for meeting AYP. The degree of overlap of the confidence intervals indicates highest similarity among schools within Statistical Peer Groups, i.e., schools A, G and I show substantial overlap, as do schools C, D, E. While all the schools within a Statistical Peer Group are comparable, noting the confidence interval overlap can reveal more precise similarity.

Figure 2

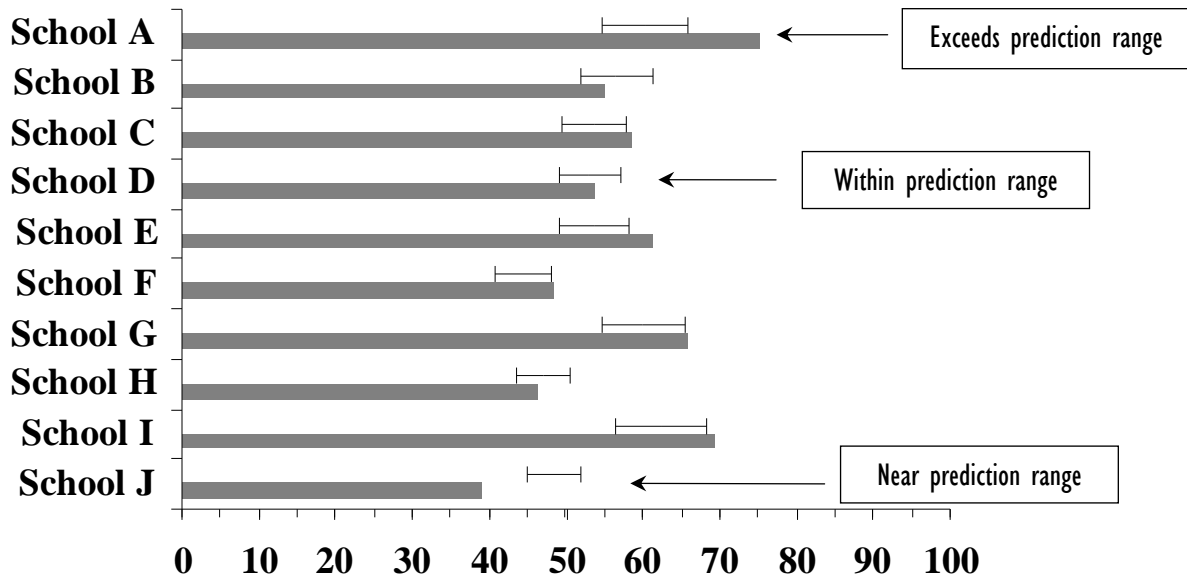
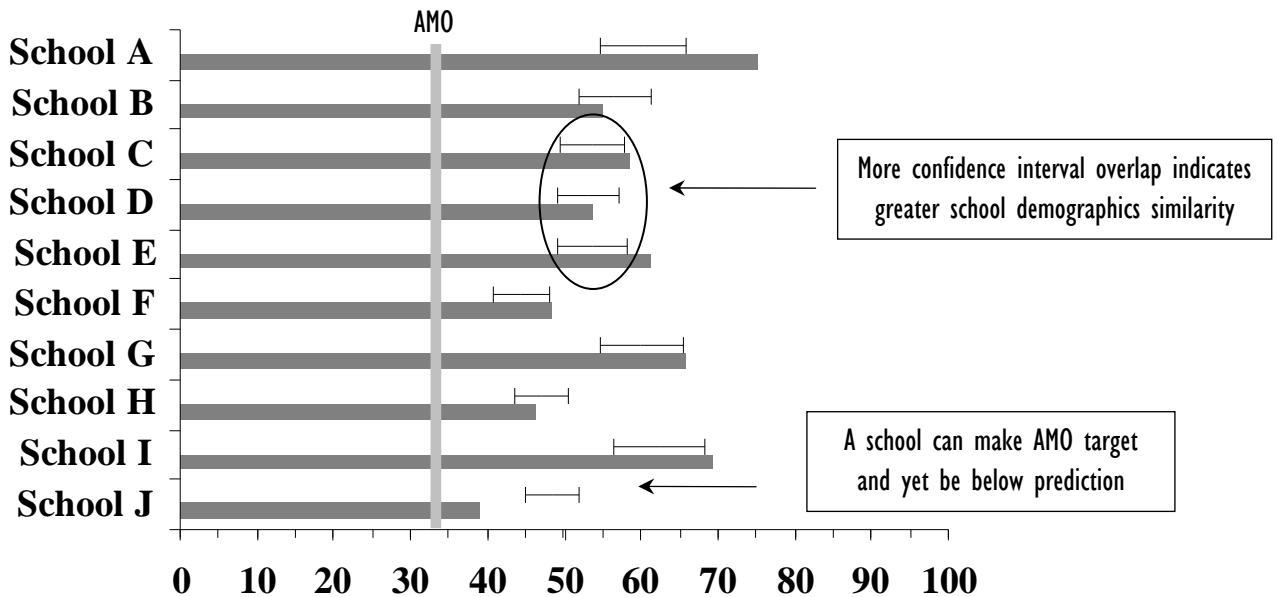


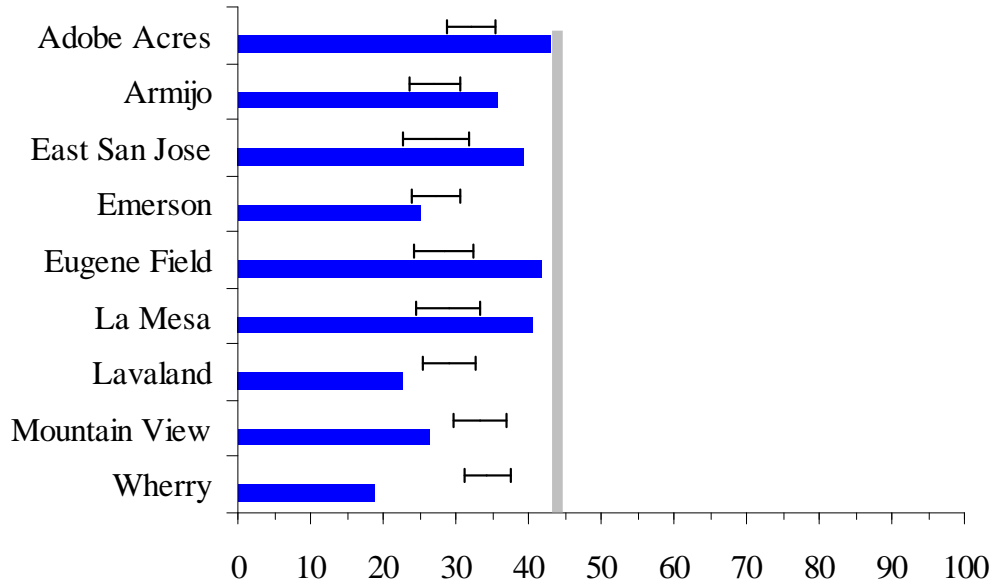
Figure 3



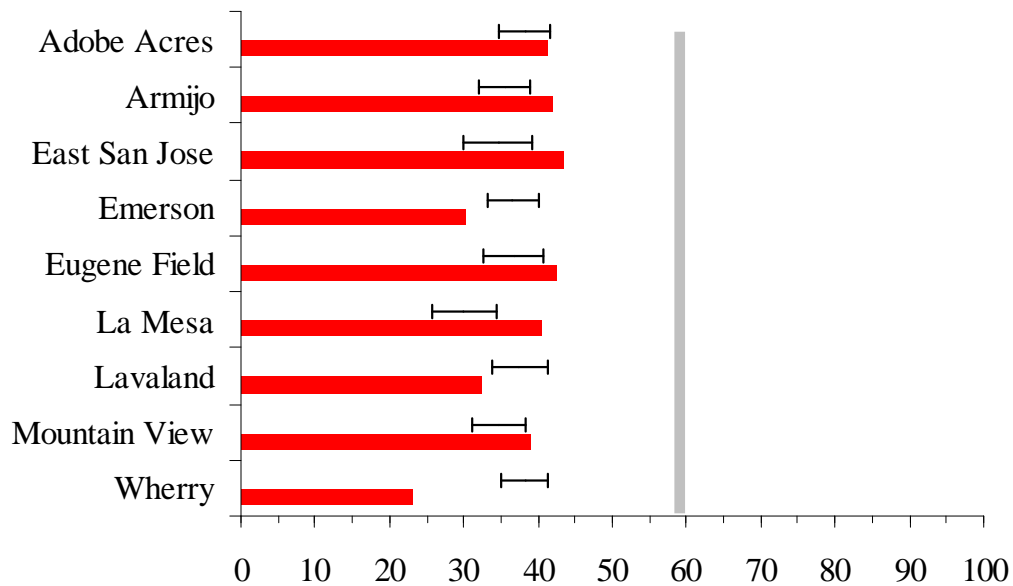
Comparison of Achieved Percent Proficient and Predicted Achievement Range

Statistical Peers Group 1 NM Standards Based Assessment Spring 2008

Math Percent Proficient 2008



Reading Percent Proficient 2008

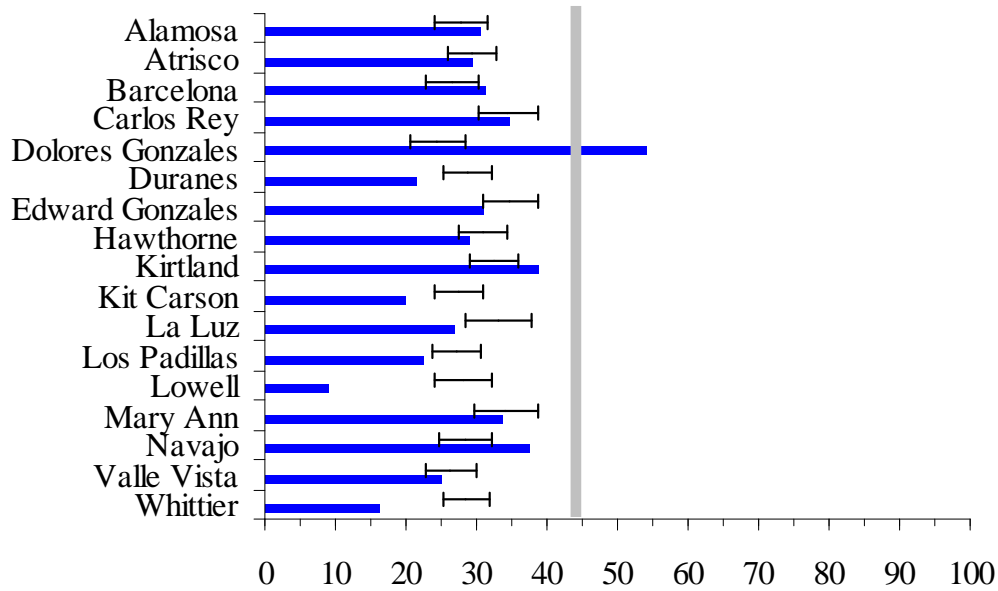


*Solid bars show schools' percent proficient achieved.
 Hairlines show predicted proficiency range (95% confidence interval).
 Vertical line is NM annual measurable objective (AMO); K-5, 6-8, 9-12*

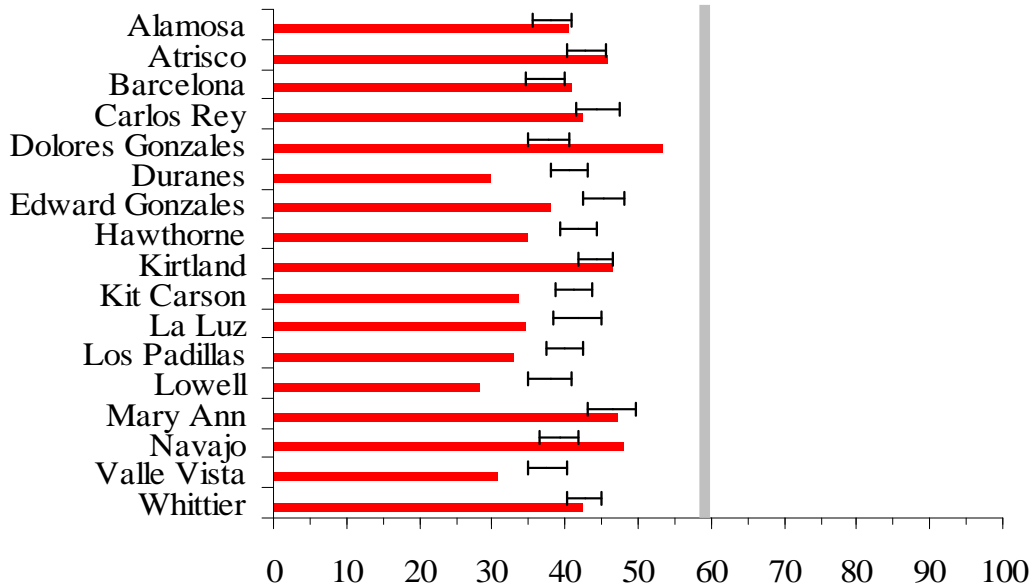
Comparison of Achieved Percent Proficient and Predicted Achievement Range

Statistical Peers Group 2 NM Standards Based Assessment Spring 2008

Math Percent Proficient 2008



Reading Percent Proficient 2008

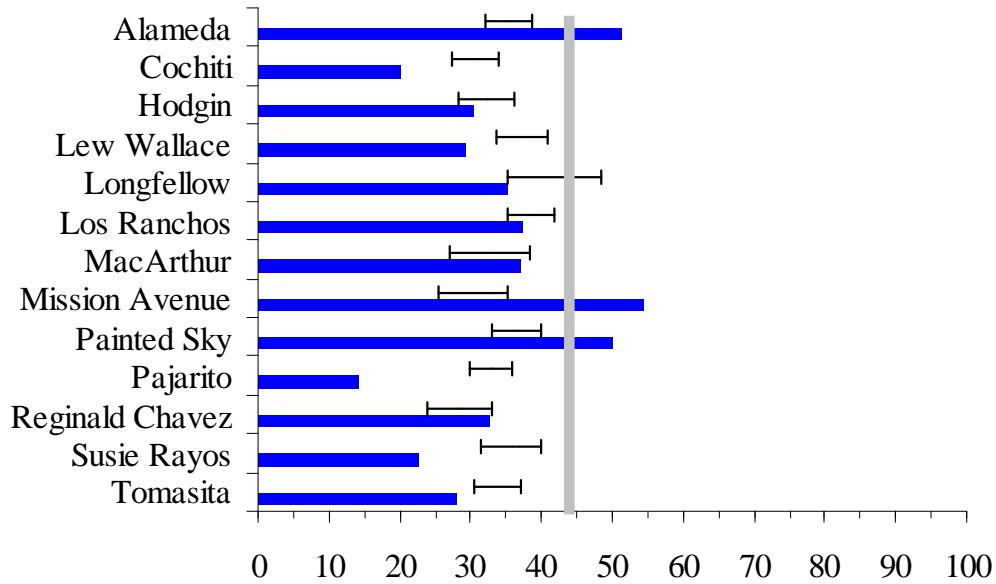


*Solid bars show schools' percent proficient achieved.
Hairlines show predicted proficiency range (95% confidence interval).
Vertical line is NM annual measurable objective (AMO); K-5, 6-8, 9-12*

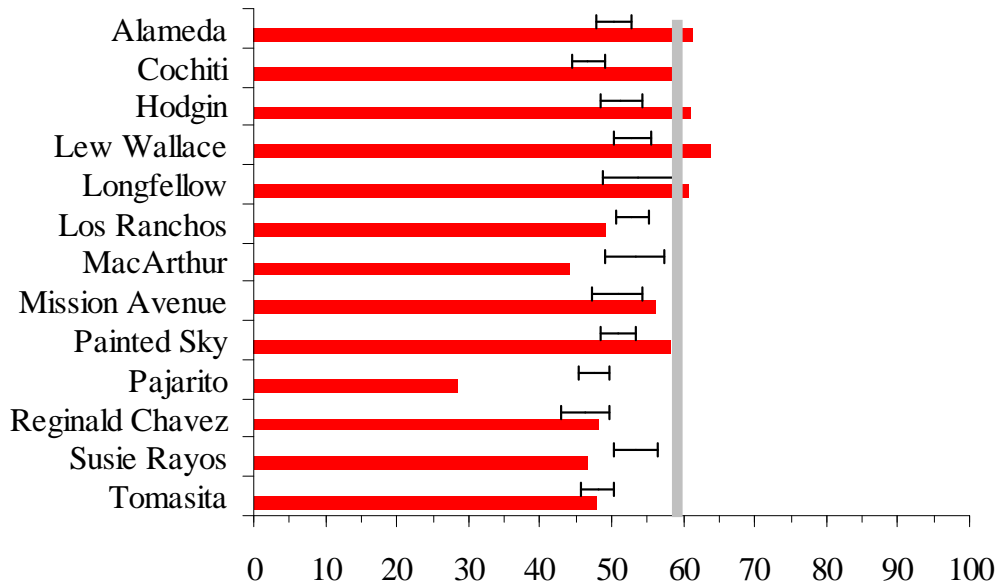
Comparison of Achieved Percent Proficient and Predicted Achievement Range

Statistical Peers Group 3 NM Standards Based Assessment Spring 2008

Math Percent Proficient 2008



Reading Percent Proficient 2008

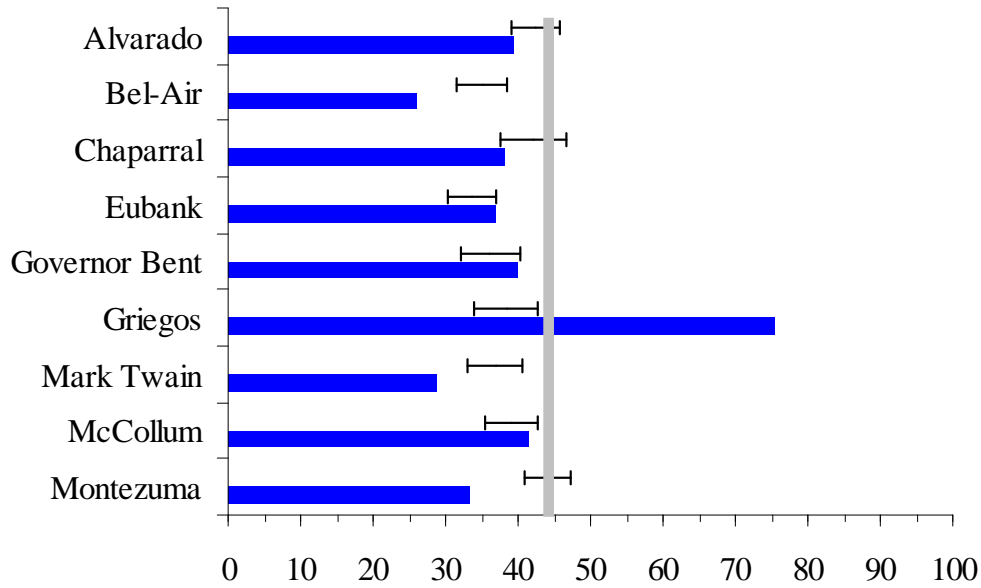


*Solid bars show schools' percent proficient achieved.
Hairlines show predicted proficiency range (95% confidence interval).
Vertical line is NM annual measurable objective (AMO); K-5, 6-8, 9-12*

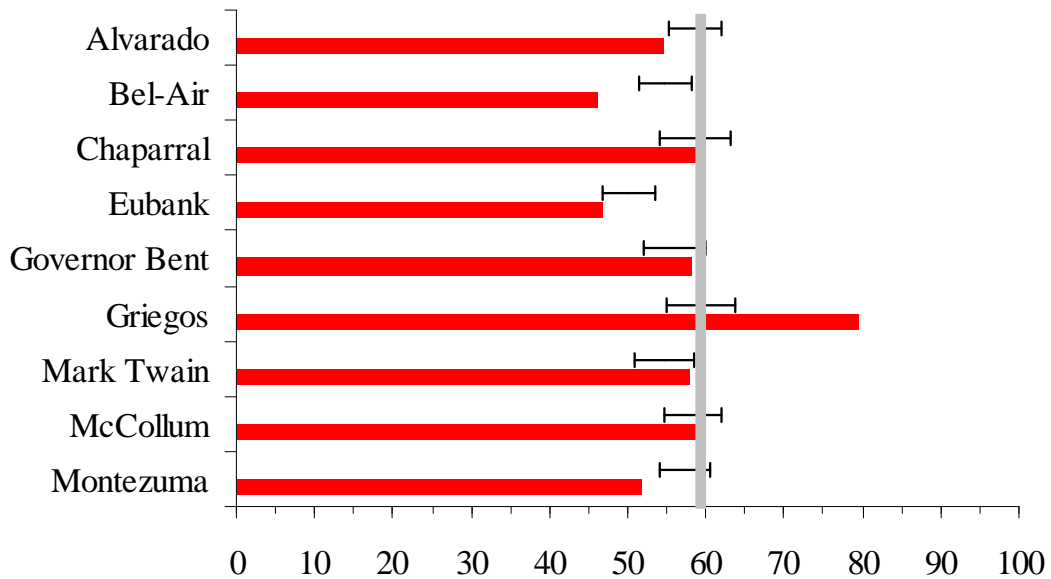
Comparison of Achieved Percent Proficient and Predicted Achievement Range

Statistical Peers Group 4 NM Standards Based Assessment Spring 2008

Math Percent Proficient 2008



Reading Percent Proficient 2008

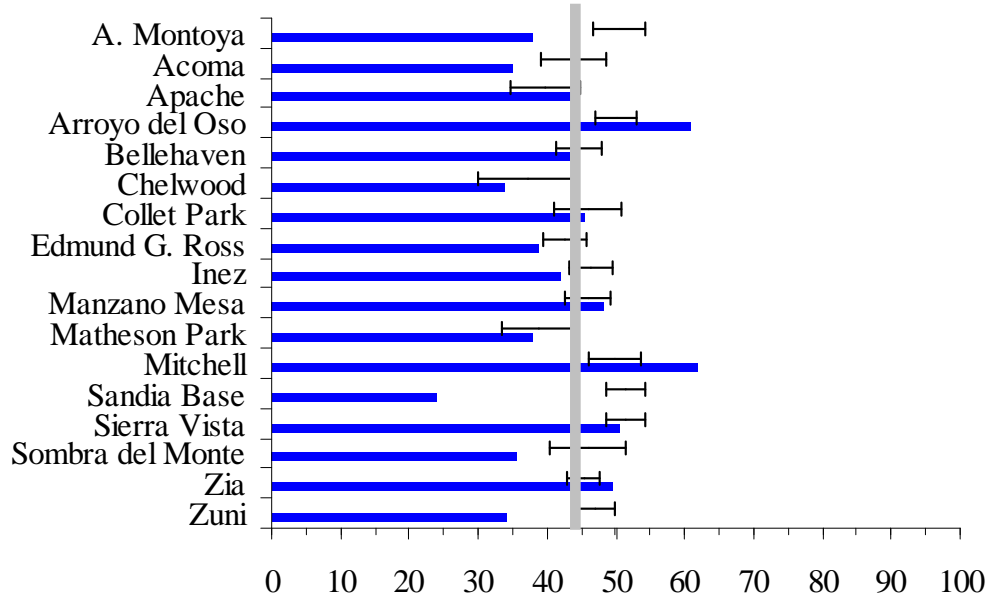


*Solid bars show schools' percent proficient achieved.
Hairlines show predicted proficiency range (95% confidence interval).
Vertical line is NM annual measurable objective (AMO); K-5, 6-8, 9-12*

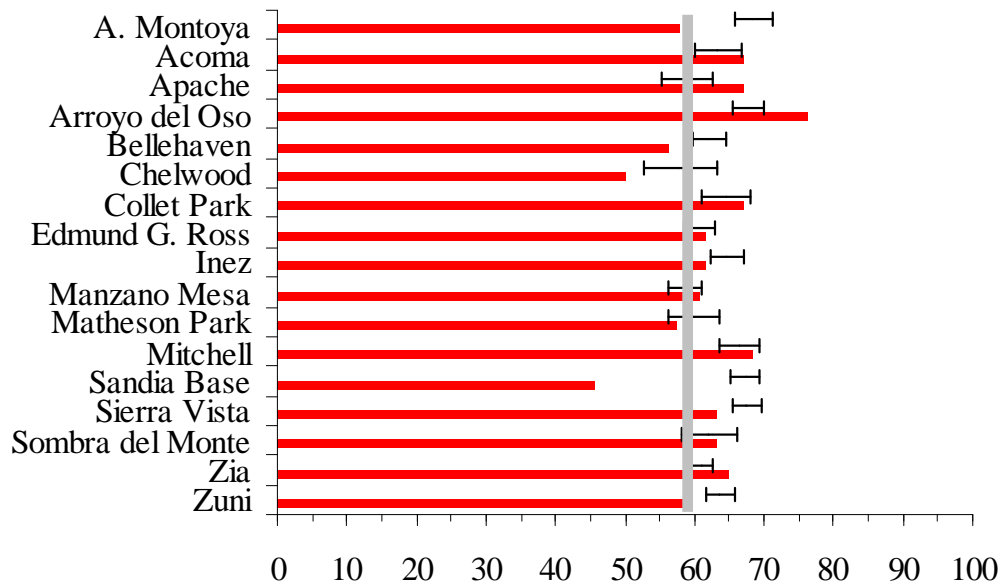
Comparison of Achieved Percent Proficient and Predicted Achievement Range

Statistical Peers Group 5 NM Standards Based Assessment Spring 2008

Math Percent Proficient 2008



Reading Percent Proficient 2008

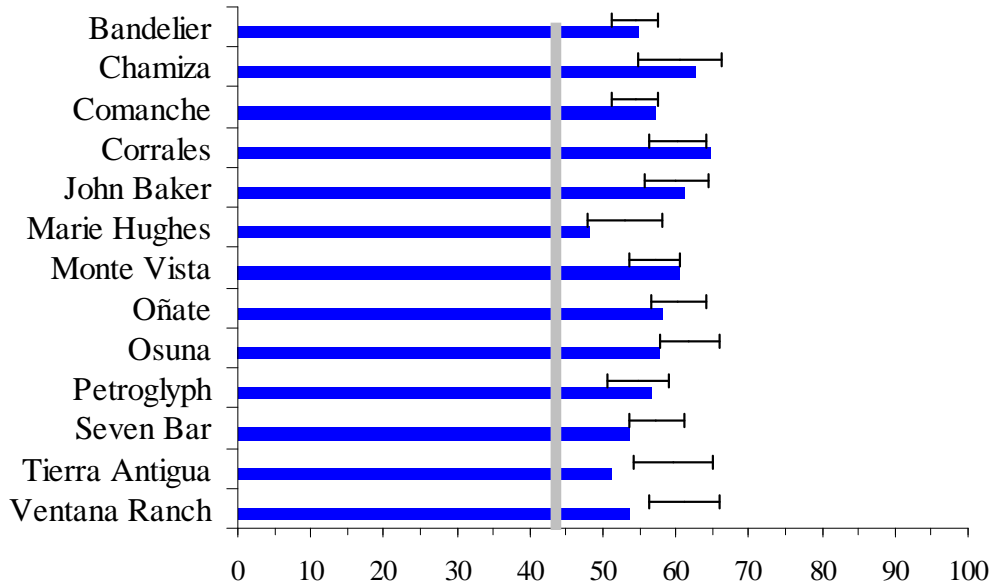


*Solid bars show schools' percent proficient achieved.
Hairlines show predicted proficiency range (95% confidence interval).
Vertical line is NM annual measurable objective (AMO); K-5, 6-8, 9-12*

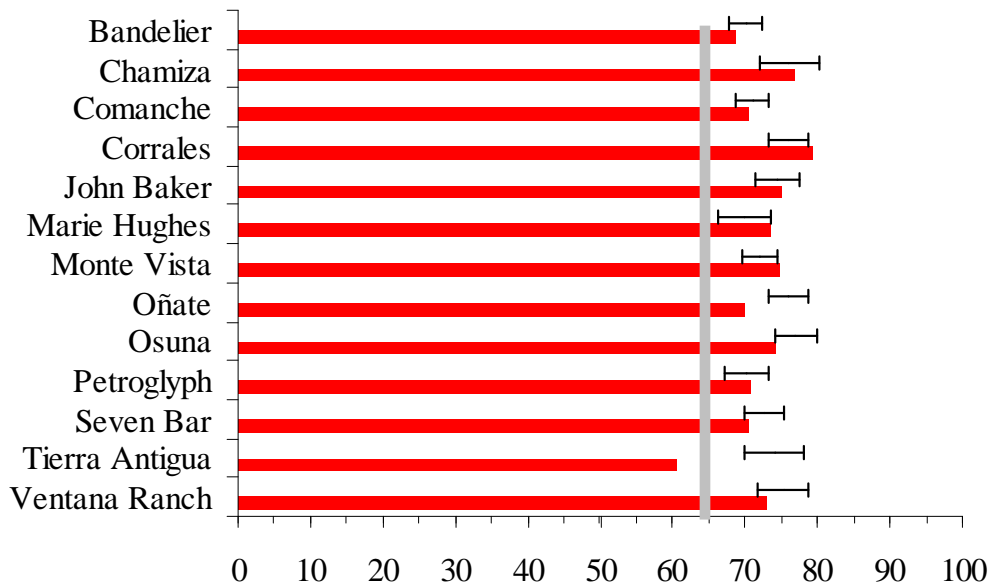
Comparison of Achieved Percent Proficient and Predicted Achievement Range

Statistical Peers Group 6 NM Standards Based Assessment Spring 2008

Math Percent Proficient 2008



Reading Percent Proficient 2008

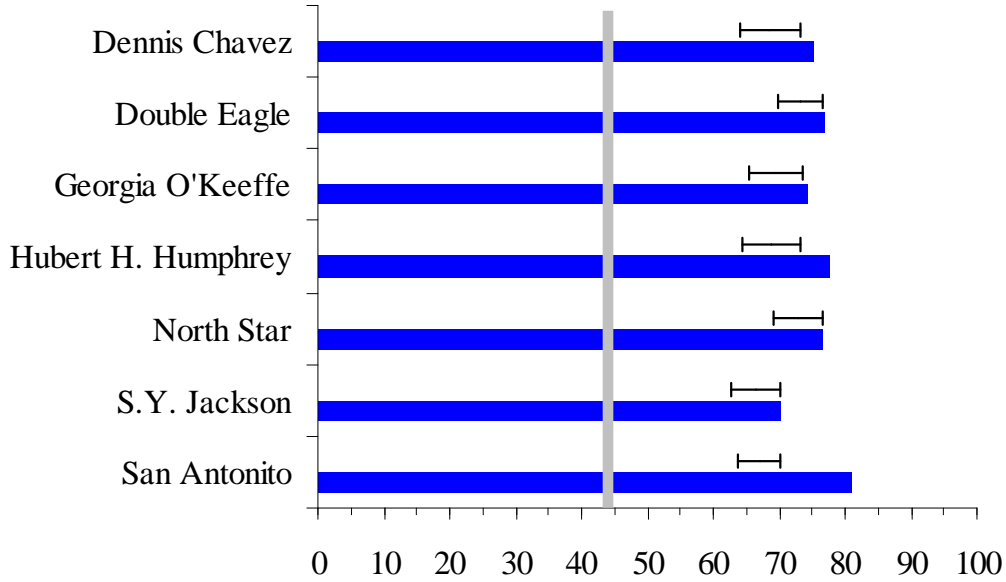


*Solid bars show schools' percent proficient achieved.
Hairlines show predicted proficiency range (95% confidence interval).
Vertical line is NM annual measurable objective (AMO); K-5, 6-8, 9-12*

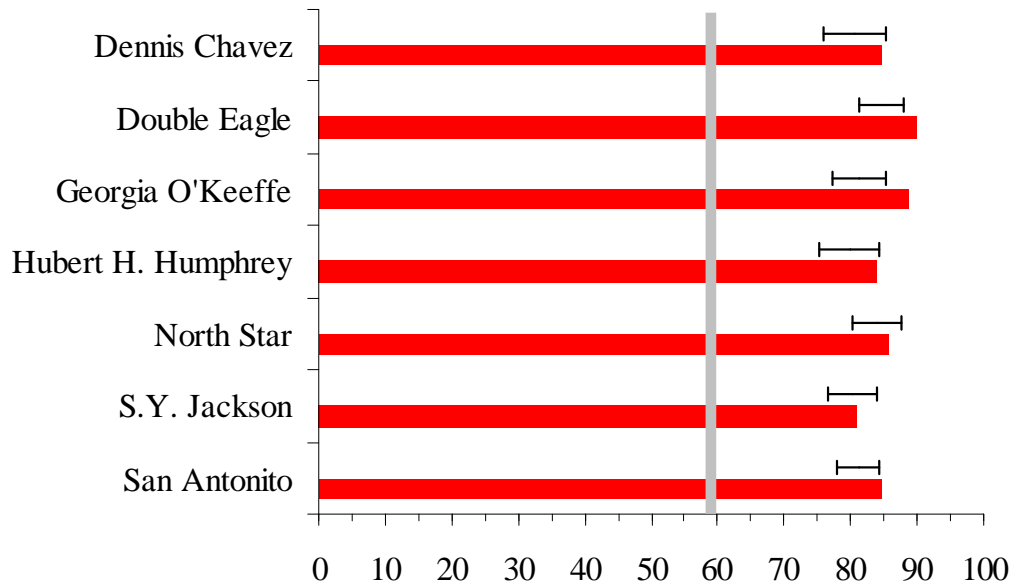
Comparison of Achieved Percent Proficient and Predicted Achievement Range

Statistical Peers Group 7 NM Standards Based Assessment Spring 2008

Math Percent Proficient 2008



Reading Percent Proficient 2008

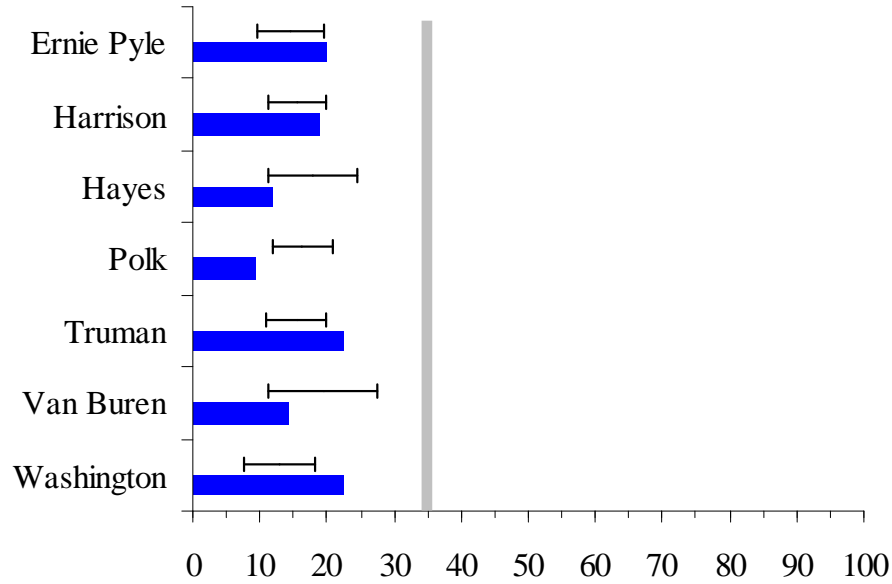


*Solid bars show schools' percent proficient achieved.
Hairlines show predicted proficiency range (95% confidence interval).
Vertical line is NM annual measurable objective (AMO); K-5, 6-8, 9-12*

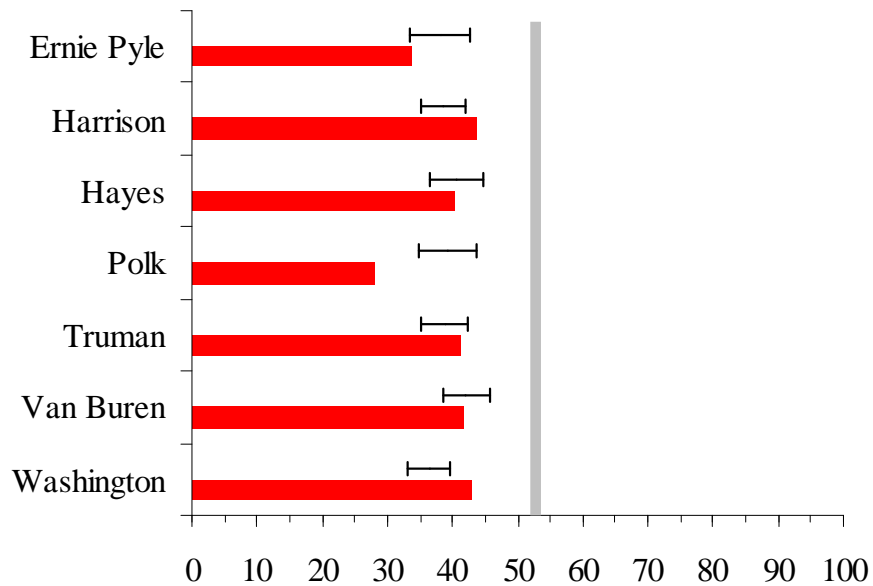
Comparison of Achieved Percent Proficient and Predicted Achievement Range

Statistical Peers Group 8 NM Standards Based Assessment Spring 2008

Math Percent Proficient 2008



Reading Percent Proficient 2008

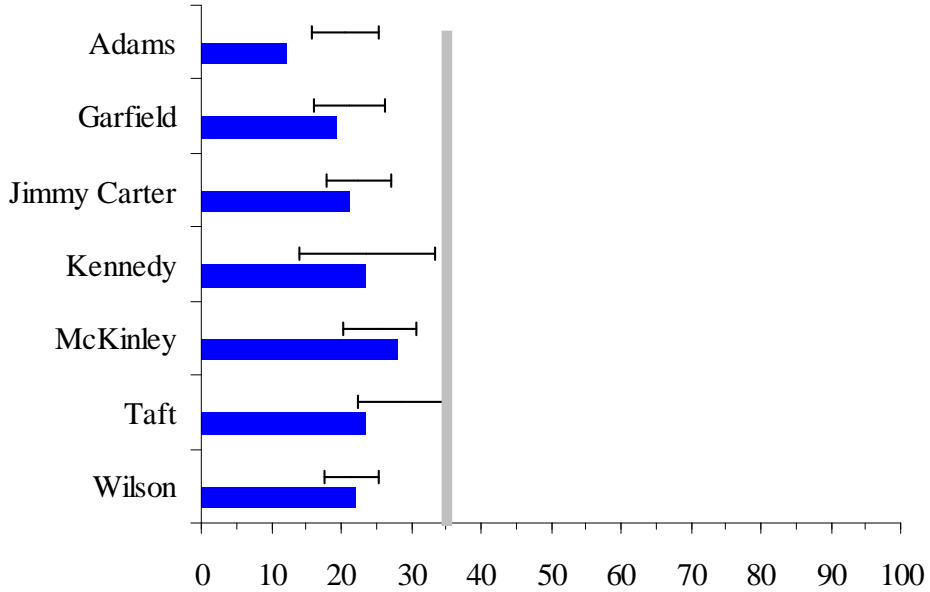


*Solid bars show schools' percent proficient achieved.
Hairlines show predicted proficiency range (95% confidence interval).
Vertical line is NM annual measurable objective (AMO); K-5, 6-8, 9-12*

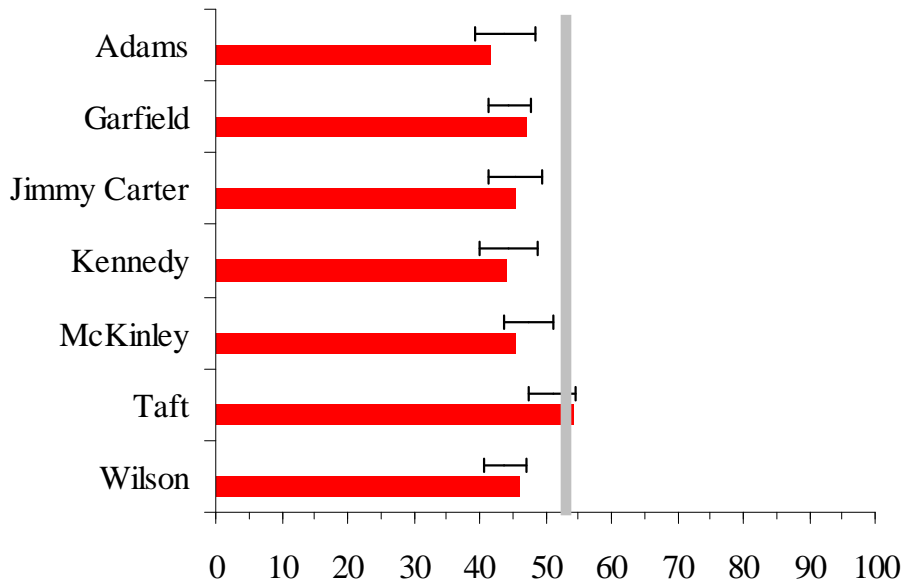
Comparison of Achieved Percent Proficient and Predicted Achievement Range

Statistical Peers Group 9 NM Standards Based Assessment Spring 2008

Math Percent Proficient 2008



Reading Percent Proficient 2008

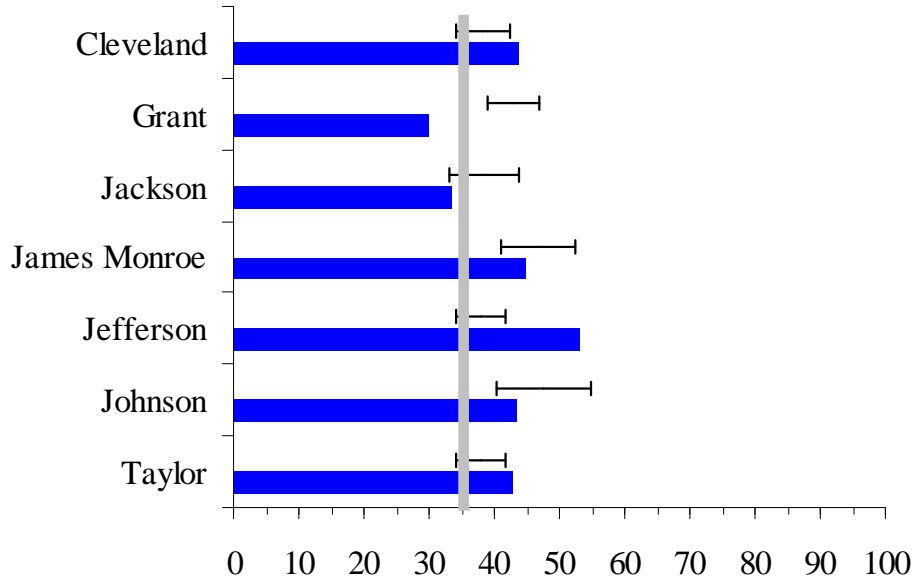


*Solid bars show schools' percent proficient achieved.
 Hairlines show predicted proficiency range (95% confidence interval).
 Vertical line is NM annual measurable objective (AMO); K-5, 6-8, 9-12*

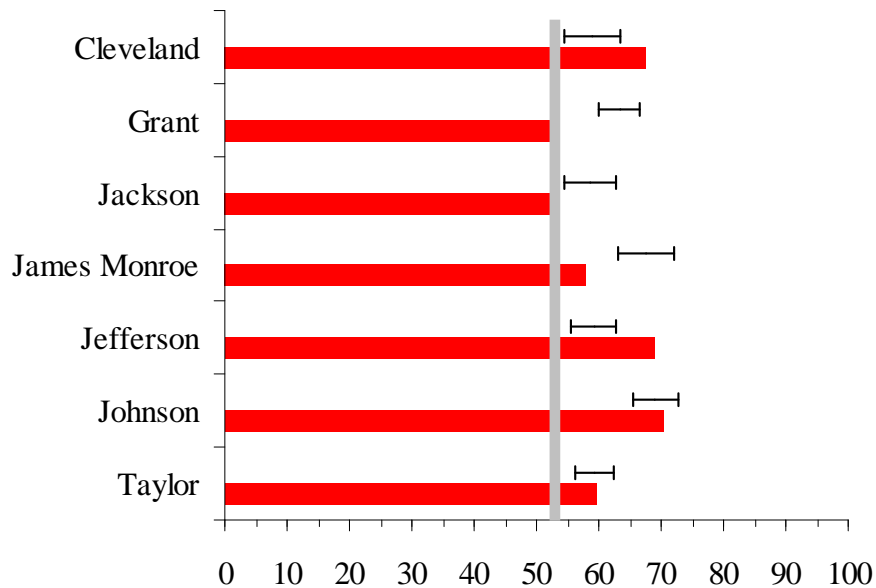
Comparison of Achieved Percent Proficient and Predicted Achievement Range

Statistical Peers Group 10 NM Standards Based Assessment Spring 2008

Math Percent Proficient 2008



Reading Percent Proficient 2008

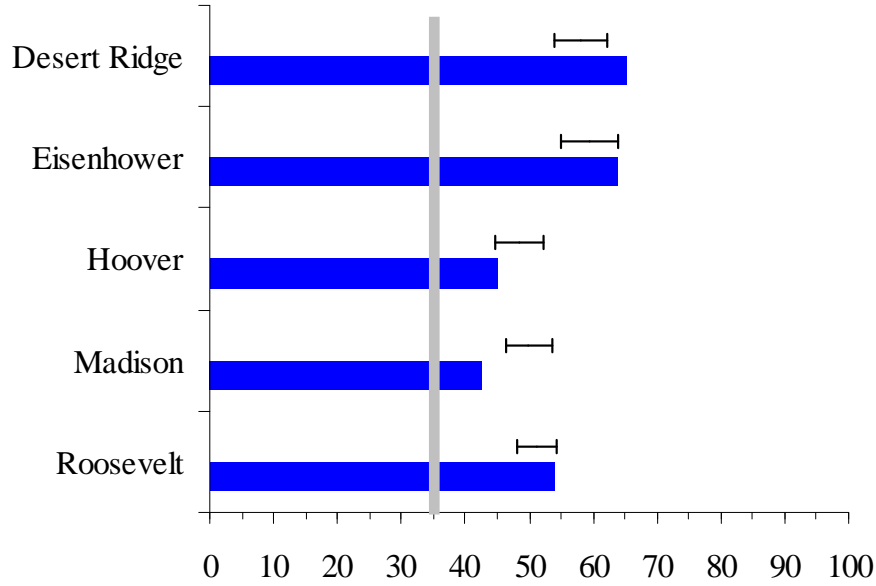


*Solid bars show schools' percent proficient achieved.
Hairlines show predicted proficiency range (95% confidence interval).
Vertical line is NM annual measurable objective (AMO); K-5, 6-8, 9-12*

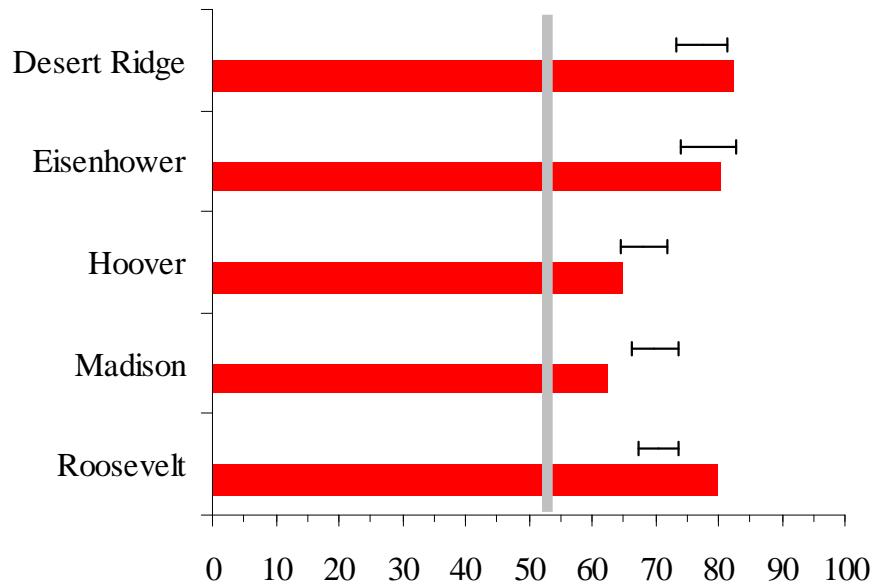
Comparison of Achieved Percent Proficient and Predicted Achievement Range

Statistical Peers Group 11 NM Standards Based Assessment Spring 2008

Math Percent Proficient 2008



Reading Percent Proficient 2008

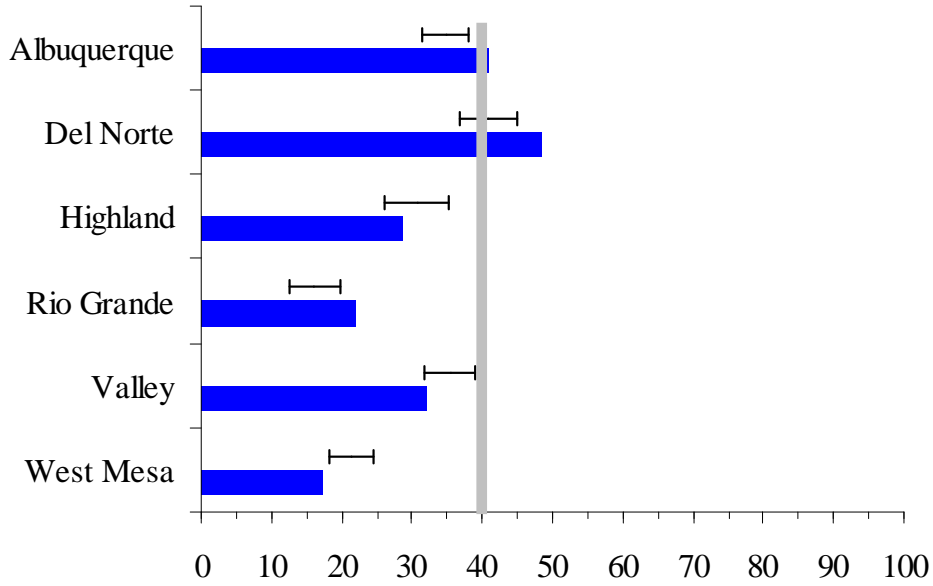


*Solid bars show schools' percent proficient achieved.
 Hairlines show predicted proficiency range (95% confidence interval).
 Vertical line is NM annual measurable objective (AMO); K-5, 6-8, 9-12*

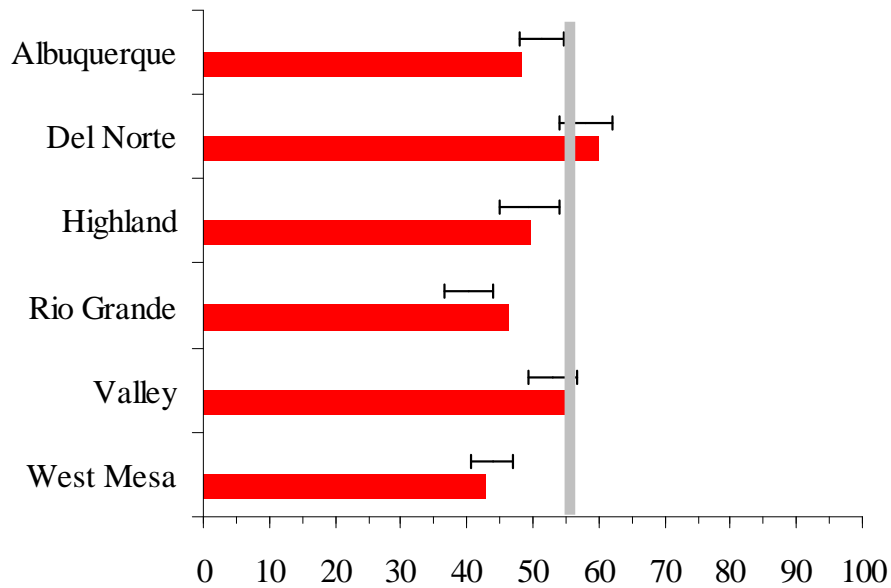
Comparison of Achieved Percent Proficient and Predicted Achievement Range

Statistical Peers Group 12 NM Standards Based Assessment Spring 2008

Math Percent Proficient 2008



Reading Percent Proficient 2008

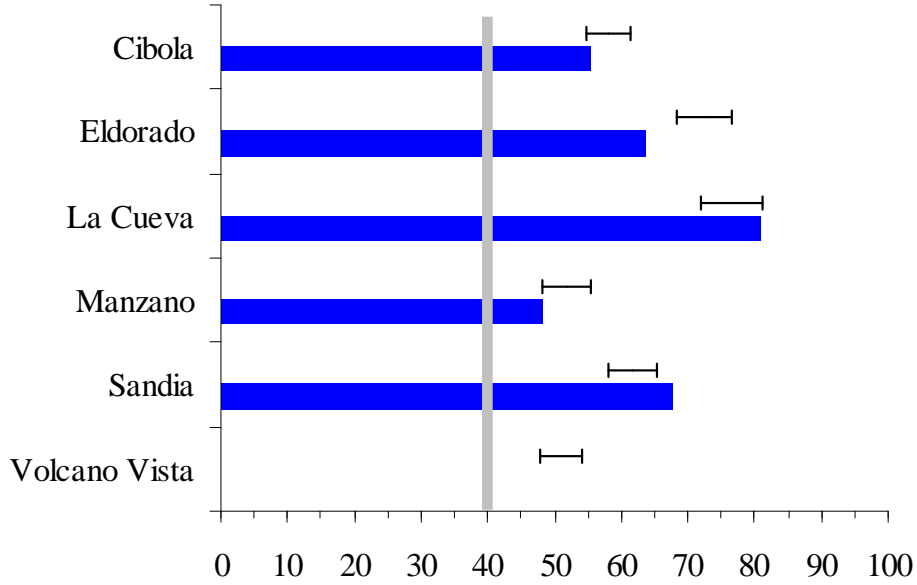


*Solid bars show schools' percent proficient achieved.
 Hairlines show predicted proficiency range (95% confidence interval).
 Vertical line is NM annual measurable objective (AMO); K-5, 6-8, 9-12*

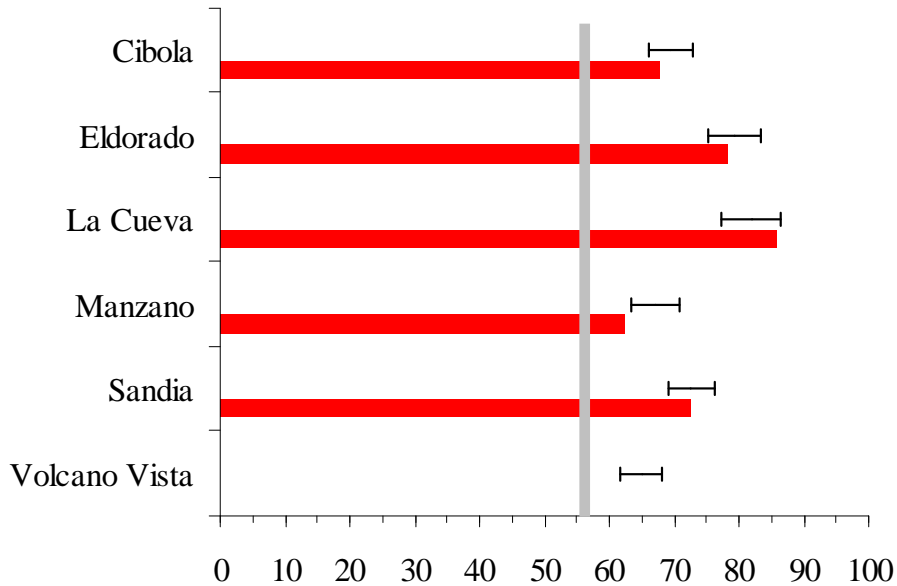
Comparison of Achieved Percent Proficient and Predicted Achievement Range

Statistical Peers Group 13 NM Standards Based Assessment Spring 2008

Math Percent Proficient 2008



Reading Percent Proficient 2008



*Solid bars show schools' percent proficient achieved.
Hairlines show predicted proficiency range (95% confidence interval).
Vertical line is NM annual measurable objective (AMO); K-5, 6-8, 9-12*

Proficiency by School All FAY Students 2007 - 2008

Table 1. Demographic Data 2007-2008 and NMSBA Performance Spring 2008

StatPeers Group	School	FRPM ¹ % 2007-08	ELL ² % 2007-08	UPE ³ % 2007-08	Math % proficient ⁴ SBA 2008	Reading % proficient ⁴ SBA 2008
1	Adobe Acres ES	87.3	54.2	92.8	43.1	41.4
	Armijo ES	96.2	51.8	97.3	35.7	41.9
	East San Jose ES	97.4	55.0	94.9	39.3	43.4
	Emerson ES	97.4	49.0	87.6	25.3	30.1
	Eugene Field ES	93.2	50.9	97.0	41.9	42.4
	La Mesa ES	99.1	71.0	95.7	40.5	40.5
	Lavaland ES	92.2	50.0	94.1	22.8	32.2
	Mountain View ES	90.2	66.1	89.0	26.3	39.0
	Wherry ES	84.8	58.5	90.4	18.9	23.1
2	Alamosa ES	93.1	45.9	95.4	30.7	40.7
	Atrisco ES	86.5	35.3	94.5	29.3	45.9
	Barcelona ES	95.8	46.0	95.5	31.3	40.8
	Carlos Rey ES	77.8	41.0	93.2	34.6	42.4
	Dolores Gonzales ES	98.7	40.6	94.2	54.1	53.5
	Duranos ES	89.8	40.8	94.7	21.7	30.0
	Edward Gonzales ES	77.2	39.2	91.4	31.0	38.0
	Hawthorne ES	87.7	41.5	85.8	29.0	35.0
	Kirtland ES	84.3	37.9	80.4	38.6	46.6
	Kit Carson ES	91.0	36.7	94.5	19.9	33.5
	La Luz ES	81.7	46.1	96.1	26.9	34.6
	Los Padillas ES	92.9	39.4	93.2	22.6	33.0
	Lowell ES	94.0	47.3	90.0	9.2	28.4
	Mary Ann Binford ES	76.3	34.7	94.1	33.7	47.1
	Navajo ES	92.8	43.7	89.2	37.6	48.0
Valle Vista ES	95.6	44.9	96.2	25.0	30.9	
Whittier ES	89.5	34.6	88.6	16.2	42.3	
3	Alameda ES	73.2	26.4	84.7	51.3	61.2
	Cochiti ES	83.1	26.8	86.4	20.0	58.8
	Hodgin ES	78.2	17.2	78.9	30.5	61.1
	Lew Wallace ES	68.7	22.5	82.0	29.3	63.8
	Longfellow ES	59.2	29.0	90.3	35.3	60.7
	Los Ranchos ES	67.2	24.7	80.8	37.3	49.1
	MacArthur ES	73.5	12.3	86.8	37.1	44.3
	Mission Avenue ES	81.3	14.9	79.8	54.5	56.0
	Painted Sky ES	70.9	26.6	84.1	50.0	58.3
	Pajarito ES	79.2	29.2	85.4	14.3	28.6
	Reginald Chavez ES	84.9	24.0	93.5	32.6	48.2
	Susie Rayos Marmon ES	70.2	18.2	82.9	22.6	46.7
	Tomasita ES	80.2	29.8	74.6	27.9	47.7

¹ FRPM, student eligibility for free or reduced priced meals, a proxy measure for poverty

² ELL, English language learners

³ UPM, underperforming minorities, ethnic groups that often score less than Whites on standardized assessments: African American, Hispanic, Native American

⁴ All students group from New Mexico Public Education Department AYP Report (adequate yearly progress)

Proficiency by School All FAY Students 2007 - 2008

StatPeers Group	School	FRPM ¹ % 2007-08	ELL ² % 2007-08	UPE ³ % 2007-08	Math % proficient ⁴ SBA 2008	Reading % proficient ⁴ SBA 2008
4	Alvarado ES	58.9	16.0	69.2	39.3	54.6
	Bel-Air ES	70.9	12.9	78.5	26.0	46.2
	Chaparral ES	59.0	15.5	70.9	38.1	59.7
	Eubank ES	80.1	23.3	68.8	37.1	46.9
	Governor Bent ES	71.9	11.7	64.3	40.1	58.2
	Griegos ES	61.2	6.1	80.3	75.5	79.6
	Mark Twain ES	71.7	16.9	65.8	28.8	58.0
	McCollum ES	66.0	11.0	61.6	41.5	59.9
	Montezuma ES	59.4	23.7	62.8	33.2	51.7
5	A. Montoya ES	44.6	4.2	43.3	37.8	57.8
	Acoma ES	57.3	5.8	49.4	34.9	67.0
	Apache ES	66.3	10.1	54.2	44.4	67.0
	Arroyo del Oso ES	44.0	5.1	49.9	60.9	76.2
	Bellehaven ES	56.2	10.9	54.3	43.1	56.3
	Chelwood ES	72.0	8.2	50.5	33.7	50.3
	Collet Park ES	54.3	6.6	45.3	45.4	67.1
	Edmund G. Ross ES	58.5	10.4	62.0	38.9	61.8
	Inez ES	51.0	7.0	55.0	42.0	61.7
	Manzano Mesa ES	57.2	23.5	55.9	48.4	60.6
	Matheson Park ES	66.2	5.9	56.9	38.0	57.4
	Mitchell ES	47.1	9.0	43.7	61.8	68.5
	Sandia Base ES	43.0	9.2	48.0	24.1	45.8
	Sierra Vista ES	41.3	8.6	53.4	50.6	63.2
	Sombra del Monte ES	57.2	13.8	43.2	35.6	63.4
	Zia ES	54.3	15.5	61.4	49.4	65.0
Zuni ES	49.6	10.6	61.1	34.2	59.4	
6	Bandelier ES	37.0	7.4	43.2	54.8	68.8
	Chamiza ES	20.8	2.5	49.6	62.5	76.9
	Comanche ES	35.8	4.8	45.1	57.2	70.6
	Corrales ES	23.9	2.0	39.9	64.7	79.4
	John Baker ES	27.7	6.2	31.7	61.0	75.1
	Marie Hughes ES	34.8	5.4	60.1	48.1	73.7
	Monte Vista ES	32.1	7.3	40.0	60.6	74.9
	Oñate ES	24.6	1.8	36.2	58.0	70.0
	Osuna ES	22.0	2.4	33.9	57.7	74.2
	Petroglyph ES	33.4	7.6	55.0	56.6	70.9
	Seven Bar ES	29.6	5.8	47.1	53.6	70.5
	Tierra Antigua ES	23.4	6.4	51.8	51.2	60.4
	Ventana Ranch ES	21.7	5.8	45.1	53.7	72.8

¹ FRPM, student eligibility for free or reduced priced meals, a proxy measure for poverty

² ELL, English language learners

³ UPM, underperforming minorities, ethnic groups that often score less than Whites on standardized assessments: African American, Hispanic, Native American

⁴ All students group from New Mexico Public Education Department AYP Report (adequate yearly progress)

Proficiency by School All FAY Students 2007 - 2008

StatPeers Group	School	FRPM¹ % 2007-08	ELL² % 2007-08	UPE³ % 2007-08	Math % proficient⁴ SBA 2008	Reading % proficient⁴ SBA 2008
7	Dennis Chavez ES	10.2	5.3	28.4	75.1	84.7
	Double Eagle ES	3.1	2.7	15.5	76.9	90.1
	Georgia O'Keeffe ES	9.6	4.6	23.4	74.3	88.7
	Hubert H. Humphrey ES	11.6	7.9	24.2	77.7	83.8
	North Star ES	3.3	4.2	19.5	76.7	85.5
	S.Y. Jackson ES	15.2	1.8	21.9	70.2	80.8
	San Antonito ES	14.5	0.6	18.4	81.0	84.7
8	Ernie Pyle MS	89.7	36.4	96.2	19.8	33.7
	Harrison MS	90.3	33.0	91.4	19.0	43.7
	Hayes MS	86.8	40.5	85.7	11.8	40.3
	Polk MS	89.4	31.2	89.1	9.4	27.9
	Truman MS	88.1	27.7	95.2	22.6	41.4
	Van Buren MS	84.0	44.4	83.5	14.3	41.5
	Washington MS	94.2	38.9	96.4	22.6	43.0
9	Adams MS	76.0	22.3	91.1	12.3	41.7
	Garfield MS	73.9	22.9	91.6	19.5	47.2
	Jimmy Carter MS	72.6	21.5	88.2	21.3	45.5
	Kennedy MS	83.2	13.0	65.9	23.5	44.1
	McKinley MS	70.8	11.8	77.4	28.1	45.3
	Taft MS	60.5	8.4	80.1	23.6	54.3
	Wilson MS	80.1	27.6	80.5	22.2	46.0
10	Cleveland MS	48.5	5.6	55.4	43.9	67.6
	Grant MS	39.2	3.9	48.9	30.1	51.9
	Jackson MS	50.9	6.2	50.6	33.6	53.0
	James Monroe MS	25.8	4.6	53.3	44.9	57.9
	Jefferson MS	45.5	7.4	61.8	53.2	69.0
	Johnson MS	21.5	1.8	55.8	43.6	70.2
	Taylor MS	45.1	7.6	62.1	42.9	59.8
11	Desert Ridge MS	9.7	2.4	26.3	65.2	82.5
	Eisenhower MS	8.1	0.9	23.1	63.9	80.5
	Hoover MS	30.2	3.0	37.8	45.1	64.8
	Madison MS	25.0	4.6	39.4	42.5	62.4
	Roosevelt MS	26.4	1.3	31.2	53.8	80.0

¹ FRPM, student eligibility for free or reduced priced meals, a proxy measure for poverty

² ELL, English language learners

³ UPM, underperforming minorities, ethnic groups that often score less than Whites on standardized assessments: African American, Hispanic, Native American

⁴ All students group from New Mexico Public Education Department AYP Report (adequate yearly progress)

Proficiency by School All FAY Students 2007 - 2008

StatPeers Group	School	FRPM ¹ % 2007-08	ELL ² % 2007-08	UPE ³ % 2007-08	Math % proficient ⁴ SBA 2008	Reading % proficient ⁴ SBA 2008
12	Albuquerque HS	38.4	17.3	81.0	40.9	48.3
	Del Norte HS	32.3	8.1	66.7	48.4	59.9
	Highland HS	51.3	22.1	77.0	28.5	49.8
	Rio Grande HS	63.7	24.7	92.5	22.0	46.4
	Valley HS	28.7	7.8	82.4	32.0	56.1
	West Mesa HS	52.2	18.6	90.9	17.4	42.8
13	Cibola HS	14.8	2.0	48.9	55.3	67.8
	Eldorado HS	9.4	1.7	26.7	63.7	78.3
	La Cueva HS	5.4	1.1	23.2	80.7	85.9
	Manzano HS	28.3	4.9	46.2	48.3	62.5
	Sandia HS	16.7	2.2	39.4	67.7	72.7
	Volcano Vista HS	18.7	1.9	58.0	no data	no data

¹ FRPM, student eligibility for free or reduced priced meals, a proxy measure for poverty

² ELL, English language learners

³ UPM, underperforming minorities, ethnic groups that often score less than Whites on standardized assessments: African American, Hispanic, Native American

⁴ All students group from New Mexico Public Education Department AYP Report (adequate yearly progress)

Cumulative Proficiency by School All FAY Students 2005 - 2008

Table 2. 2008 Statistical Peers NMSBA Math & Reading Performance – 2005 - 2008

Stat- Peers 2008	School	Math %	Math %	Math %	Math %	Reading %	Reading %	Reading %	Reading %
		proficient ¹ SBA 2005	proficient ¹ SBA 2006	proficient ¹ SBA 2007	proficient ¹ SBA 2008	proficient ¹ SBA 2005	proficient ¹ SBA 2006	proficient ¹ SBA 2007	proficient ¹ SBA 2008
1	Adobe Acres ES	28.5	27.8	38.7	43.1	39.3	31.4	35.1	41.4
	Armijo ES	36.0	45.2	52.5	35.7	42.7	45.9	53.1	41.9
	East San Jose ES	44.4	44.9	28.8	39.3	51.9	49.3	48.0	43.4
	Emerson ES	23.8	25.0	30.4	25.3	40.1	27.6	32.9	30.1
	Eugene Field ES	64.8	47.8	52.6	41.9	55.4	50.4	44.8	42.4
	La Mesa ES	39.8	49.1	41.6	40.5	35.8	37.8	42.5	40.5
	Lavaland ES	7.7	11.0	18.9	22.8	28.7	26.8	34.4	32.2
	Mountain View ES	43.9	43.0	36.7	26.3	52.8	57.0	45.0	39.0
	Wherry ES	9.2	9.6	13.9	18.9	33.3	20.8	20.8	23.1
2	Alamosa ES	25.7	42.1	37.0	30.7	33.5	48.5	49.2	40.7
	Atrisco ES	18.5	39.5	40.2	29.3	43.1	55.7	50.0	45.9
	Barcelona ES	23.0	31.1	35.0	31.3	40.3	37.9	40.9	40.8
	Carlos Rey ES	15.4	25.6	32.6	34.6	32.9	40.5	53.1	42.4
	Dolores Gonzales ES	38.2	35.7	48.1	54.1	43.0	44.0	58.3	53.5
	Duranes ES	33.8	35.0	28.8	21.7	47.1	42.7	37.3	30.0
	Edward Gonzales ES	23.5	25.3	25.7	31.0	34.1	34.2	34.7	38.0
	Hawthorne ES	31.5	35.8	30.1	29.0	42.3	41.9	35.0	35.0
	Kirtland ES	59.8	52.3	25.0	38.6	63.3	62.5	42.9	46.6
	Kit Carson ES	19.9	15.4	20.9	19.9	29.7	31.9	33.8	33.5
	La Luz ES	30.6	28.9	23.2	26.9	42.4	34.2	24.7	34.6
	Los Padillas ES	26.2	24.6	28.0	22.6	39.3	40.7	39.2	33.0
	Lowell ES	48.1	23.8	16.5	9.2	51.0	30.7	37.9	28.4
	Mary Ann Binford ES	40.3	54.4	41.8	33.7	49.5	70.6	59.2	47.1
	Navajo ES	25.6	28.1	28.9	37.6	40.5	42.2	39.8	48.0
Valle Vista ES	16.0	13.9	14.1	25.0	21.6	25.1	26.0	30.9	
Whittier ES	39.8	40.6	22.7	16.2	38.6	50.0	40.0	42.3	

¹ All students group from New Mexico Public Education Department AYP Report (Adequate Yearly Progress)

Cumulative Proficiency by School All FAY Students 2005 - 2008

Stat-Peers 2008	School	Math % proficient ¹ SBA 2005	Math % proficient ¹ SBA 2006	Math % proficient ¹ SBA 2007	Math % proficient ¹ SBA 2008	Reading % proficient ¹ SBA 2005	Reading % proficient ¹ SBA 2006	Reading % proficient ¹ SBA 2007	Reading % proficient ¹ SBA 2008
3	Alameda ES	24.5	44.5	57.5	51.3	53.2	52.0	65.0	61.2
	Cochiti ES	33.8	30.7	25.9	20.0	64.0	61.4	55.3	58.8
	Hodgin ES	34.7	34.0	30.9	30.5	48.2	52.2	59.7	61.1
	Lew Wallace ES	49.5	46.7	42.6	29.3	62.4	65.4	63.4	63.8
	Longfellow ES	36.3	34.2	37.2	35.3	51.3	53.7	57.2	60.7
	Los Ranchos ES	30.7	33.9	34.0	37.3	52.8	48.8	48.7	49.1
	MacArthur ES	36.3	45.9	35.6	37.1	50.0	63.5	55.6	44.3
	Mission Avenue ES	23.0	36.2	40.6	54.5	45.9	53.9	44.8	56.0
	Painted Sky ES	46.4	42.7	50.9	50.0	53.6	57.6	65.0	58.3
	Pajarito ES	24.4	18.5	20.8	14.3	41.3	33.2	40.5	28.6
	Reginald Chavez ES	43.5	26.5	26.8	32.6	51.7	39.0	41.8	48.2
	Susie Rayos Marmon ES	24.3	23.6	33.0	22.6	53.4	50.0	51.3	46.7
Tomasita ES	34.5	26.5	29.5	27.9	51.5	47.1	51.2	47.7	
4	Alvarado ES	35.3	45.8	47.1	39.3	54.3	60.1	57.3	54.6
	Bel-Air ES	22.6	28.1	28.9	26.0	54.2	39.2	47.4	46.2
	Chaparral ES	23.9	33.9	29.0	38.1	54.2	61.9	61.9	59.7
	Eubank ES	12.5	34.3	33.3	37.1	34.2	45.4	53.0	46.9
	Governor Bent ES	44.0	48.9	47.3	40.1	68.5	62.2	62.8	58.2
	Griegos ES	72.4	72.1	71.8	75.5	76.4	78.7	79.8	79.6
	Mark Twain ES	32.9	31.8	42.1	28.8	55.1	56.8	62.7	58.0
	McCollum ES	48.6	50.0	51.2	41.5	69.2	65.2	72.1	59.9
	Montezuma ES	34.8	39.6	37.3	33.2	50.6	54.7	51.9	51.7

¹ All students group from New Mexico Public Education Department AYP Report (Adequate Yearly Progress)

Cumulative Proficiency by School All FAY Students 2005 - 2008

Stat-Peers 2008	School	Math % proficient ¹ SBA 2005	Math % proficient ¹ SBA 2006	Math % proficient ¹ SBA 2007	Math % proficient ¹ SBA 2008	Reading % proficient ¹ SBA 2005	Reading % proficient ¹ SBA 2006	Reading % proficient ¹ SBA 2007	Reading % proficient ¹ SBA 2008
5	A. Montoya ES	37.7	41.1	50.0	37.8	64.8	55.6	61.4	57.8
	Acoma ES	50.0	46.7	39.2	34.9	69.7	64.8	60.8	67.0
	Apache ES	50.9	46.2	55.1	44.4	69.6	62.1	66.9	67.0
	Arroyo del Oso ES	41.2	48.9	53.4	60.9	63.3	70.6	76.7	76.2
	Bellehaven ES	46.6	40.9	42.4	43.1	68.2	56.1	57.0	56.3
	Chelwood ES	39.4	29.8	29.5	33.7	60.8	47.0	47.2	50.3
	Collet Park ES	48.2	46.7	52.7	45.4	65.5	65.0	65.9	67.1
	Edmund G. Ross ES	26.2	39.0	41.8	38.9	63.3	63.0	60.7	61.8
	Inez ES	60.7	58.2	52.2	42.0	73.6	64.6	69.2	61.7
	Manzano Mesa ES	29.9	30.2	36.3	48.4	55.8	43.0	52.1	60.6
	Matheson Park ES	37.9	39.3	38.1	38.0	52.0	54.1	55.1	57.4
	Mitchell ES	42.6	60.8	62.6	61.8	69.6	72.3	71.3	68.5
	Sandia Base ES	21.0	22.9	34.0	24.1	44.4	43.4	54.6	45.8
	Sierra Vista ES	39.2	39.0	41.6	50.6	66.5	61.1	63.0	63.2
	Sombra del Monte ES	37.8	46.9	47.6	35.6	57.0	59.3	64.9	63.4
	Zia ES	39.0	42.5	50.0	49.4	57.2	62.1	63.4	65.0
Zuni ES	42.9	51.3	40.7	34.2	68.0	69.5	61.3	59.4	

¹ All students group from New Mexico Public Education Department AYP Report (Adequate Yearly Progress)

Cumulative Proficiency by School All FAY Students 2005 - 2008

Stat-Peers 2008	School	Math % proficient ¹ SBA 2005	Math % proficient ¹ SBA 2006	Math % proficient ¹ SBA 2007	Math % proficient ¹ SBA 2008	Reading % proficient ¹ SBA 2005	Reading % proficient ¹ SBA 2006	Reading % proficient ¹ SBA 2007	Reading % proficient ¹ SBA 2008
6	Bandelier ES	60.7	54.7	55.1	54.8	77.6	71.9	70.3	68.8
	Chamiza ES	56.1	61.7	62.7	62.5	75.6	77.8	78.4	76.9
	Comanche ES	62.0	62.4	59.8	57.2	80.4	75.6	76.1	70.6
	Corrales ES	52.0	65.9	58.7	64.7	76.6	76.9	73.6	79.4
	John Baker ES	55.2	62.9	67.6	61.0	76.5	78.1	81.2	75.1
	Marie Hughes ES	39.7	47.0	49.1	48.1	67.7	68.2	74.2	73.7
	Monte Vista ES	58.4	63.2	66.2	60.6	76.1	73.7	79.8	74.9
	Oñate ES	53.6	56.9	52.6	58.0	79.2	77.4	75.4	70.0
	Osuna ES	61.3	64.7	72.4	57.7	83.9	80.4	79.0	74.2
	Petroglyph ES	48.5	51.2	48.5	56.6	67.7	66.8	69.1	70.9
	Seven Bar ES	46.3	44.7	45.4	53.6	68.3	65.9	72.1	70.5
	Tierra Antigua ES	no data	no data	no data	51.2	no data	no data	no data	60.4
	Ventana Ranch ES	38.9	46.3	52.8	53.7	64.3	67.1	68.5	72.8
7	Dennis Chavez ES	74.1	77.4	79.9	75.1	88.0	87.6	88.9	84.7
	Double Eagle ES	74.9	77.6	78.4	76.9	84.6	88.1	86.7	90.1
	Georgia O'Keeffe ES	69.0	78.8	80.5	74.3	86.4	86.7	91.6	88.7
	Hubert H. Humphrey ES	75.2	76.8	77.7	77.7	85.1	89.0	85.3	83.8
	North Star ES	no data	no data	75.3	76.7	no data	no data	88.0	85.5
	S.Y. Jackson ES	69.4	72.9	69.2	70.2	84.3	83.2	86.2	80.8
	San Antonito ES	65.7	75.2	82.2	81.0	86.4	86.1	82.2	84.7
8	Ernie Pyle MS	9.8	15.7	14.5	19.8	32.2	29.3	32.0	33.7
	Harrison MS	7.6	10.6	8.1	19.0	29.0	28.7	34.6	43.7
	Hayes MS	15.4	15.3	11.9	11.8	33.6	31.6	38.0	40.3
	Polk MS	8.2	9.9	6.8	9.4	28.0	29.0	30.6	27.9
	Truman MS	9.9	10.5	18.2	22.6	29.7	23.7	36.9	41.4
	Van Buren MS	8.6	11.2	17.5	14.3	40.5	25.5	39.3	41.5
	Washington MS	6.2	10.9	14.4	22.6	31.7	36.3	38.9	43.0

¹ All students group from New Mexico Public Education Department AYP Report (Adequate Yearly Progress)

Cumulative Proficiency by School All FAY Students 2005 - 2008

Stat-Peers 2008	School	Math % proficient ¹ SBA 2005	Math % proficient ¹ SBA 2006	Math % proficient ¹ SBA 2007	Math % proficient ¹ SBA 2008	Reading % proficient ¹ SBA 2005	Reading % proficient ¹ SBA 2006	Reading % proficient ¹ SBA 2007	Reading % proficient ¹ SBA 2008
9	Adams MS	9.3	8.5	9.1	12.3	34.7	29.8	32.1	41.7
	Garfield MS	9.4	11.4	12.8	19.5	36.3	36.6	41.7	47.2
	Jimmy Carter MS	16.0	13.1	14.8	21.3	32.1	38.1	42.2	45.5
	Kennedy MS	17.8	18.6	23.3	23.5	46.0	41.4	48.3	44.1
	McKinley MS	18.5	21.2	22.1	28.1	43.0	35.0	38.4	45.3
	Taft MS	20.3	22.0	19.2	23.6	49.9	54.2	48.0	54.3
	Wilson MS	15.7	17.2	16.1	22.2	37.5	36.3	33.5	46.0
10	Cleveland MS	36.6	35.1	38.7	43.9	64.3	54.4	56.3	67.6
	Grant MS	22.2	23.4	26.1	30.1	45.2	46.5	56.0	51.9
	Jackson MS	33.1	32.8	28.7	33.6	62.3	52.1	47.7	53.0
	James Monroe MS	41.0	no data	43.6	44.9	58.0	56.4	60.1	57.9
	Jefferson MS	37.5	41.7	44.2	53.2	59.7	62.3	65.0	69.0
	Johnson MS	39.8	37.0	36.0	43.6	72.2	65.1	64.5	70.2
	Taylor MS	35.1	34.7	36.2	42.9	53.9	50.5	50.7	59.8
11	Desert Ridge MS	67.0	67.6	64.6	65.2	83.6	79.2	79.4	82.5
	Eisenhower MS	48.9	59.7	58.0	63.9	80.7	75.2	79.2	80.5
	Hoover MS	40.4	40.4	44.1	45.1	62.5	60.1	52.2	64.8
	Madison MS	37.1	38.6	41.8	42.5	58.5	60.8	55.7	62.4
	Roosevelt MS	32.5	36.2	38.0	53.8	65.9	65.9	68.0	80.0

¹ All students group from New Mexico Public Education Department AYP Report (Adequate Yearly Progress)

Cumulative Proficiency by School All FAY Students 2005 - 2008

Stat-Peers 2008	School	Math % proficient ¹ SBA 2005	Math % proficient ¹ SBA 2006	Math % proficient ¹ SBA 2007	Math % proficient ¹ SBA 2008	Reading % proficient ¹ SBA 2005	Reading % proficient ¹ SBA 2006	Reading % proficient ¹ SBA 2007	Reading % proficient ¹ SBA 2008
12	Albuquerque HS	28.8	29.3	37.2	40.9	41.8	44.0	44.7	48.3
	Del Norte HS	36.5	32.1	33.7	48.4	52.7	51.7	42.0	59.9
	Highland HS	29.1	20.9	20.7	28.5	44.7	37.1	34.6	49.8
	Rio Grande HS	11.9	16.3	21.3	22.0	28.2	27.8	21.5	46.4
	Valley HS	30.1	29.8	30.3	32.0	50.0	51.4	47.4	56.1
	West Mesa HS	17.5	16.6	17.5	17.4	32.9	31.8	31.2	42.8
13	Cibola HS	58.6	44.7	57.0	55.3	73.5	58.9	62.5	67.8
	Eldorado HS	66.3	56.5	68.0	63.7	78.9	70.3	72.1	78.3
	La Cueva HS	78.2	74.8	78.7	80.7	83.4	85.2	82.1	85.9
	Manzano HS	45.5	46.5	48.0	48.3	60.6	59.3	54.8	62.5
	Sandia HS	55.9	56.2	58.2	67.7	69.4	68.2	65.7	72.7
	Volcano Vista HS	no data	no data	no data	no data	no data	no data	no data	no data

¹ All students group from New Mexico Public Education Department AYP Report (Adequate Yearly Progress)

Percent Proficient Gain All FAY Students 2005 - 2008

Table 3. 2008 Statistical Peers NMSBA Math & Reading Performance Gain– 2007 - 2008

Stat-Peers 2008	School	Math % proficient ¹ SBA 2007	Math % proficient ¹ SBA 2008	Math Gain 2007 - 2008	Reading % proficient ¹ SBA 2007	Reading % proficient ¹ SBA 2008	Reading percentage point Gain 2007 - 2008
1	Adobe Acres ES	38.7	43.1	4.4	35.1	41.4	6.3
	Armijo ES	52.5	35.7	(16.8)	53.1	41.9	(11.2)
	East San Jose ES	28.8	39.3	10.5	48	43.4	(4.6)
	Emerson ES	30.4	25.3	(5.1)	32.9	30.1	(2.8)
	Eugene Field ES	52.6	41.9	(10.7)	44.8	42.4	(2.4)
	La Mesa ES	41.6	40.5	(1.1)	42.5	40.5	(2.0)
	Lavaland ES	18.9	22.8	3.9	34.4	32.2	(2.2)
	Mountain View ES	36.7	26.3	(10.4)	45	39	(6.0)
Wherry ES	13.9	18.9	5.0	20.8	23.1	2.3	
2	Alamosa ES	37	30.7	(6.3)	49.2	40.7	(8.5)
	Atrisco ES	40.2	29.3	(10.9)	50	45.9	(4.1)
	Barcelona ES	35	31.3	(3.7)	40.9	40.8	(0.1)
	Carlos Rey ES	32.6	34.6	2.0	53.1	42.4	(10.7)
	Dolores Gonzales ES	48.1	54.1	6.0	58.3	53.5	(4.8)
	Duranes ES	28.8	21.7	(7.1)	37.3	30	(7.3)
	Edward Gonzales ES	25.7	31	5.3	34.7	38	3.3
	Hawthorne ES	30.1	29	(1.1)	35	35	0.0
	Kirtland ES	25	38.6	13.6	42.9	46.6	3.7
	Kit Carson ES	20.9	19.9	(1.0)	33.8	33.5	(0.3)
	La Luz ES	23.2	26.9	3.7	24.7	34.6	9.9
	Los Padillas ES	28	22.6	(5.4)	39.2	33	(6.2)
	Lowell ES	16.5	9.2	(7.3)	37.9	28.4	(9.5)
	Mary Ann Binford	41.8	33.7	(8.1)	59.2	47.1	(12.1)
	Navajo ES	28.9	37.6	8.7	39.8	48	8.2
Valle Vista ES	14.1	25	10.9	26	30.9	4.9	
Whittier ES	22.7	16.2	(6.5)	40	42.3	2.3	
3	Alameda ES	57.5	51.3	(6.2)	65	61.2	(3.8)
	Cochiti ES	25.9	20	(5.9)	55.3	58.8	3.5
	Hodgin ES	30.9	30.5	(0.4)	59.7	61.1	1.4
	Lew Wallace ES	42.6	29.3	(13.3)	63.4	63.8	0.4
	Longfellow ES	37.2	35.3	(1.9)	57.2	60.7	3.5
	Los Ranchos ES	34	37.3	3.3	48.7	49.1	0.4
	MacArthur ES	35.6	37.1	1.5	55.6	44.3	(11.3)
	Mission Avenue ES	40.6	54.5	13.9	44.8	56	11.2
	Painted Sky ES	50.9	50	(0.9)	65	58.3	(6.7)
	Pajarito ES	20.8	14.3	(6.5)	40.5	28.6	(11.9)
	Reginald Chavez ES	26.8	32.6	5.8	41.8	48.2	6.4
S. R. Marmon ES	33	22.6	(10.4)	51.3	46.7	(4.6)	
Tomasita ES	29.5	27.9	(1.6)	51.2	47.7	(3.5)	

¹ All students group from New Mexico Public Education Department AYP Report (Adequate Yearly Progress)

Percent Proficient Gain All FAY Students 2005 - 2008

Stat- Peers 2008	School	Math % proficient ¹ SBA 2007	Math % proficient ¹ SBA 2008	Math Gain 2007 - 2008	Reading % proficient ¹ SBA 2007	Reading % proficient ¹ SBA 2008	Reading percentage point Gain 2007 - 2008
4	Alvarado ES	47.1	39.3	(7.8)	57.3	54.6	(2.7)
	Bel-Air ES	28.9	26	(2.9)	47.4	46.2	(1.2)
	Chaparral ES	29	38.1	9.1	61.9	59.7	(2.2)
	Eubank ES	33.3	37.1	3.8	53	46.9	(6.1)
	Governor Bent ES	47.3	40.1	(7.2)	62.8	58.2	(4.6)
	Griegos ES	71.8	75.5	3.7	79.8	79.6	(0.2)
	Mark Twain ES	42.1	28.8	(13.3)	62.7	58	(4.7)
	McCollum ES	51.2	41.5	(9.7)	72.1	59.9	(12.2)
	Montezuma ES	37.3	33.2	(4.1)	51.9	51.7	(0.2)
5	A. Montoya ES	50	37.8	(12.2)	61.4	57.8	(3.6)
	Acoma ES	39.2	34.9	(4.3)	60.8	67	6.2
	Apache ES	55.1	44.4	(10.7)	66.9	67	0.1
	Arroyo del Oso ES	53.4	60.9	7.5	76.7	76.2	(0.5)
	Bellehaven ES	42.4	43.1	0.7	57	56.3	(0.7)
	Chelwood ES	29.5	33.7	4.2	47.2	50.3	3.1
	Collet Park ES	52.7	45.4	(7.3)	65.9	67.1	1.2
	Edmund G. Ross ES	41.8	38.9	(2.9)	60.7	61.8	1.1
	Inez ES	52.2	42	(10.2)	69.2	61.7	(7.5)
	Manzano Mesa ES	36.3	48.4	12.1	52.1	60.6	8.5
	Matheson Park ES	38.1	38	(0.1)	55.1	57.4	2.3
	Mitchell ES	62.6	61.8	(0.8)	71.3	68.5	(2.8)
	Sandia Base ES	34	24.1	(9.9)	54.6	45.8	(8.8)
	Sierra Vista ES	41.6	50.6	9.0	63	63.2	0.2
Sombra del Monte	47.6	35.6	(12.0)	64.9	63.4	(1.5)	
Zia ES	50	49.4	(0.6)	63.4	65	1.6	
Zuni ES	40.7	34.2	(6.5)	61.3	59.4	(1.9)	
6	Bandelier ES	55.1	54.8	(0.3)	70.3	68.8	(1.5)
	Chamiza ES	62.7	62.5	(0.2)	78.4	76.9	(1.5)
	Comanche ES	59.8	57.2	(2.6)	76.1	70.6	(5.5)
	Corrales ES	58.7	64.7	6.0	73.6	79.4	5.8
	John Baker ES	67.6	61	(6.6)	81.2	75.1	(6.1)
	Marie Hughes ES	49.1	48.1	(1.0)	74.2	73.7	(0.5)
	Monte Vista ES	66.2	60.6	(5.6)	79.8	74.9	(4.9)
	Oñate ES	52.6	58	5.4	75.4	70	(5.4)
	Osuna ES	72.4	57.7	(14.7)	79	74.2	(4.8)
	Petroglyph ES	48.5	56.6	8.1	69.1	70.9	1.8
	Seven Bar ES	45.4	53.6	8.2	72.1	70.5	(1.6)
	Tierra Antigua ES	no data	51.2	no data	no data	60.4	no data
Ventana Ranch ES	52.8	53.7	0.9	68.5	72.8	4.3	

¹ All students group from New Mexico Public Education Department AYP Report (Adequate Yearly Progress)

Percent Proficient Gain All FAY Students 2005 - 2008

Stat-Peers 2008	School	Math % proficient ¹ SBA 2007	Math % proficient ¹ SBA 2008	Math Gain 2007 - 2008	Reading % proficient ¹ SBA 2007	Reading % proficient ¹ SBA 2008	Reading percentage point Gain 2007 - 2008
7	Dennis Chavez ES	79.9	75.1	(4.8)	88.9	84.7	(4.2)
	Double Eagle ES	78.4	76.9	(1.5)	86.7	90.1	3.4
	Georgia O'Keeffe ES	80.5	74.3	(6.2)	91.6	88.7	(2.9)
	H. H. Humphrey ES	77.7	77.7	0.0	85.3	83.8	(1.5)
	North Star ES	75.3	76.7	1.4	88	85.5	(2.5)
	S. Y. Jackson ES	69.2	70.2	1.0	86.2	80.8	(5.4)
	San Antonito ES	82.2	81	(1.2)	82.2	84.7	2.5
8	Ernie Pyle MS	14.5	19.8	5.3	32	33.7	1.7
	Harrison MS	8.1	19	10.9	34.6	43.7	9.1
	Hayes MS	11.9	11.8	(0.1)	38	40.3	2.3
	Polk MS	6.8	9.4	2.6	30.6	27.9	(2.7)
	Truman MS	18.2	22.6	4.4	36.9	41.4	4.5
	Van Buren MS	17.5	14.3	(3.2)	39.3	41.5	2.2
	Washington MS	14.4	22.6	8.2	38.9	43	4.1
9	Adams MS	9.1	12.3	3.2	32.1	41.7	9.6
	Garfield MS	12.8	19.5	6.7	41.7	47.2	5.5
	Jimmy Carter MS	14.8	21.3	6.5	42.2	45.5	3.3
	Kennedy MS	23.3	23.5	0.2	48.3	44.1	(4.2)
	McKinley MS	22.1	28.1	6.0	38.4	45.3	6.9
	Taft MS	19.2	23.6	4.4	48	54.3	6.3
	Wilson MS	16.1	22.2	6.1	33.5	46	12.5
10	Cleveland MS	38.7	43.9	5.2	56.3	67.6	11.3
	Grant MS	26.1	30.1	4.0	56	51.9	(4.1)
	Jackson MS	28.7	33.6	4.9	47.7	53	5.3
	James Monroe MS	43.6	44.9	1.3	60.1	57.9	(2.2)
	Jefferson MS	44.2	53.2	9.0	65	69	4.0
	Johnson MS	36	43.6	7.6	64.5	70.2	5.7
	Taylor MS	36.2	42.9	6.7	50.7	59.8	9.1
11	Desert Ridge MS	64.6	65.2	0.6	79.4	82.5	3.1
	Eisenhower MS	58	63.9	5.9	79.2	80.5	1.3
	Hoover MS	44.1	45.1	1.0	52.2	64.8	12.6
	Madison MS	41.8	42.5	0.7	55.7	62.4	6.7
	Roosevelt MS	38	53.8	15.8	68	80	12.0

¹ All students group from New Mexico Public Education Department AYP Report (Adequate Yearly Progress)

Percent Proficient Gain All FAY Students 2005 - 2008

Stat- Peers 2008	School	Math % proficient ¹ SBA 2007	Math % proficient ¹ SBA 2008	Math Gain 2007 - 2008	Reading % proficient ¹ SBA 2007	Reading % proficient ¹ SBA 2008	Reading percentage point Gain 2007 - 2008
12	Albuquerque HS	37.2	40.9	3.7	44.7	48.3	3.6
	Del Norte HS	33.7	48.4	14.7	42	59.9	17.9
	Highland HS	20.7	28.5	7.8	34.6	49.8	15.2
	Rio Grande HS	21.3	22	0.7	21.5	46.4	24.9
	Valley HS	30.3	32	1.7	47.4	56.1	8.7
	West Mesa HS	17.5	17.4	(0.1)	31.2	42.8	11.6
13	Cibola HS	57	55.3	(1.7)	62.5	67.8	5.3
	Eldorado HS	68	63.7	(4.3)	72.1	78.3	6.2
	La Cueva HS	78.7	80.7	2.0	82.1	85.9	3.8
	Manzano HS	48	48.3	0.3	54.8	62.5	7.7
	Sandia HS	58.2	67.7	9.5	65.7	72.7	7.0
	Volcano Vista HS	no data	no data	no data	no data	no data	no data

¹ All students group from New Mexico Public Education Department AYP Report (Adequate Yearly Progress)