



# RESEARCH BRIEF



PREPARED BY CURTIS J MEARNES PH.D.

JULY 2006

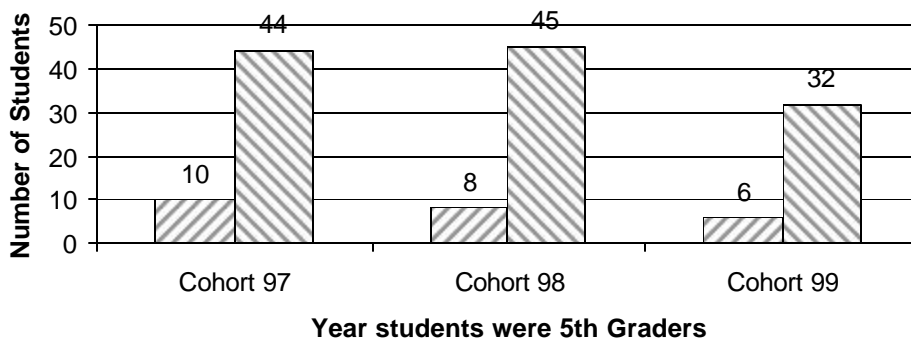
## Longfellow Student High School Graduation Rates

This report concludes research requested by community members located near Longfellow Elementary school. The community posed the question, how do Longfellow students fare in terms of graduation relative to the district? Generally, Longfellow students graduate at a slightly higher rate than the average district cohort (4 year) graduation rate. Additionally, the Longfellow students attending Albuquerque High School graduate on average seven percentage points above the district Average rate.

This report presents graduation rates based on entry into an APS high school and then graduation 4 years later. This is called a cohort graduation rate. The cohort graduation rate captures six different statuses of students: 1) graduation, 2) still enrolled, 3) transferred, 4) dropout, 5) expulsion, 6) death. In this study no students were expelled and no students died. For ease of presentation, these categories are not shown, but the reader should remember the numbers and percents for expulsion and death are zero. This study began with 5<sup>th</sup> grade Longfellow students and followed them through APS, to on time (4 year) graduation.

The figure below shows the number of students leaving Longfellow in 5<sup>th</sup> grade and whether or not they went to APS high schools.

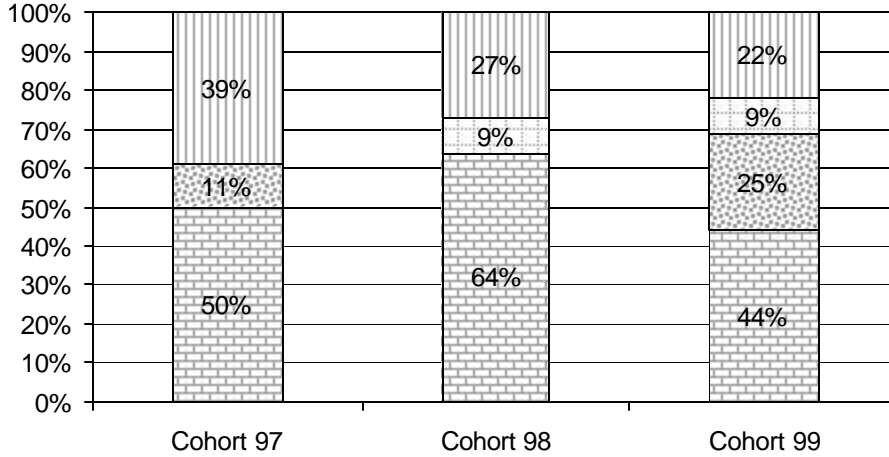
**Number of 5th Grade Longfellow Students**



☐ Not attending APS high school    ☐ Starting an APS high school

The next figure shows fifth grade Longfellow students of the year indicated, who entered APS high schools (last enrollment grade was greater than 8 or last withdrawal date was more recent than Aug 1 of 2000, 2001, 2002 respectively). Results fluctuate because of small sample sizes. However, the graduation rate across the years is 53.7% compared to APS 2003-04 rate of 52.9%.

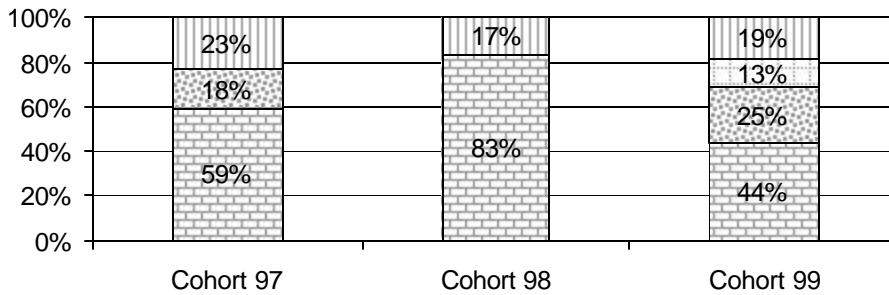
**Longfellow Students All High Schools\***



Graduated 
  Transferred out of district 
  Still Active 
  Dropout

When looking at Longfellow students who graduated from Albuquerque High School only, graduation rates fluctuate in the same manner as the district as a whole fluctuated. The average graduation rate of Longfellow students was 60%, seven percent above the district graduation average. The total number of Longfellow students entering ABQHS was 22, 12 and 16 for the 97, 98, and 99 school years respectively,

**Longfellow Students ABQ High School Only\***



Graduated 
  Transferred out of district 
  Still Active 
  Dropout

These results show that Longfellow students out-perform district graduation rates on average. Those Longfellow students attending Albuquerque High School on average graduate at a rate higher than the district as well.

\*Student outcome categories with values equal to zero do not appear in this graph.