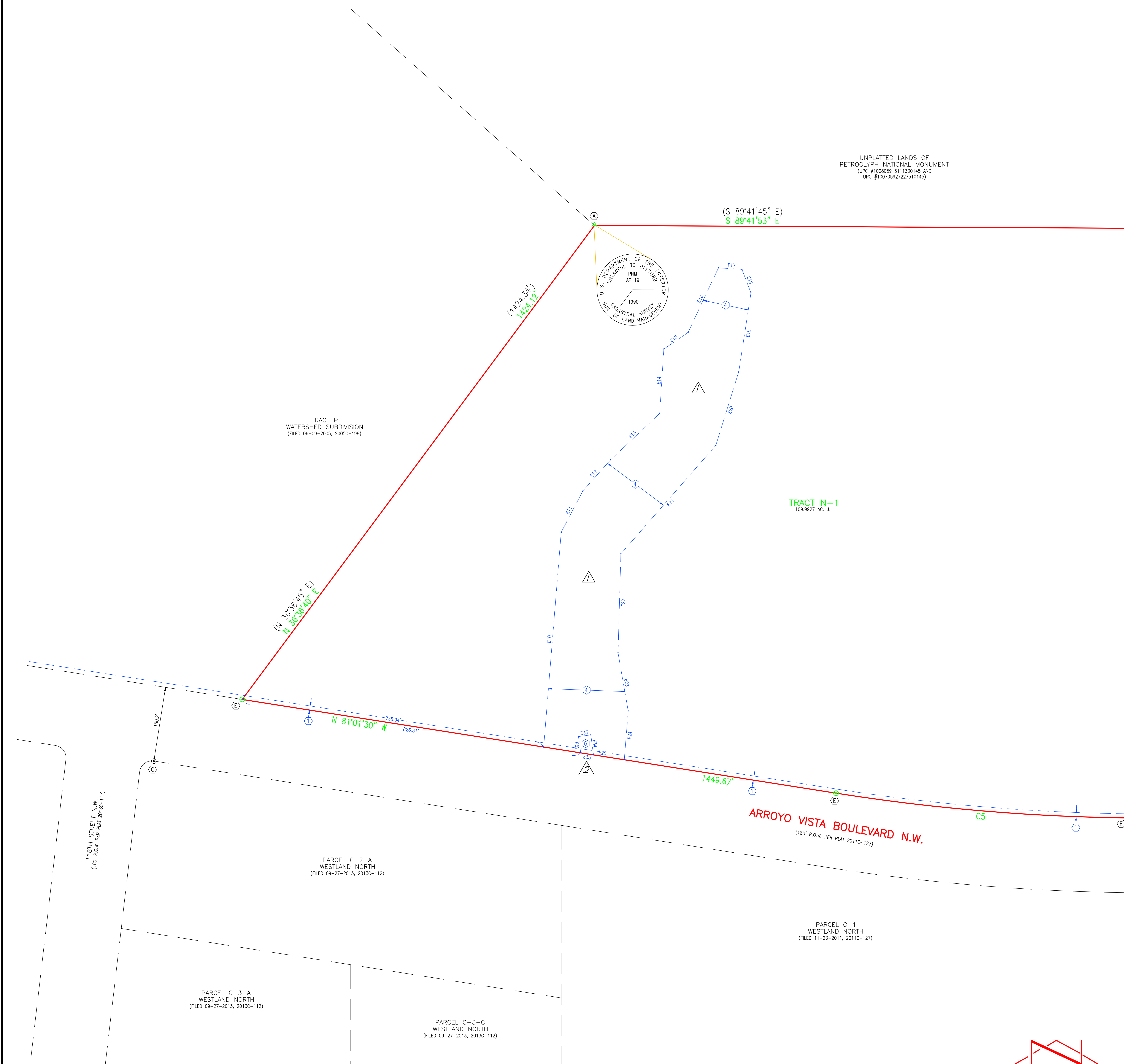
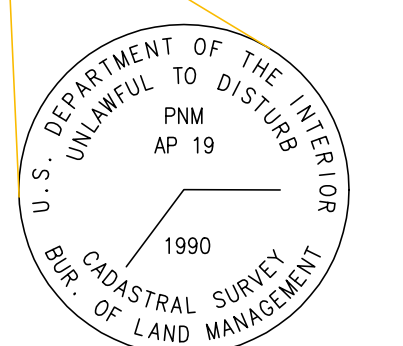


File Path: P:\01011\1418195\DRYTYL_R2.DWG | Plot Date: 01-08-2016
 File Name: 1418195DRYTYL_R2.DWG | Plot Time: 07:51 am

A1 BOUNDARY SURVEY
 SCALE: 1" = 100'



UNPLATTED LANDS OF
 PETROGLYPH NATIONAL MONUMENT
 UPC #10080591311330145 AND
 UPC #100705927227510145



HIGH MESA
 Consulting Group
 601-B MIDWAY PARK BLVD., NE
 ALBUQUERQUE, NEW MEXICO 87109
 PHONE: 505.345.4650 FAX: 505.345.4234
 www.highmesaeng.com



BOUNDARY TABLES

LINE	DIRECTION	DISTANCE
L1	N 00°15'47" E	206.75'
(L1)	N 00°18'17" E	206.78'
L2	N 81°03'35" W	146.64'

CURVE	RADIUS	LENGTH	CHORD	CHORD BEARING	DELTA
C1	2964.00'	291.39'	291.27'	S 49°01'42" W	05°37'58"
C2	1164.00'	502.84'	498.94'	S 33°50'10" W	24°45'05"
C3	100.00'	135.23'	125.16'	S 60°12'02" W	7°28'47"
C4	5090.00'	726.40'	725.69'	N 85°06'41" W	08°10'32"
C5	4922.00'	704.98'	704.38'	N 85°07'58" W	08°12'24"

EASEMENT TABLES

LINE	DIRECTION	DISTANCE
E1	N 51°09'03" W	400.00'
E2	N 56°21'52" W	150.00'
E3	N 62°29'05" W	150.00'
E4	N 71°29'58" W	150.00'
E5	N 85°04'35" W	150.00'
E6	N 88°41'20" W	150.00'
E7	N 78°58'47" W	150.00'
E8	N 66°08'55" W	75.00'
E9	N 49°43'21" W	278.33'
E10	N 04°39'48" E	519.65'
E11	N 27°37'41" E	112.01'
E12	N 41°39'11" E	100.96'
E13	N 46°36'49" E	163.14'
E14	N 07°59'43" E	155.61'
E15	N 55°49'24" E	70.32'
E16	N 25°11'51" E	172.46'
E17	S 86°47'06" E	56.75'
E18	S 20°54'29" E	60.98'

LINE	DIRECTION	DISTANCE
E19	S 08°46'16" W	192.08'
E20	S 17°16'56" W	186.34'
E21	S 41°11'16" W	347.74'
E22	S 01°38'18" W	238.82'
E23	S 09°54'37" E	142.28'
E24	S 04°34'44" W	118.10'
E25	N 81°01'30" W	196.81'
E26	N 46°12'43" E	279.80'
E27	N 43°47'17" W	15.00'
E28	N 46°12'43" E	30.00'
E29	S 43°47'17" E	55.00'
E30	N 43°47'17" W	10.00'
E31	S 46°12'43" W	279.80'
E32	N 07°45'09" W	39.63'
E33	N 82°14'51" E	30.00'
E34	S 07°45'09" E	48.65'
E35	N 81°01'30" W	31.33'

CURVE	RADIUS	LENGTH	CHORD	CHORD BEARING	DELTA
EC1	100.00'	43.35'	43.01'	N 33°52'47" E	25°50'09"
EC2	100.00'	48.18'	45.77'	S 59°31'33" W	26°27'52"
EC3	1204.00'	598.21'	592.08'	N 31°58'41" E	28°28'03"
EC4	1174.00'	549.17'	544.18'	S 32°48'40" W	26°48'06"

KEYED NOTES

- EASEMENTS
 - ① 10' PUBLIC UTILITY EASEMENT GRANTED BY PLAT 2000C-316
 - ② 50' FLOATING ACCESS EASEMENT FOR THE BENEFIT OF AMAFCA AND THE NATIONAL PARK SERVICE GRANTED BY PLAT 2000C-316. MAINTENANCE IS THE RESPONSIBILITY OF THE BENEFICIARIES.
- ⚠ AMAFCA DRAINAGE EASEMENT GRANTED BY DOCUMENT FILED 08-14-2012, DOC# 2012082560
- ⚠ CITY OF ALBUQUERQUE STORM DRAIN EASEMENT GRANTED BY DOCUMENT FILED 08-23-2012, DOC# 2012086552
- ⚠ CITY OF ALBUQUERQUE STORM DRAIN EASEMENT GRANTED BY DOCUMENT FILED 08-23-2012, DOC# 2012086553
- EASEMENT -- OFFSITE
 - ③ PUBLIC ACCESS AND PUBLIC DRAINAGE EASEMENT GRANTED TO THE CITY OF ALBUQUERQUE BY PLAT 2013C-116
- MONUMENTS
 - A FOUND BLM BRASS CAP STAMPED "PNM AP19, 1990", TAGGED W/WASHER STAMPED "NMPS 11184"
 - B FOUND BLM BRASS CAP STAMPED "PNM AP18, 1990", TAGGED W/WASHER STAMPED "NMPS 11184"
 - C FOUND #5 REBAR W/CAP STAMPED "PS 16469", TAGGED W/WASHER STAMPED "NMPS 11184"
 - D FOUND #5 REBAR, NO I.D., (BENT), UNDER SIDEWALK, REPLACED WITH CHISELED "+" ON CONCRETE SIDEWALK
 - E SET #5 REBAR W/CAP STAMPED "NEW MEXICO PS 11184"
 - F SET CHISELED "+" IN CONCRETE SIDEWALK

MATCH LINE -- FOR CONTINUATION SEE SHEET 3

TRACT N-1, WATERSHED SUBDIVISION
 WESTSIDE K-8 EDUCATIONAL SITE
 ALBUQUERQUE PUBLIC SCHOOLS

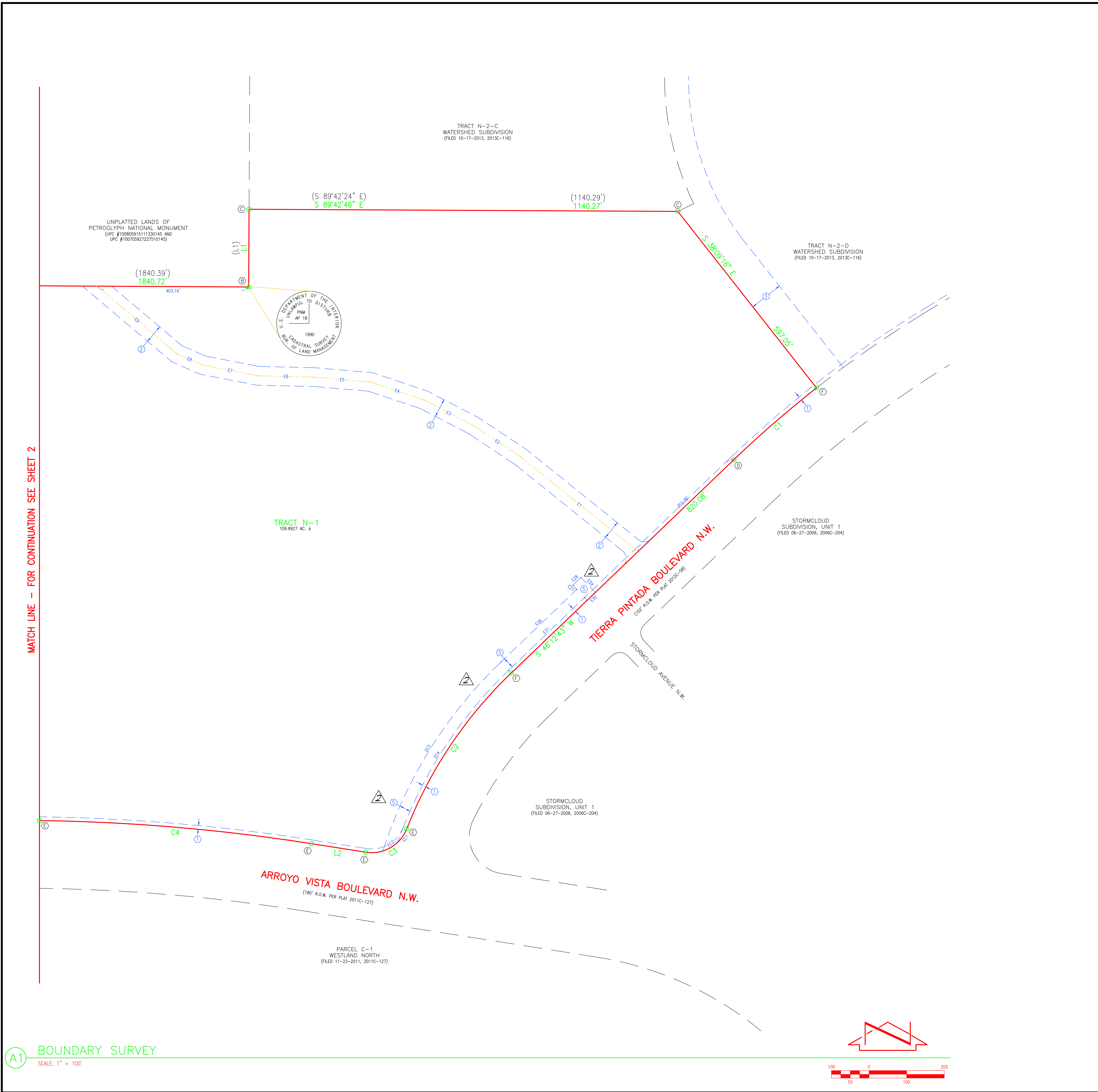
NO.	DATE	BY	REVISIONS
Δ	12/05	C.G.C.	ADDITION OF AMAFCA DRAINAGE EASEMENT
Δ	01/06	C.G.C.	ADDITION OF C.G.A. STORM DRAIN EASEMENTS AND REBAR THE SUBJECT PROPERTY

PROJECT No. 2014.181.9
 SURVEYED BY M.V.Z.
 DRAWN BY T.N.T.
 APPROVED BY C.G.C.
 SHEET TITLE

BOUNDARY SURVEY
 VF-102
 SHEET 2 OF 15



File Path: P:\000000\K0000000\K0000000.dwg | Plot Date: 01-08-2016
 File Name: 1418195DRY3_R2.DWG | Plot Time: 07:53 am



BOUNDARY TABLES

LINE	DIRECTION	DISTANCE
L1	N 00°15'47" E	206.75'
(L1)	N 00°18'17" E	206.78'
L2	N 81°03'35" W	146.64'

CURVE	RADIUS	LENGTH	CHORD	CHORD BEARING	DELTA
C1	2964.00'	291.39'	291.27'	S 49°01'42" W	05°37'58"
C2	1164.00'	502.84'	498.94'	S 33°50'10" W	24°45'05"
C3	100.00'	135.23'	125.16'	S 60°12'02" W	7°28'47"
C4	5090.00'	726.50'	725.69'	N 85°08'41" W	08°10'32"
C5	4922.00'	704.98'	704.38'	N 85°07'58" W	08°12'24"

EASEMENT TABLES

LINE	DIRECTION	DISTANCE
E1	N 51°09'03" W	400.00'
E2	N 56°21'52" W	150.00'
E3	N 62°29'05" W	150.00'
E4	N 71°29'58" W	150.00'
E5	N 85°04'35" W	150.00'
E6	N 88°41'20" W	150.00'
E7	N 78°58'47" W	150.00'
E8	N 66°08'55" W	75.00'
E9	N 49°43'21" W	278.33'
E10	N 04°39'48" E	519.65'
E11	N 27°37'41" E	112.01'
E12	N 41°39'11" E	100.96'
E13	N 46°36'49" E	163.14'
E14	N 07°59'43" E	155.61'
E15	N 55°49'24" E	70.32'
E16	N 25°11'51" E	172.46'
E17	S 86°47'06" E	56.75'
E18	S 20°54'29" E	60.98'

CURVE	RADIUS	LENGTH	CHORD	CHORD BEARING	DELTA
EC1	100.00'	43.35'	43.01'	N 33°52'47" E	25°50'00"
EC2	100.00'	48.18'	45.77'	S 59°31'33" W	26°27'52"
EC3	1204.00'	598.21'	592.08'	N 31°58'41" E	28°28'03"
EC4	1174.00'	549.17'	544.18'	S 32°48'40" W	26°48'06"

KEYED NOTES

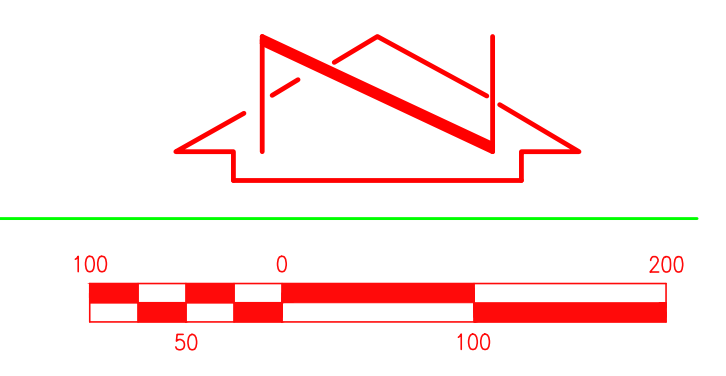
- EASEMENTS**
- ① 10' PUBLIC UTILITY EASEMENT GRANTED BY PLAT 2000C-316
 - ② 50' FLOATING ACCESS EASEMENT FOR THE BENEFIT OF AMAFCA AND THE NATIONAL PARK SERVICE GRANTED BY PLAT 2000C-316. MAINTENANCE IS THE RESPONSIBILITY OF THE BENEFICIARIES.
 - ③ AMAFCA DRAINAGE EASEMENT GRANTED BY DOCUMENT FILED 08-14-2012, DOC# 2012082560
 - ④ CITY OF ALBUQUERQUE STORM DRAIN EASEMENT GRANTED BY DOCUMENT FILED 08-23-2012, DOC# 2012086552
 - ⑤ CITY OF ALBUQUERQUE STORM DRAIN EASEMENT GRANTED BY DOCUMENT FILED 08-23-2012, DOC# 2012086553
- EASEMENT -- OFFSITE**
- ③ PUBLIC ACCESS AND PUBLIC DRAINAGE EASEMENT GRANTED TO THE CITY OF ALBUQUERQUE BY PLAT 2013C-1116
- MONUMENTS**
- Ⓐ FOUND BLM BRASS CAP STAMPED "PNM AP19, 1990", TAGGED W/WASHER STAMPED "NMPS 11184"
 - Ⓑ FOUND BLM BRASS CAP STAMPED "PNM AP18, 1990", TAGGED W/WASHER STAMPED "NMPS 11184"
 - Ⓒ FOUND #5 REBAR W/CAP STAMPED "PS 16469", TAGGED W/WASHER STAMPED "NMPS 11184"
 - Ⓓ FOUND #5 REBAR, NO I.D., (BENT), UNDER SIDEWALK, REPLACED WITH CHISELED "+" ON CONCRETE SIDEWALK
 - Ⓔ SET #5 REBAR W/CAP STAMPED "NEW MEXICO PS 11184"
 - Ⓕ SET CHISELED "+" IN CONCRETE SIDEWALK

HIGH MESA Consulting Group
 6010-B MIDWAY PARK BLVD. NE
 ALBUQUERQUE, NEW MEXICO 87109
 PHONE: 505.346.4650 FAX: 505.346.4634
 www.highmesaeng.com



**TRACT N-1, WATERSHED SUBDIVISION
 WESTSIDE K-8 EDUCATIONAL SITE
 ALBUQUERQUE PUBLIC SCHOOLS**

A1 BOUNDARY SURVEY
 SCALE: 1" = 100'



NO.	DATE	BY	REVISIONS
1	12/15	C.G.C.	ADDITION OF AMAFCA DRAINAGE EASEMENT
2	01/16	C.G.C.	ADDITION OF C.C.A. STORM DRAIN EASEMENTS AND REBAR TO SUBJECT PROPERTY

PROJECT No. 2014.181.9
 SURVEYED BY M.V.Z.
 DRAWN BY T.N.T.
 APPROVED BY C.G.C.
 SHEET TITLE

BOUNDARY SURVEY

VF-103
 SHEET 3 OF 15