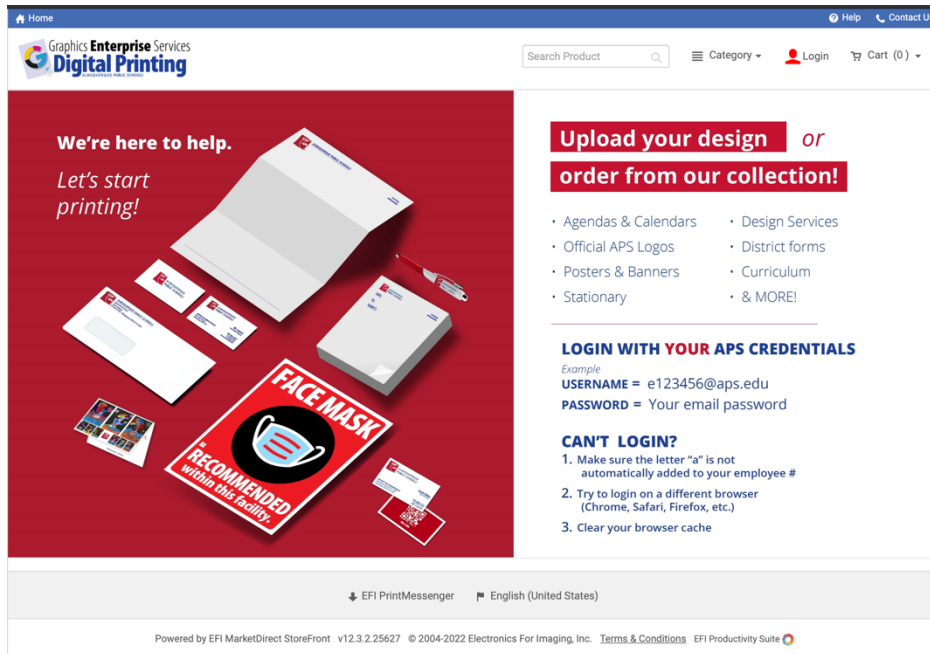


StoreFront Login Instructions for APS Employees

1. Once in storefront.aps.edu, click on red "Login" icon to begin.

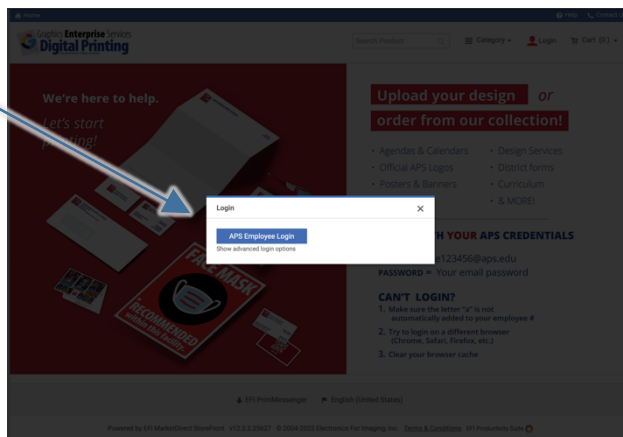


2. Storefront is tied into the APS Active Directory

If you are a first-time APS user, you will need to register. Simply click the blue "APS Employee Login" button.

You will then be prompted to enter your APS credentials. Your password is the same as your APS email password.

IMPORTANT: Make sure that the letter "a" is not automatically added to your employee# (this may occur to LAWSON administrators)... please delete the "a" before signing in.



If you have been to StoreFront before, the system should automatically log you in if you are using your APS assigned computer and selected to remember your login credentials.