



# **ALBUQUERQUE PUBLIC SCHOOLS**

Facilities Design + Construction / Maintenance & Operation

## **Playground Standards, Specifications and Standard Details for Playground Construction**

George Radnovich  
Thomas (Tag) Gay  
Patrick Gay  
Butch DeFillippo  
Jeffrey Mortensen  
Rick Leydig  
Annelle Darby  
Adam Hendrickson

## **Playground Equipment and Supervision Standards**

### **A. SUMMARY**

1. Albuquerque Public Schools (APS) has adopted as its playground safety standards, the most current editions of the U. S. Consumer Products Safety Commission's (CPSC) "Public Playground Safety Handbook"; ASTM International (ASTM) Standard F1487 for Standard Consumer Safety Performance Specification for Playground Equipment for Public Use; and the Americans with Disabilities Act (ADA) Accessibility Guidelines for Play Areas and the Americans with Disability Guideline for Buildings and Facilities. The purpose of this directive is to develop a comprehensive plan of action to comply with existing standards (CPSC and ASTM) and playground laws (ADA) to prevent accidents on playgrounds caused by known serious hazards that are correctable. To achieve that purpose, this directive will establish APS standards for playground equipment installation, maintenance, type of equipment used.

### **B. PLAYGROUND DESIGN – General**

1. All designs and drawings for playgrounds on APS properties must be reviewed and approved by the APS M&O Playgrounds prior to ordering and installing equipment.
2. Playground equipment and surfacing are required to be IPEMA Certified.
3. Modifications to existing playgrounds will require that surfacing, access, etc. be brought to current ADA requirements for playground accessibility. All existing playground equipment must be audited for safety by a certified person and all non-compliant equipment must be removed.

4. Access for maintenance is required with a minimum opening of 10'-0" clear for installation, **12'-0" is preferred.**
5. Provide a minimum of 8'-0" between playground walls and other items for tractor access.
6. All APS playgrounds are required to have engineered wood fiber mulch installed as the safety surfacing. Sand is no longer allowed as a safety surfacing. A separate sand play area without equipment is allowed. **Any surfacing besides engineered wood fiber must first be approved by Facilities Design and Construction, and the M&O Playground department.**
7. Utilities are not permitted to pass through, over or under play areas. This includes water, sanitary sewer, electrical, gas, communication cables, etc.
8. Surfaces adjacent to play areas must be paved or treated to control erosion and for ease of maintenance.
9. Absolutely no site drainage or roof drainage is allowed to enter playground or play equipment containment areas. Play equipment cannot be installed within ponding areas.
10. All new playgrounds and new equipment installed within existing playgrounds shall have an age appropriate sign(s) which is provided by the equipment manufacturer and installed by the equipment installer.
11. Any designated Pre-K play areas shall have an age appropriate tot lot and equipment that is totally fenced to create a separate lot for this age group separate from other play areas.
12. All permanent playground equipment must be installed within concrete borders with ADA compliant access.
13. All new play structures must include ADA accessible play equipment. Every playground must have an accessible path leading to the play area. New play equipment on established playgrounds must address the balance of ADA compliant equipment. ADA accessibility shall comply with the most current publication of "Guide to ADA Accessibility Guidelines for Play Areas" as published by the Architectural and Transportation Barriers Compliance Board.
14. For new play equipment, **ramped playground structures are preferred.** The playground design should take into account the needs of the particular school.
15. All playgrounds must include 2-3 trash receptacles designed for exterior use.

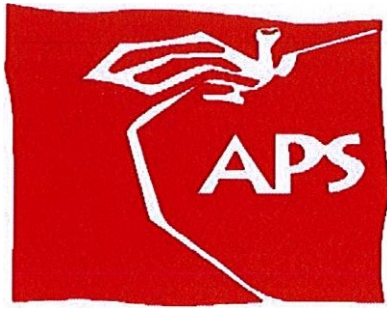
16. Arch swings are preferred. If single post swings, they must be clamp attached, and no more than 3 bays.
17. All hard surfacing leading from the maintenance gate to the playground must be traffic rated for M&O maintenance.
18. Wind and Erosion Control:
  - a. Hard surfacing around exterior of playground area.
  - b. Containment of wood fiber is required.
  - c. No surface drainage or roof drains into the play area.
  - d. Provide drainage out of the play area.
  - e. Minimize "pod" play areas. Make play areas larger instead of smaller areas.
  - f. Wind screens shall be installed on fencing in potential high wind areas
19. Equipment with built in shade structures, or shade structures over large pieces of equipment is preferred. All shade structures on APS property require sealed engineer drawings. Copies of building permits and an inspection record including the final inspection must be provided to APS.

## C. PLAYGROUND EQUIPMENT STANDARDS

1. All equipment shall be purchased from a playground equipment manufacturer with adequate product liability insurance. Manufacturers' representatives shall be a Certified Playground Safety Inspector (CPSI).
2. The International Playground Equipment Manufacturers Association (IPEMA) must certify all components of the purchased equipment.
3. Prohibited equipment
  - a. Any equipment that fails to meet either of the current CPSC and ASTM requirements.
  - b. Residential equipment.
  - c. Metal slides.
  - d. Wood equipment.
  - e. Trampolines (this does not include individual trampolines required by an Individual Education Plan (IEP), which are not for general use.
  - f. Tires of any size.
  - g. Stand up spinners may be considered but must be approved by the Playground Department supervisor.
4. Protective surfacing
  - a. APS shall maintain the protective surfacing in accordance with CPSC, ASTM and IPEMA requirements.
5. Installation standards
  - a. All equipment shall be installed according to manufacturer specifications and meet current industry safety standards.
  - b. When new equipment is to be placed on a playground the following procedures for installation will be followed:
    - 1) The installation must have on-site CPSI certified personnel to oversee the installation.
    - 2) No other organization or persons may install playground equipment on APS playgrounds without approval by APS personnel.
    - 3) Final Walkthrough Meeting at the completion of the Installation will include a meeting with key school personnel. The meeting should include information on how the school can conduct a team inspection and discuss how the play equipment is to be used.

#### D) AUDITS / INSPECTIONS / TRAINING

1. APS will provide third party safety audit of playgrounds based upon CPSC, ASTM, and ADA requirements. These will occur before any new equipment is added if the last audit is over five years old and after new equipment is installed.
2. Final payment of the installation will be approved upon completion of the safety audit.



# **ALBUQUERQUE PUBLIC SCHOOLS**

**Expect great things!**

## **INDEX OF DRAWINGS**

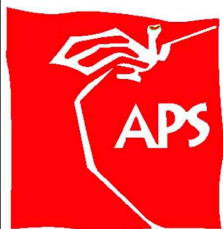
P-601	TYPICAL PLAY AREA CONFIGURATIONS
P-602	PLAYGROUND GENERAL NOTES
P-603	TYPICAL PLAY AREA CONTAINMENT WALL SECTIONS
P-604	TYPICAL PLAY AREA ACCESS RAMP DETAIL
P-605	TYPICAL PLAY AREA ACCESS RAMP SECTION A-A
P-606	TYPICAL PLAY AREA ACCESS RAMP SECTION B-B
P-607	TYPICAL PLAY AREA ACCESS RAMP @ CORNER DETAIL





**GENERAL NOTES:**

1. ALL PLAY AREA CONSTRUCTION SHALL COMPLY WITH THE NEW MEXICO STANDARD SPECIFICATIONS FOR PUBLIC WORKS CONSTRUCTION – 1987, PUBLISHED BY THE NEW MEXICO CHAPTER AMERICAN PUBLIC WORKS ASSOCIATION. (REVISED 12/06)
2. REFER TO ALBUQUERQUE PUBLIC SCHOOL FACILITIES DESIGN & CONSTRUCTION DEPARTMENT FOR ADA PLAYGROUND EQUIPMENT GUIDELINES. IF A CONFLICT EXISTS, THE MORE STRINGENT REQUIREMENTS SHALL GOVERN.
3. PLAY AREA DIMENSIONS SHALL AT A MINIMUM MEET PLAYGROUND EQUIPMENT MANUFACTURER’S USE/FALL ZONE CRITERIA WITH AN ADDITIONAL 1’ PREFERRED. COORDINATE WITH EQUIPMENT MANUFACTURER TO DETERMINE MANUFACTURER’S USE/FALL ZONE CRITERIA.
4. PLAYGROUND EQUIPMENT SHALL BE PRIOR APPROVED BY APS M&O PLAYGROUND DEPARTMENT AND FACILITIES DESIGN AND CONSTRUCTION.
5. EXISTING PLAYGROUND EQUIPMENT MUST BE AUDITED AND EVALUATED BY APS M&O PLAYGROUND DEPARTMENT AND FACILITIES DESIGN AND CONSTRUCTION PRIOR TO DESIGN AND/OR CONSTRUCTION.
6. ALL MODIFICATIONS TO EXISTING PLAY AREAS MUST BE COORDINATED WITH AND OBTAIN PRIOR APPROVAL FROM APS M&O PLAYGROUND DEPARTMENT AND FACILITIES DESIGN AND CONSTRUCTION.
7. ALL LANDINGS SHALL BE ADA COMPLIANT.
8. ALL SLOPES MUST BE ADA COMPLIANT.
9. ENGINEERED WOOD FIBER (EWF) FILL SHALL COMPLY WITH CURRENT ADA, ASTM AND CPSC RULES AND REQUIREMENTS.
10. SAND IS NOT AN ADA COMPLIANT PLAYGROUND SURFACE AND SHALL NOT BE USED IN CONJUNCTION WITH PLAYGROUND EQUIPMENT.
11. FALL ZONE CLEARANCE MUST BE CONSIDERED IN PLAY AREA DESIGN. CLEARANCE SHALL AT A MINIMUM MEET THE PLAYGROUND EQUIPMENT MANUFACTURER’S CRITERIA WITH AN ADDITIONAL 1’ PREFERRED.
12. DRAINAGE SHALL BE DIRECTED AWAY FROM AND NOT INTO PLAY AREAS.
13. UNDERGROUND UTILITIES SHALL NOT BE INSTALLED BENEATH PLAY AREAS.
14. OVERHEAD UTILITIES SHOULD NOT BE LOCATED ABOVE PLAY AREAS. WHEN UNAVOIDABLE, CONSULT WITH APS PLAYGROUND EQUIPMENT OVERSIGHT.
15. PLAY AREA ACCESS OPENINGS SHALL BE 6 FEET MINIMUM WIDTH, EXCLUSIVE OF TRANSITIONS.
16. ACCESS OPENINGS SHALL HAVE 1:1 TRANSITIONS OUTSIDE OF THE 6 FEET MINIMUM WIDTH.



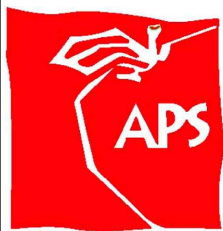
**ALBUQUERQUE  
PUBLIC SCHOOLS**  
*Expect great things!*

**PLAYGROUND GENERAL NOTES**

DRAWN BY: HMC  
REVIEWED BY: APS  
DATE ISSUED: 5/31/17  
SCALE: N/A

STD DWG:

**P-602**

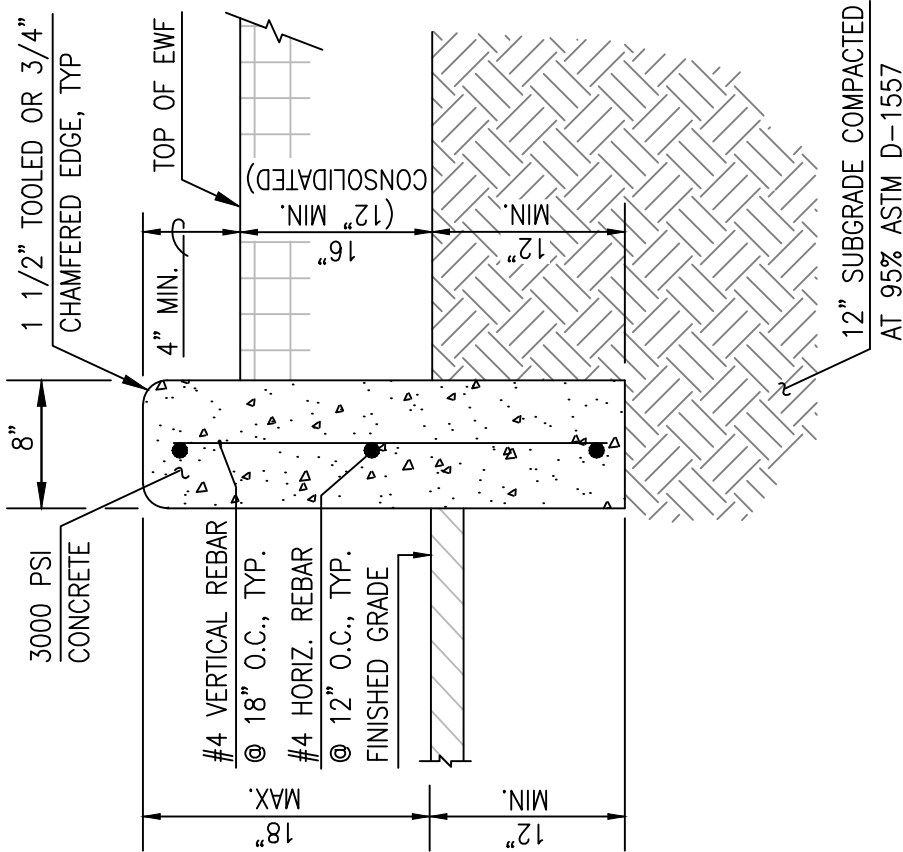


**ALBUQUERQUE  
PUBLIC SCHOOLS**  
*Expect great things!*

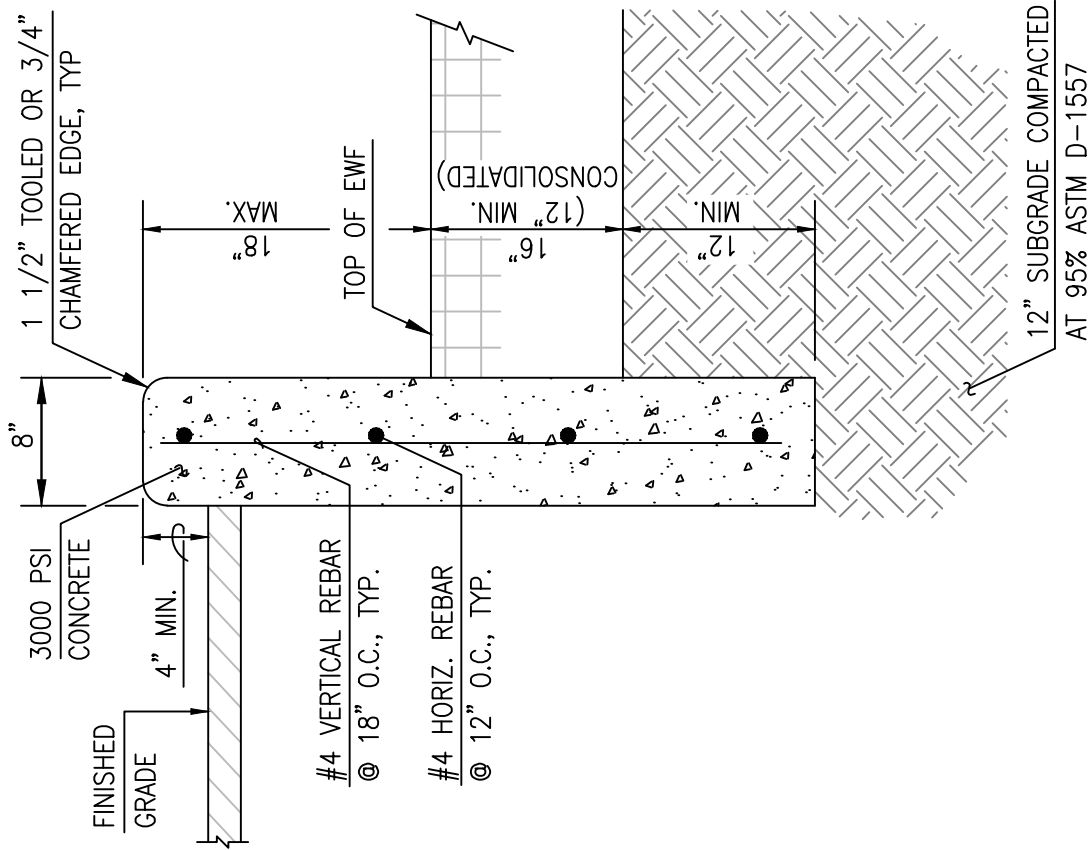
**TYPICAL PLAY AREA CONTAINMENT  
WALL SECTIONS**

DRAWN BY:	HMCG
REVIEWED BY:	APS
DATE ISSUED:	10/31/16
SCALE:	1" = 1'-0"

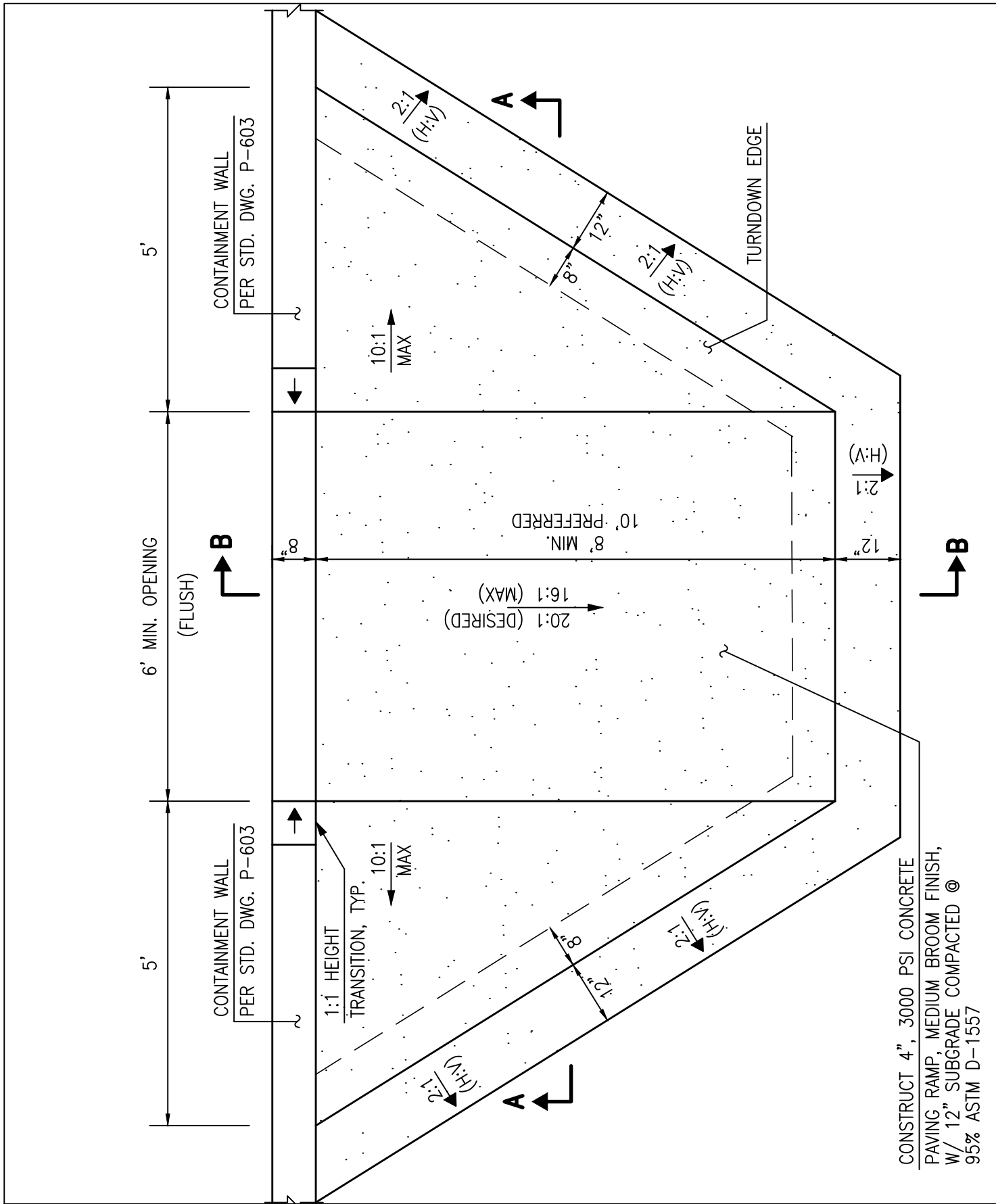
STD DWG:	<b>P-603</b>	



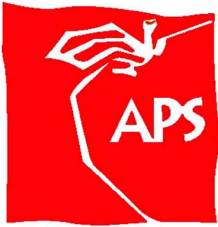
**1) FINISHED GRADE BELOW PLAY AREA**



**2) FINISHED GRADE ABOVE PLAY AREA**



CONSTRUCT 4", 3000 PSI CONCRETE  
 PAVING RAMP, MEDIUM BROOM FINISH,  
 W/ 12" SUBGRADE COMPACTED @  
 95% ASTM D-1557

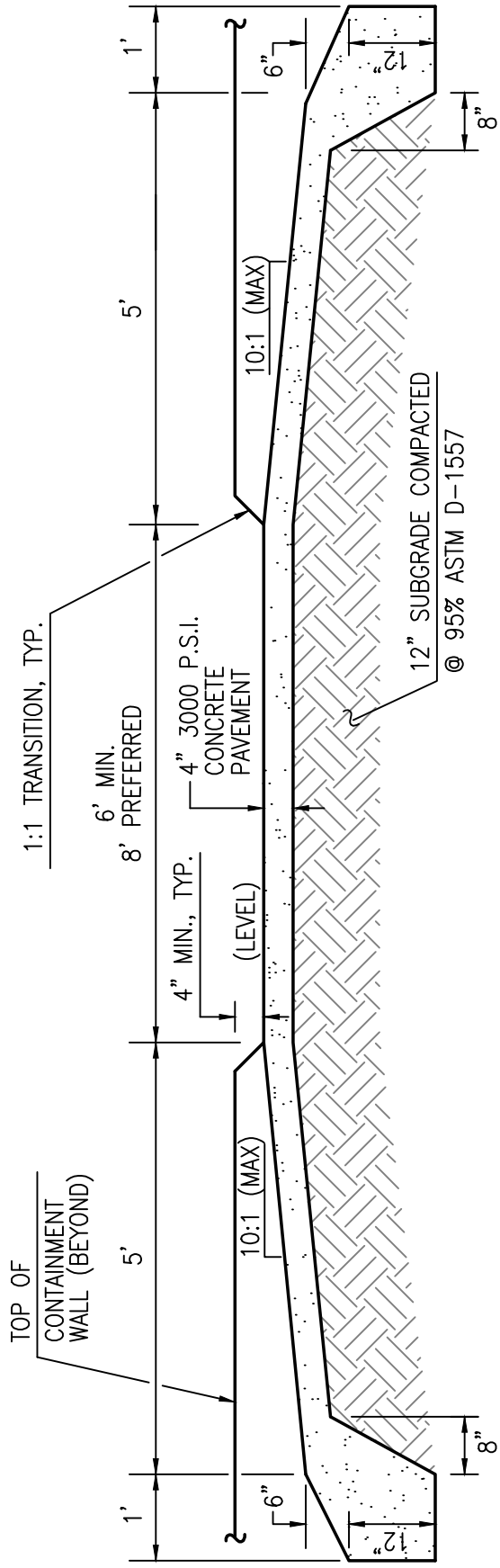


**ALBUQUERQUE  
 PUBLIC SCHOOLS**  
*Expect great things!*

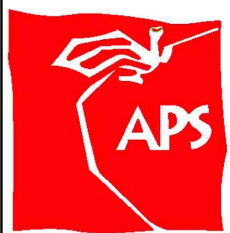
**TYPICAL PLAY AREA ACCESS  
 RAMP DETAIL**

DRAWN BY:	HMCG
REVIEWED BY:	APS
DATE ISSUED:	10/31/16
SCALE:	1" = 2'-0"

STD DWG:  
**P-604**



**SECTION A-A**

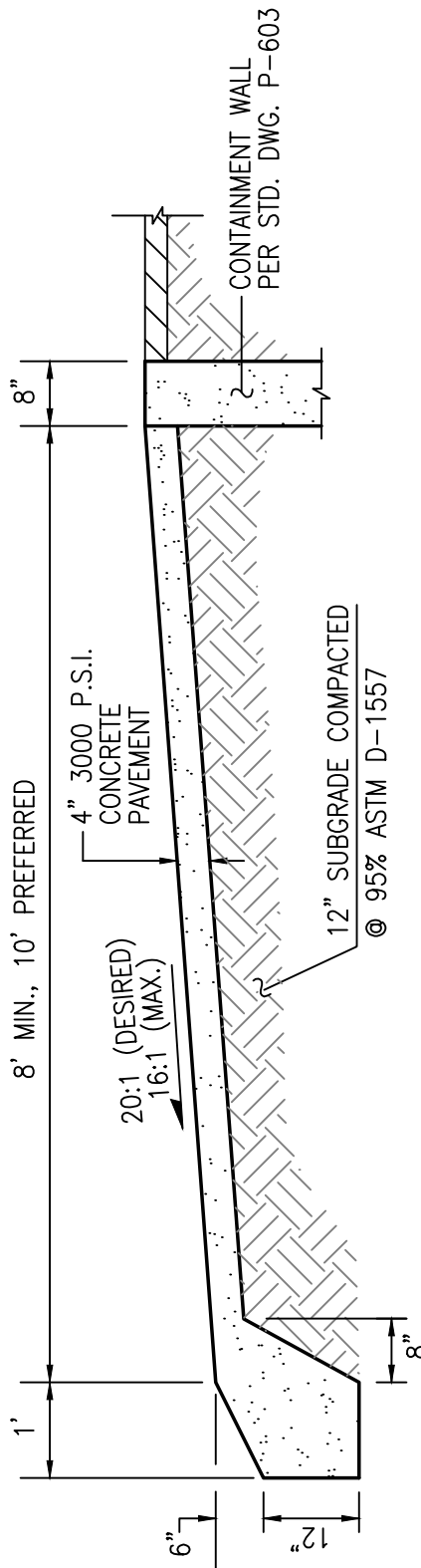


**ALBUQUERQUE  
PUBLIC SCHOOLS**  
*Expect great things!*

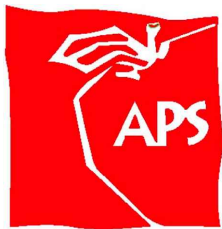
**TYPICAL PLAY AREA ACCESS  
RAMP SECTION A-A**

DRAWN BY:	HMCG
REVIEWED BY:	APS
DATE ISSUED:	10/31/16
SCALE:	1" = 2'-0"

STD DWG:  
**P-605**



**SECTION B-B**

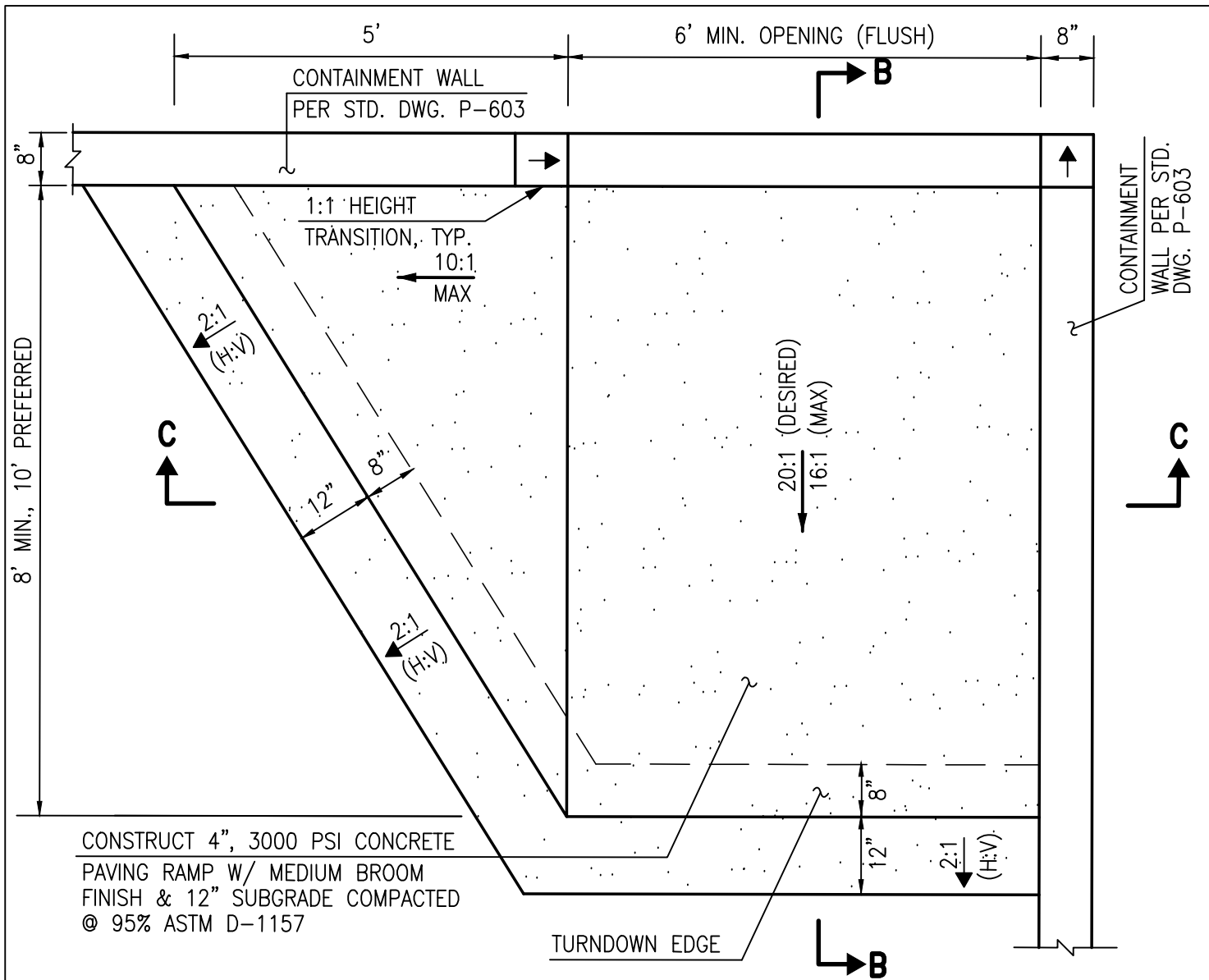


**ALBUQUERQUE  
PUBLIC SCHOOLS**  
*Expect great things!*

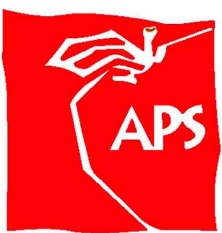
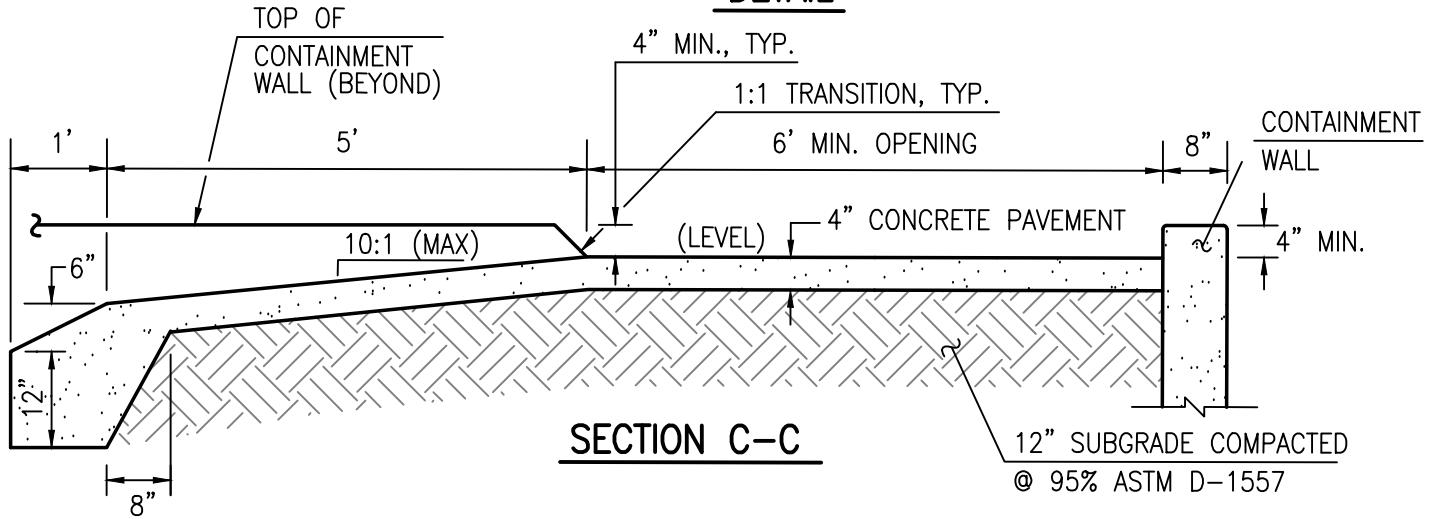
**TYPICAL PLAY AREA ACCESS  
RAMP SECTION B-B**

DRAWN BY:	HMCG
REVIEWED BY:	APS
DATE ISSUED:	10/31/16
SCALE:	1" = 2'-0"

STD DWG:	<b>P-606</b>
----------	--------------



**DETAIL**



**ALBUQUERQUE  
PUBLIC SCHOOLS**  
*Expect great things!*

**TYPICAL PLAY AREA ACCESS RAMP  
@ CORNER DETAIL**

DRAWN BY:	HMC
REVIEWED BY:	APS
DATE ISSUED:	10/31/16
SCALE:	1" = 2'-0"

STD DWG:  
**P-607**