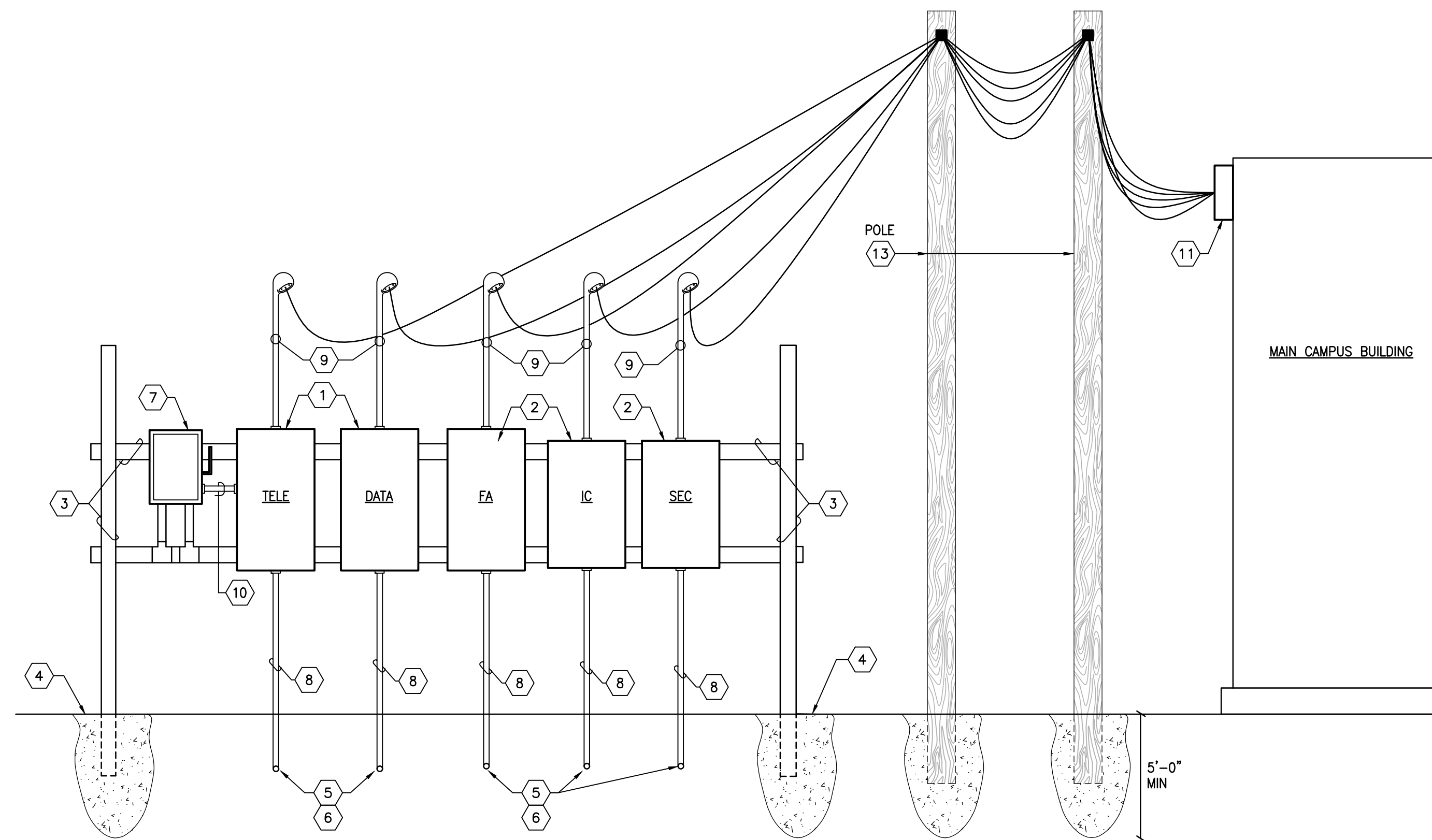


**GENERAL NOTES**

A. ALL SERVICE CONDUITS AND SERVICE ENTRANCES SHALL CONTAIN 90° LARGE SWEEPS AND SHALL BE WRAPPED OR DIPPED FOR CORROSION PROTECTION.

**KEYED NOTES**

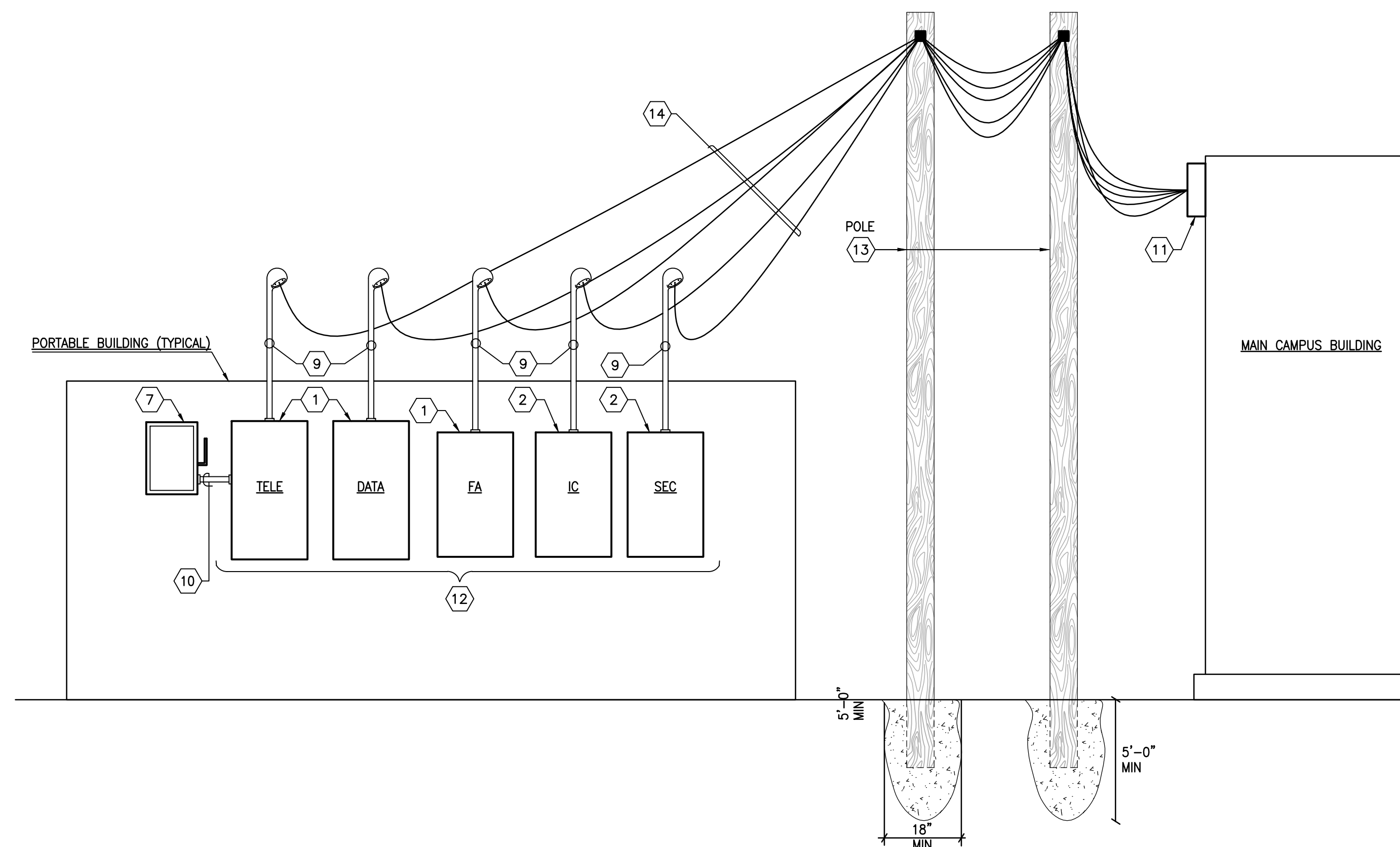
1. 24"x24"x6" NEMA 4R, HINGED COVER ENCLOSURE, MOUNTED ON UNISTRUT AS SHOWN.
2. 18"x18"x6" NEMA 4R, HINGED COVER ENCLOSURE, MOUNT ON UNISTRUT RACK.
3. GALVANIZED UNISTRUT RACK, 1 5/8" (DOUBLE).
4. 3" MINIMUM CONCRETE BASE.
5. 90° ELBOWS (IMC), ELBOW TO BE LARGE SWEEPS.
6. LOW-VOLTAGE WIRING SHALL BE GROUNDED IN ACCORDANCE WITH NEC 250 AND NEC 800.100.
7. 30 AMP, SINGLE PHASE DISCONNECT SWITCH FOR SPECIAL SYSTEMS CABINET, MAKE REQUIRED CONNECTIONS. COORDINATE WITH SOUND AND SIGNAL.
8. 2" PVC WITH RIGID RISERS AND ELBOWS TO PULLBOXES.
9. 2" CONDUIT WITH ASSOCIATED WEATHERHEAD, CONDUCTORS BY OTHERS.
10. 3 #12 IN A 1/2" CONDUIT.
11. BUILDING MOUNTED PULLBOXES (5) - (2) 24"x24"x6" AND (3) 18"x18"x6" NEMA 4R, WITH CONDUITS EXTENDED TO MAIN SPECIAL SYSTEMS CABINETS IN BUILDING.
12. HINGED COVER ENCLOSURES, WALL MOUNTED AT PORTABLE BUILDING.
13. POLES FOR SYSTEMS DISTRIBUTION TO PORTABLES SHALL BE 30 FEET LENGTH WITH 5 FEET DEPTH. (BROWN CREOSOTE).
14. OVERHEAD SERVICES ABOVE ROOF SHALL COMPLY WITH NEC 2011, 230.24(A) AND (B) AND NM ELECTRICAL CODE 14.10.4.11F(1).



**PORTABLE BUILDING SPECIAL SYSTEMS RISER DIAGRAM (OVERHEAD TO UNDERGROUND)**

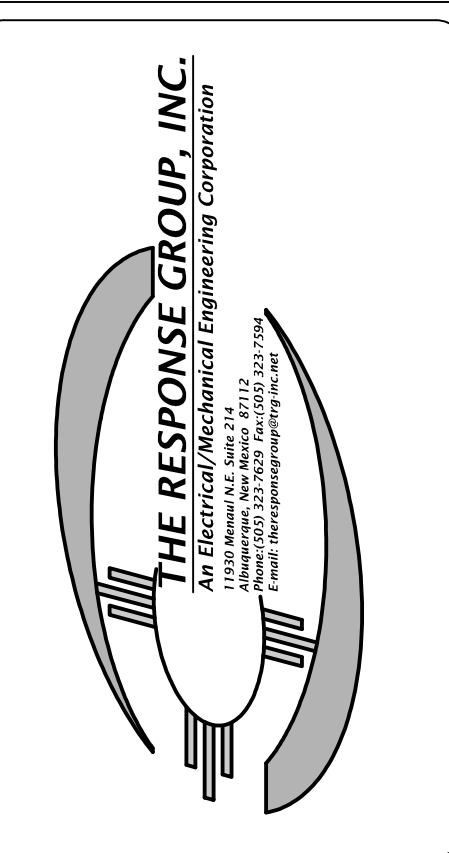
NO SCALE

CONDUIT SCHEDULE		
CONDUIT SIZE	CONDUCTOR SIZE	SYSTEM SERVED
2"	#22 AWG, 2 PAIR	INTERCOM
2"	#18 AWG, 1 PAIR	SECURITY
2"	#16 AWG, 1 PAIR	FIRE ALARM
2"	#14 AWG, 1 PAIR	FIRE ALARM

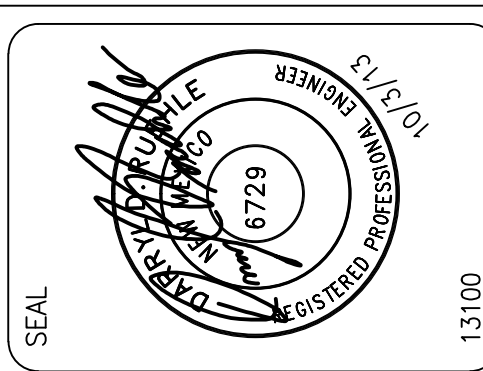


**PORTABLE BUILDING SPECIAL SYSTEMS RISER DIAGRAM (OVERHEAD)**

NO SCALE



CONSULTANTS



ALBUQUERQUE PUBLIC SCHOOLS PORTABLE BUILDING STANDARD DRAWING

DATE	DESCRIPTION	MARK

PROJECT NO:  
DESIGNED BY: RP  
DRAWN BY: JKD  
CHECKED BY: DDR  
DATE: MAY 30, 2013

SHEET TITLE  
SPECIAL SYSTEMS RISER DIAGRAMS

SHEET NO:  
**E-201**  
of .