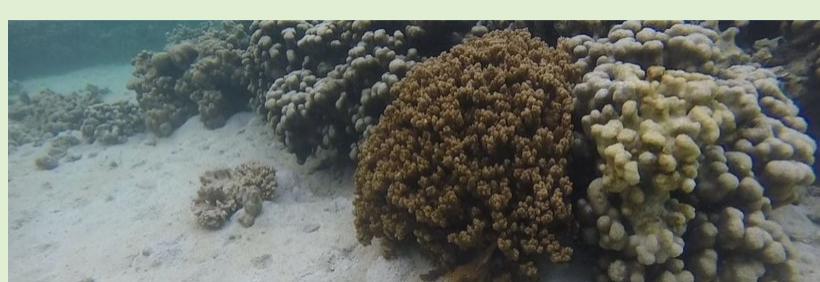


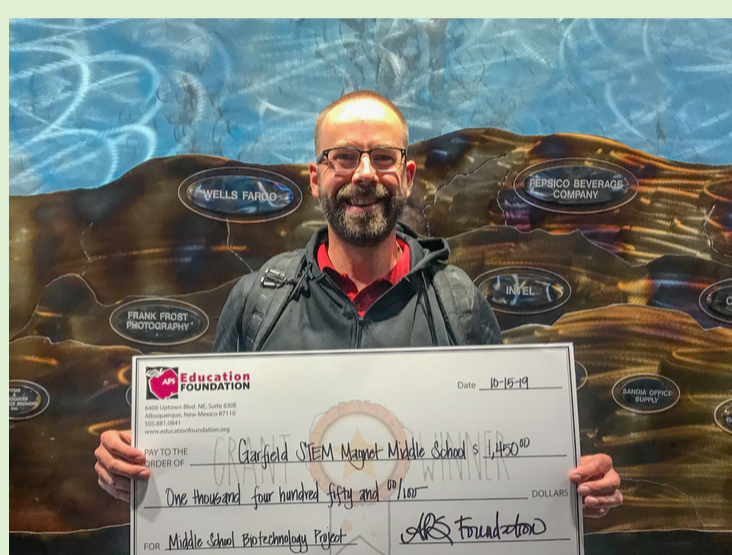

GOING THE
 social
DISTANCE



**Chris Speck,
Middle School Science Teacher
"An Innovative Approach"**

His story, of innovative approaches from growing coral reefs in the desert, intriguing middle school students, and bringing science to life...

Learn more about this passionate teacher...



Christopher Speck heard about the APS Education Foundation from a former principal and decided to apply for a grant in 2015 so his students could participate in high altitude ballooning. Since then, he has been awarded several Classroom & Grade Level Learning grants in STEM. Community grant readers who review these applications comment on his projects as being unbelievable for a middle school science classroom.

When asked about his favorite project-based learning (PBL) initiative, he responded, "My favorite project so far has been the funding of Vernier gas sensors. These measure the amounts of carbon dioxide and oxygen down to the parts per million (ppm). The best science projects are the ones where every student can be involved, and the aforementioned sensors have done this better than anything else. With them, students have been able to pose questions, research variables, and draw conclusions about invisible processes. They make the opaque visible. They see themselves as scientists."

He continued, "Science teachers understand that no textbook or curriculum package can keep pace with ongoing research. Crafting innovative experiences that bring the field to the classroom can be daunting, but students thrive when it happens. I remember showing my class a clip about coral reefs and a student exclaimed loudly in the middle of the video "We should do that!". "What?" I said. "Stuff with corals!", she replied. "OK", I responded. This conversation led to writing a grant that funded a reef tank and multiple species of corals. Years later my students still learn about corals. The ideas that the funding enabled, like the corals themselves, are immortal. Our ideas do not exist without form."

What's next for Mr. Speck and his students?

How do we fit in? Read more in tomorrow's email!

SUPPORT Teachers TODAY



GOING THE _social_ DISTANCE



April 16-30

[WHO ARE WE](#)

[OUR IMPACT](#)

[OUR GRANTS](#)

[HOW TO GIVE](#)

Share this email:



[Manage](#) your preferences | [Opt out](#) using TrueRemove™
 Got this as a forward? [Sign up](#) to receive our future emails.
 View this email [online](#).

P.O. Box 25704
 Albuquerque, NM | 87125 US

This email was sent to .
 To continue receiving our emails, add us to your address book.

emma