

RayLee Homes

A NEW GENERATION

By TJT Group, Ltd

Apple House 2 - Benefiting APS!

This RayLee Home is located in the beautiful community of Stormcloud located just north of I-40 and Unser... walking distance from the new APS Sports Complex! Proceeds from the sales of this home go directly to benefiting teachers and students through the Horizon Campaign and the APS Foundation. The RayLee Home team and participating partners are once again proud to support Albuquerque Public Schools through the Apple House Project.

Amenities in this home include:

- *Granite Kitchen Counters
- *Maple Cabinets
- *Decorative tile backsplash
- *Custom Interior Paint
- *Raised panel doors and trim
- *Wood Blinds throughout
- *Tile in all wet areas and entry
- *Fireplace in Living Room
- *Advanced Security System
- *Covered Back Patio
- *NMGB Certified Silver

For more information:

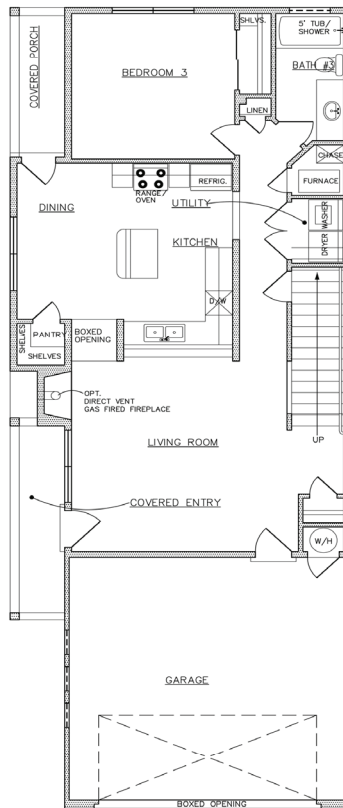
Tammy Grady Thornton
 tgradythornton@rayleehomes.com
 505-917-1677

or

www.rayleehomes.com

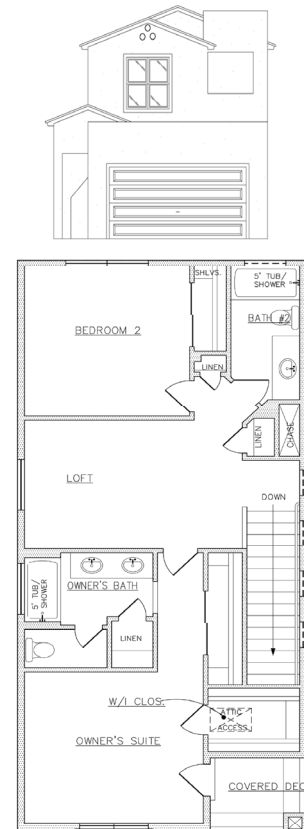
\$200,878

8924 Arkansas
 3 bed, 3 bath



Shea

1882 sq. ft. - PRELIMINARY



Elevation Renderings are an artistic interpretation and may not be an exact representation of what will be built.
 2/20/13



ALBUQUERQUE PUBLIC SCHOOLS
 EDUCATION FOUNDATION