

APS BOE District 2 Written Description

July 2012

Beginning at a point where the North Bernalillo County line intersects with a north/south PNM transmission line easement, approximately 4 miles west of Universe Blvd;

Along	Direction	To
Bernalillo County Line	East	Hwy 528
Hwy 528	South and East	.075 miles to the intersection of 528 and the Rio Rancho City Limits.
Rio Ranch City limits	North	Bernalillo County Line and South Boundary of Intel Corp.
South Boundary of Intel Corp	West	Hwy 528 SE
Hwy 528 SE	North	Sara Rd SE
Sara Rd SE	East	East Boundary of Intel Corp.
East Boundary of Intel Corp	South	A point .396 miles north of Bernalillo County on the western limits of the Village of Corrales
Western limits of the Village of Corrales	North and East	Rio Grande
Rio Grande	South	Montano Rd NW
Montano Rd NW	West	Coors Blvd NW
Coors Blvd NW	South	Western Trl NW
Western Trl NW	West	Atrisco Rd NW
Atrisco Rd NW and its extension	North	Unser Blvd NW
Unser Blvd NW	Southwest	1 mile to the PNM transmission lines running northwest/southeast.
The PNM transmission Lines	Northwest	5 miles to a point on the Albuquerque City limits.
The PNM transmission Lines	North	Bernalillo County line and the point of beginning.



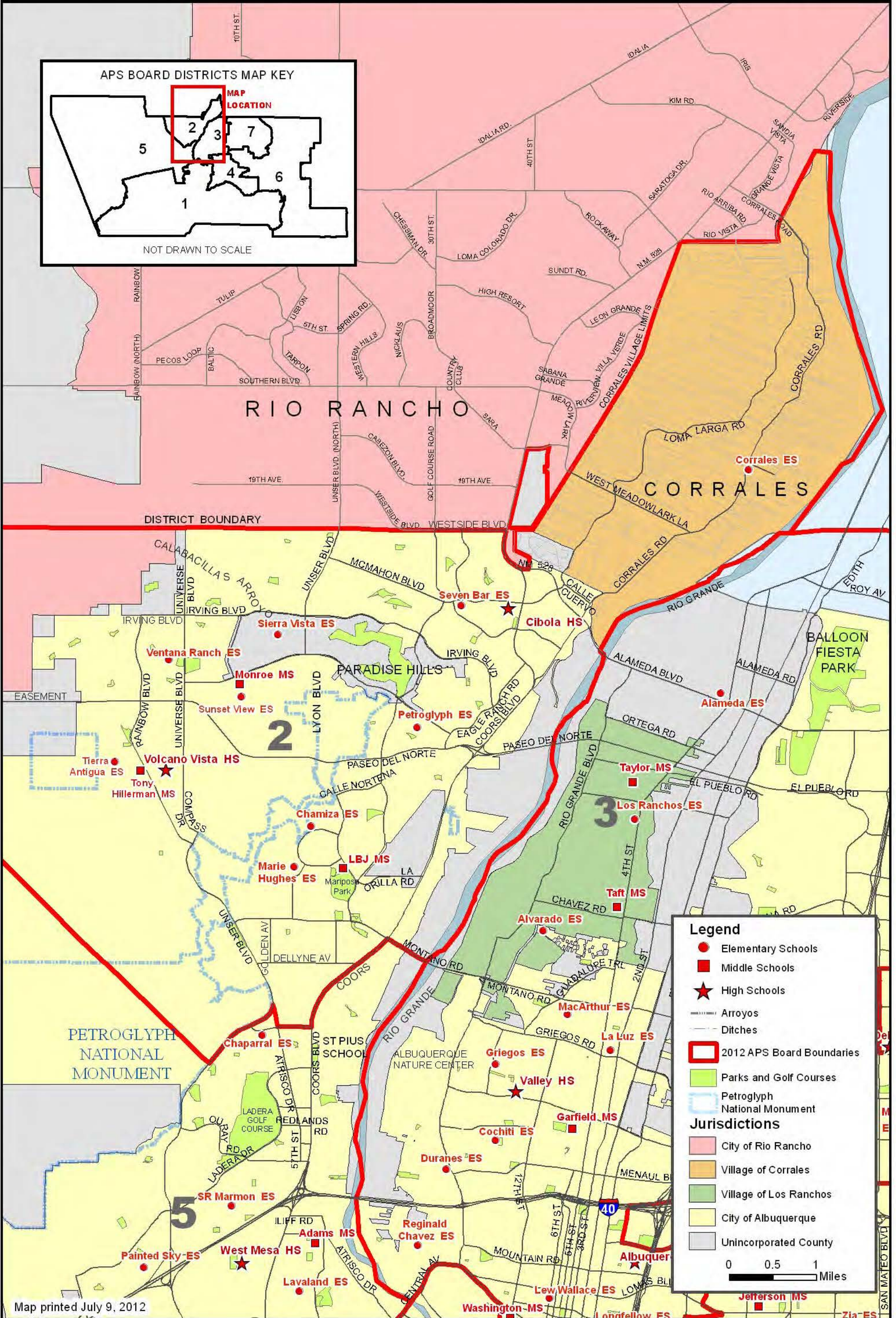
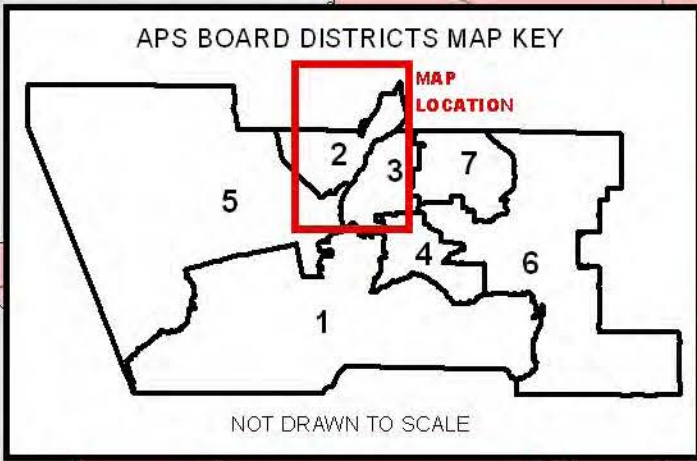
Albuquerque Public Schools

Board of Education

Board District 2 Boundary

July 2012

2012 APS BOARD DISTRICT 2



Legend

- Elementary Schools
- Middle Schools
- ★ High Schools
- Arroyos
- Ditches
- ▭ 2012 APS Board Boundaries
- Parks and Golf Courses
- Petroglyph National Monument

Jurisdictions

- City of Rio Rancho
- Village of Corrales
- Village of Los Ranchos
- City of Albuquerque
- Unincorporated County

0 0.5 1 Miles