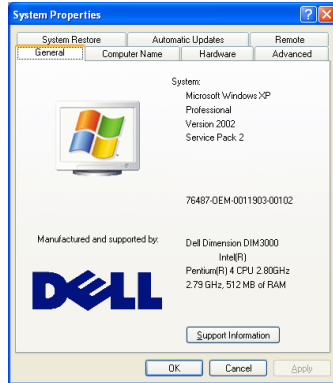




Recommended Computer Requirement:

1. Intel® Pentium® D Processor with Dual Core or Pentium® 4 Processor 2.8GHz+
2. 1 GB system memory (RAM)
3. 500 MB free disk space
4. Microsoft® Windows XP with Service Pack 2
5. TWAIN compliant scanner connected via **USB**.



Your computer **MUST** be running either Windows 2000 with Service Pack 4 or Windows XP with Service Pack 2.

If you are not sure which service pack or version of your operating system you are running on your computer, simply right click on the My Computer icon and select Properties. If you need to download:

Service Pack 2 for XP:

- <http://www.microsoft.com/windowsxp/sp2/default.mspx>

Service Pack 4 for 2000:

- <http://www.microsoft.com/windows2000/downloads/servicepacks/sp4/default.mspx> (as all one line).

OTHER REQUIREMENTS

In addition to the correct Windows operating system, you also need Adobe Acrobat Reader 7.0 and Microsoft's .Net Framework 1.1. You can download:

Adobe Reader 7.0:

- <http://www.adobe.com/products/acrobat/readstep2.html>

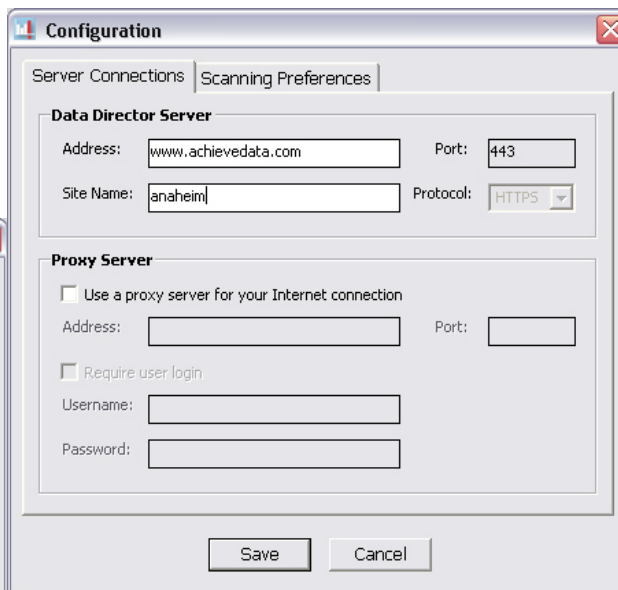
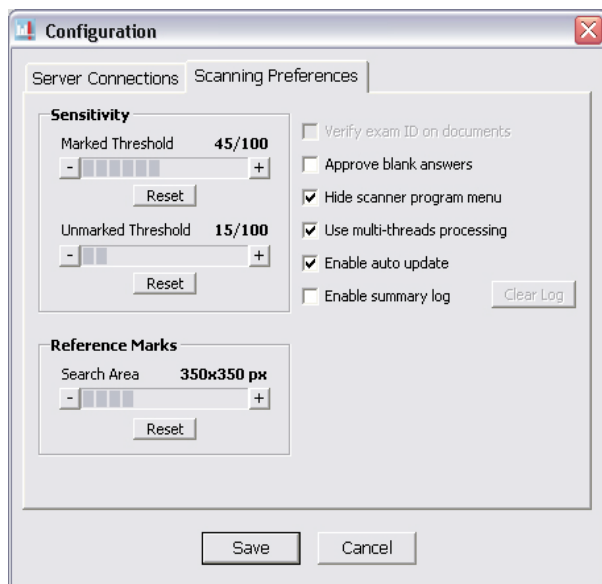
Microsoft .Net Framework 1.1:

- <http://www.microsoft.com/downloads/details.aspx?FamilyID=262d25e3-f589-4842-8157-034d1e7cf3a3&displaylang=en> (as all one line) – *Windows Update required after install*

DataScanner Configuration

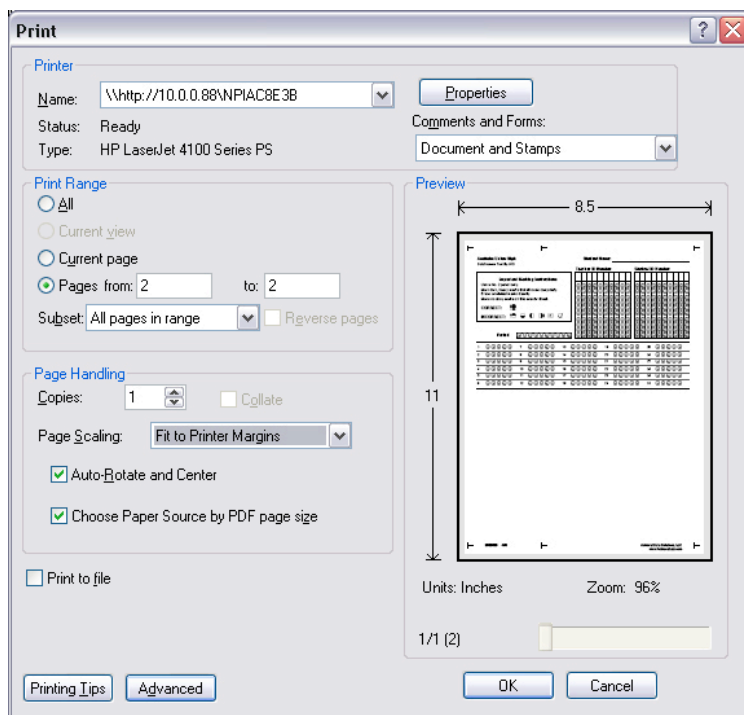
When setting up your scanner you have two tabs to work with. In the Server Configuration tab (right) enter the following:

- Address: www.achievedata.com
- Site name: aps



The Scanning Preferences tab (left) will adjust the sensitivity of your scanner. If your scanner is picking up too many marks, slightly lower the Marked Threshold and slightly raise the Unmarked Threshold. These settings may not need adjusting.

Printing



For best scanning results, it is recommended that you use very bright white paper. 92 bright and up is recommended.

If using Adobe Acrobat Reader (recommended), in printing preferences, ensure that in the **Page Scaling** option **Fit To Printer Margins** is selected. (see picture)

If using a Mac and the Preview application, adjust the page scaling to 94% in page set-up prior to printing.

Note the three sideways “T” along the top and bottom of the sheets. Be sure that those show in any print previews and verify that they are printed on your actual sheets before administering any exams. It is always a good idea to do small test print and scan prior to your initial exam administration using DataScanner.