

NATIONAL BULLYING PREVENTION AWARENESS



Double Eagle and North Star Recognize National Bullying Prevention Awareness Week October 22-28, 2006

National Bullying Prevention Awareness Week is October 22-28, 2006.

It is sponsored by PACER (Parent Advocacy Coalition for Education Rights) Center and co-sponsored by National Education Association and National PTA.

Teachers, parents, and children nationwide are encouraged to use bullying prevention

activities and materials at WWW.PacerKidsAgainstBullying.org to help end bullying.

Information on cyber bullying is available on this site.

Activities for DE/NS students are being planned by their respective counselors, Beverly Calloway and Alicia Snyder. Counselor in-class presentations will answer the questions:

(Continued on page 8)

NEW ATTENDANCE PROGRAM

The La Cueva Cluster started using a new attendance software last week. This software is web based and allows teachers to take attendance on the computer in their classroom. Procedures for parents will remain the same. (Please refer to your parent handbook)

Each day your

child is absent or going to be late, please call the absentee number before 9:30 a.m. A volunteer parent committee will check attendance report every morning, beginning at 9:30a.m.

If your child has not been reported absent and is not in school, the volunteer committee will immediately notify you

at home or at work. The attendance number is **857-0187 ext 1**. This number is to report absences **ONLY**.

The **change** with the new software is that if you do not call in or can be notified as to why your child is absent your child will be marked with an unexcused absence.

COMMUNITY CALENDAR

OCTOBER

22-28 National Bullying Prevention Awareness Week

NOVEMBER

1 Double Eagle PTA Exec. Mtg 9:15 AM

2 Reflections Entries DUE TODAY

3 End of 1st Trimester

6 - 10 Reflections Cultural Arts Show

13 Reflections Contestant Reception 6:30 PM

15 Double Eagle PTA General Mtg 7 PM Library

16, 17 No School Parent Teacher Conferences

23, 24 No School Thanksgiving

Clip & Save Important Dates



Troy Hughes
Double Eagle Principal

**Visit Your
school's
website for
up-to-date
information**

Double Eagle:
<http://www.aps.edu/aps/DoubleEagle/index.htm>

North Star:
<http://www.northstarwolves.com/>



Diane Kerschen
North Star Principal

CLASSROOM OBSERVATION PROCEDURES

Classroom parents must request an observation twenty-four (24) hours prior to the observation. The request needs to be made to the teacher. Teachers may waive the twenty-four (24) hour requirement. Please remember that your role is to be only observational. If you have a certain area in which you want to

observe, please inform the teacher when setting up the observation. Our classrooms are learning environments and students' needs take precedence. If you wish to discuss your observation with the teacher, this can be arranged for a later time. Our teachers will be happy to discuss and answer questions from the observation at that

time. We expect all observers to respect the confidentiality that we guarantee our students and we appreciate your cooperation.

(Addendum to Double Eagle Elementary Parent Handbook for 2006 – 2007 General Information and School Policies)

Troy Hughes, DEES Principal

STANDARDS BASED PROGRESS REPORTS, PART II

As promised in the last article, I wanted to write about how we assess our students here at North Star and Double Eagle. Our progress reports are Standards-Based. We assess children by their skills and knowledge that they are expected to learn at their particular grade level. Scoring guides, called rubrics are used to spell out what students need to do to demonstrate their understanding of each topic.

Grading in a standards-based system looks a little different, but gives parents a much clearer picture of their child's **actual** progress. Standards-based performance marks are 4, 3, 2, 1, M. Traditional letter grades are A, B, C, D, F. Standards-based

performance marks compare students to grade level standards while traditional letter grades compares students to each other and fixed percentages.

When using standards-based assessments it is clear when the students actually **learn** key concepts. It is easy for students to miss key concepts necessary to build on when using letter grades. Standards-based assessing also clearly separates **effort** from **academic achievement**, while in letter grading effort and achievement are blended, so it is difficult to see if a student truly understands the content.

We hope that our Standards-Based Progress Reports have improved over the last few years and

are hopefully easier to understand. It is shorter! It is down to one page and half the number of boxes. The language is simpler and the 4,3,2,1, replaces the "Proficiency" language. The performance marks report on material covered to date. Students are not judged on material they haven't covered yet to master the content standards. **Mastery is held separate.** The goal is that every student masters each content standard, but is not mixed in with performance on material covered to date.

I hope this helps in the understanding of our Standards-Based Progress Reports. Thank you for sharing your wonderful children with us!!!

Diane Kerschen, North Star Principal



READER ROSTER

Junie B Jones

Madeline Kraus
Brooke Prichard

Arthur

Ryan Allin
Katie Meyer

Magic Treehouse

Daniel Ashpes
Brooklyn Berry
Kobie Boslough
Hannah Knudsen
William McCormick
Matthew Read
Allison Willner

Newberry

Darius Fatemi
Thomas Heitt
Jonathan Kane
Stephanie Lloyd
Andrea Lin
Julia Lu

Caldecott

Evan Ausman
Arienne Carey
Zachary Fitch
Morgan Fortin
Ryan Fotieo
Jeremy Gianoulakis
Thomas Judkins
Jared Kane
Alex Keaveney
Annabelle Kubinski
Kallista Kunzler
Tara Morton
Ethan Pearson
Noah Rodney
Ben Rozenblum
Aashi Sanchorawala
Sarah Weber
Shane Zottnick

Franklin

None this time!

Mystery

Rachel Fang
Jessica McAlister
John Michael
Rebecca Restrepo

LIBRARIANS' NOTE

From Mrs. Stepetic & Mrs. Wray

When you think of spiders...

While spiders are so often associated with Halloween and the scariness of creepy things that lurk in the darkness or haunted places they are also an interesting part of a wide range of cultural lore and mythology. In Africa, there are amusing tales of Anansi, the trickster spider; in

Greece there is a tale of Arachne, who boasts that she can weave better than anyone & is turned into a spider by Athena; in our own southwestern Native American lore there is the story of the creator, Spider Woman. Some great spider stories to tell along with **or instead of** Halloween are:

Ananse's Feast: An Ashanti Tale by Tolowa W. Mollo

D'Aulaire's book of Greek Myths by Ingri and Parin D'Aulaire

Spider Spins a Story: Fourteen Legends from Native America edited by Jill Max

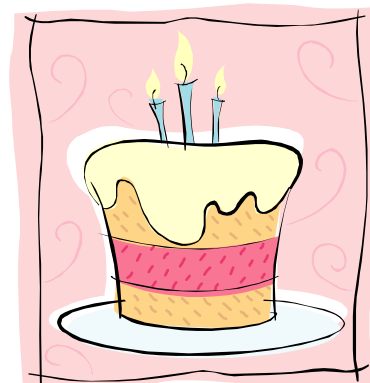
The Spider & the Fly by Mary Howitt This poem has been illustrated by Tony DiTerlizzi & is a recent Caldecott honor book!

"If you wish to live and thrive, let a spider run alive." - Old English Proverb

HAPPY BIRTHDAYS!

Happy Birthday to all of our students that celebrated a birthday in September!

Friends of the Library for both Double Eagle & North Star would like to say an extra special "Congratulations!" to the monthly birthday winners for each school. They are:



Double Eagle

North Star

K- 2 Sarah Allen

Ana Nelson

3- 5 Gerald Kehoe

Elizabeth Ochoa

SWEET TREATS

October 24: Halloween
Treats

November 20: Pies

December 11: Holiday
Cookies

Dana Fotieo (DEPTA)
822-9632

Jessica Sweet (NSPTA)
856-2059

REFLECTIONS



**ENTRIES DUE
NOVEMBER 2!**

THEME: My Favorite
Place

CATEGORIES:

Visual Arts

Literature

Film/Video Production

Dance Choreography

Musical Composition

Photography

DEES Contact:

Penny Tennant
797-2448

NSES Contact:

Etta Sisnero
858-3431

ENCHANTMENT FUNDRAISER UPDATE

PRIZES!**Attention Students
& Parents:**

Did you know that if you sell at least one Enchantment Fundraiser item you will win a prize? Sell 135 items or more and you will win up to ten prizes! So hit up your friends, family and neighbors for those orders. **Do not collect sales tax!**

Orders and money

are due back at school by Friday, October 20th. Orders will be distributed on November 16th.

Because of the perishable nature of most of the products, items will be distributed between **9-11 am and 3-5 pm in the North Parking Lot.** Please indicate on the order form if you will be picking up the order in the morning or afternoon.

PARENTS:

Volunteers are needed to gather orders & distribute product. If you are available to help on October 20th or November 16th,

Please contact**DOUBLE EAGLE:**

Sue Boren

858-2429

greenchilist@hotmail.com

NORTH STAR:

Celina Dowling

821-8026

cakanina@comcast.net

DONATE GENTLY USED & NEW CLOTHING

Double Eagle and North Star Elementary Schools will be collecting items for the APS Clothing Bank. The Clothing Bank **DESPERATELY NEEDS CLOTHING!** Collection dates are as follows:

OCT 16 - 20: **gently used clothing**

OCT 23 - 27: **new underwear and socks.**

There will be a **CONTEST** by grade levels. **WILL YOUR CLASSROOM**

COLLECT THE MOST?

Thank you in advance for your donation. Bring your **used** items to the boxes located in the **lobby**, and your **new** items to the **classroom**.

**SOUP'S ON!**

Monday, November 6, 2006...

"Soup's On"

We will be serving a variety of soups, chili, salad, breads, and dessert.

Upcoming luncheon

Want to help? Contact:

Dana Fotieo (Double Eagle) 822-9632

Jessica Sweet (North Star) 856-2059

DON'T FORGET CHOIR HAS STARTED!

We meet from 8:00 - 8:50 AM **Tuesdays** in the Cafeteria. Come and bring your singing voices! Contacts: **Julie Kerbleski** (856-5339) or **Suzie Dekleva** (856-6435)



The **Community Service Club** (for Double Eagle) still has some openings. We meet Tues. 3:45 to 4:45 in room 6. The cost is \$10 for supplies etc. You must have a form from the office and bring it to the meeting.



Don't forget to visit the Double Eagle PTA web page!
<http://www.aps.edu/aps/DoubleEagle/PTA/index.htm>

Find out what is happening in your school and how you can get involved.

Donate to Double Eagle PTA

During the school year, the Double Eagle PTA will hold various fundraisers to support and enhance education for our children.

If you own a business and would like to donate a service or items to be used in a future PTA-sponsored auction or as a treat for the children, please contact Sue Boren (858-2429) or email her at greenchilist@hotmail.com. Your contribution will be acknowledged in a future newsletter.

YEARBOOK: CALL FOR PHOTOS

ATTENTION ALL PARENTS AND STUDENTS!

Have you taken photographs of school events that you would like to see in our Double Eagle Yearbook? Between now and February you have a chance to submit your photos to the yearbook committee for

consideration. We will be happy to use pictures that show our great kids in action! It's easy to send them if you have digital files. Simply go to the PTA website <http://www.aps.edu/aps/DoubleEagle/PTA/index.htm> and click on the Email Your Photos link. It will send the pictures directly to us. If you have a regular

camera and would still like to contribute, we can scan and return them to you. You can email us using the same link on the PTA page.

If you are interested in helping with this treasured memento of your child's school year, please contact the yearbook

It's not too late to join Double Eagle PTA!

Let your voice be heard!

Cut out the membership form on page 7 and turn into your classroom teacher.

SWEET TREAT DATES FOR NEXT YEAR

Are you already signed up to help out with Sweet Treats at Double Eagle?

Then mark your calendars for 2007 events:

January 8
February 5
March 8,
April 5
May 3

If you're not part of this committee yet and would like to help out, contact:

Dana Fotieo (Double Eagle) 822-9632



**Signed
up and
haven't
been
called?**

**Don't worry -
we'll call!**

Fundraisers and activities are ongoing throughout the year, so you will be called closer to your event..

If you want to help out right now, we'll gladly take you up on your offer! Contact:

**Michelle
Bloom,**
821-1587,
michellebloom8
315@hotmail.
com

**DON'T
FORGET OUR
CLOTHING
DRIVE!**



MISSOULA CHILDREN'S THEATER

Missoula Children's Theatre has been scheduled to come to North Star the week of February 26 through March 3, 2007!!!

The show the children will be performing is *Snow White and the Seven Dwarfs*. Because of funding restrictions, we want to make sure that the North Star students want to continue to have Missoula Children's Theatre come to our school.

A survey was recently sent home in each child's backpack so that we can properly assess the level of interest. Please complete the survey if you are interested in participating in Missoula Children's Theatre and return it to your child's teacher. **THIS SURVEY DOES NOT REGISTER YOUR CHILD TO PARTICIPATE IN MISSOULA.** The registration process will take place in February 2007. Also on the survey will be information regarding the need for a volunteer pianist to perform the music for the show. If you have any questions or comments please call

David Krauss - 828-1368

or

Laurie McAlister- 880-0724

GO ONLINE : NEWSLETTER, T-SHIRTS, MORE!



Be sure to visit the North Star PTA Webpage.

The latest (and archived) newsletters are available in PDF format along with up-

to-date news on school events.

The order form for the Community T-Shirts and other memorabilia can also be printed out from the PTA webpage.

Meet your

North Star PTA Board, email PTA Chairpersons and find out what PTA-Sponsored events are yet to come.

[http://
www.northstarwolves.com](http://www.northstarwolves.com)

Join Your PTA: Your Involvement Makes a Difference!

Please circle one: **DOUBLE EAGLE PTA** **NORTH STAR PTA**

We need your support! Be part of a team striving to make our blended community a great place to grow and learn. It not only takes a top notch staff (which we have - hands down!), but it also takes parent commitment to continue to keep our schools successful. Dues are only \$5 per family per year, although you may donate more if you are able. Please make checks payable to the PTA in which your child is enrolled: *Double Eagle PTA* or *North Star PTA*. Please return the form below to your child's teacher along with payment in an envelope marked PTA MEMBERSHIP.

Name: _____ Phone # _____

Email: _____

Address: _____

Children's Names, Teachers & Grades: _____

We like to make sure all PTA Members receive minutes from our meetings. Would you like to receive minutes via email? Yes No

NM PARENT REPORT USING ASSESSMENTS TO HELP STUDENTS GROW

Notice for the parents of 4th and 5th grade students.



You have received a copy of your child's test results from the New Mexico Standard Based Assessment that was administered in March of 2006.

Please take the time to look over the results in reading, math and science.

The report goes into detail of the target range and your child's score.

You can also go to the New Mexico Public Education website to view even more information. The website is: www.ped.state.nm.us. Once you are there, click on "New Mexico Standards." This will allow you to see what the standards are and what they mean.

Please share the results with your child and discuss your child's strength and needs with their teacher.

This assessment is one of many that we use to help improve our instruction for your child.

Troy Hughes, DEES Principal



PREVENT BULLYING: OCTOBER 22 -28

(Continued from page 1)

What is bullying? What do you do about bullying? and Who can help when a bully is bothering you or someone else?

Students will make anti-bullying posters and will deliver anti-bullying morning announcements. Counselors will follow up with teachers and students if bullying is suspected.

Teachers and parents can play a critical role in creating a climate where bullying is not tolerated. When adults and children stand together, bullying ends," says Paula F. Goldberg, executive director of PACER.



Next Deadline: 10/27/06

NEWSLETTER Photos & Articles To submit an article or help sponsor our newsletter, please call Lisa at 897-8332 or email abqwriter@msn.com. If you have a photo of a school function, we might print it. Please do not email attachments without calling.

Please note: Newsletters are provided at no cost to the school or PTA thanks to the community sponsors below

The UPS Store

Same Counter Rates as UPS

We are proud to support our local schools. Please stop by either location and let us know that you would like us to keep sponsoring your school newsletter. We will sponsor any school newsletter located in the La Cueva, Del Norte and Sandia school districts.

The UPS Store
8100 Wyoming Blvd
Albuquerque NM 87113
Phone 858-1600 Fax 858-1601

Or

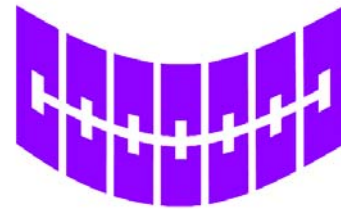
The UPS Store
7200 Montgomery Blvd
Albuquerque, NM 87109
Phone 888-9577 Fax 888-8997

\$2 Off On Air
Shipping
or \$1 Off Ground

4¢ B/W Copies
8.5x11 paper Or
39¢ Color Copies
8.5x11 paper

LISA KING, DDS, MS

ORTHODONTICS FOR CHILDREN AND ADULTS



8300 Carmel Ave. N.E., Suit
403

Albq., N.M. 87122

505-299-7678