

Building Successful Community Engagement Strategies with the Latino Community



Introduction... We have an opportunity to



- build upon core American values using
 - ❖ collaborative community activism, and
 - ❖ leadership with our schools
- foster the best creativity of our youth
- create learning environments where teachers and all staff are inspired every day
- address long-standing challenges

Breaking Down Barriers


- Value parents, students and families.
- Clearly communicate the goals of the district and expectations for meeting those goals.
- Build and strengthen partnerships between home and school.
- Increase accountability for educators, administrators and the community.
- Create legislation that is explicit in supporting education.



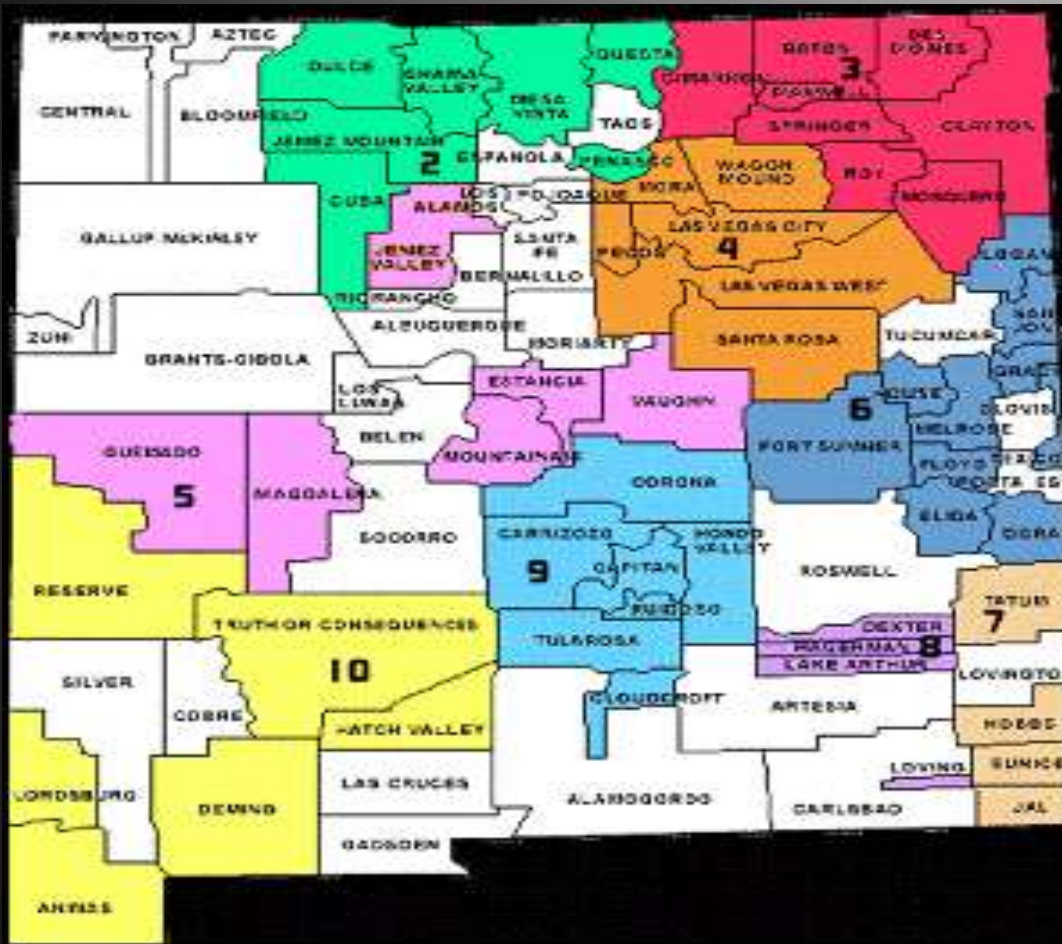
APS is leading with the ...

- Hispanic Education Act (featured)
- Gates Foundation Award – APS is one of four districts in the nation will be analyzing data for
 - 1). Effective instructional strategies for Hispanic Students
 - 2). Teacher effectiveness
 - 3). Impact of the state's three-tired licensure system on student performance
- Extended Day Program
- Professional Learning Communities for teachers

APS has...

- Narrowed the achievement gap in math and reading scores between fourth-grade Hispanic and White students and math and reading scores between eighth-grade Hispanic and White students
 - Improved the number of Hispanic students passing Advanced Placement exams
 - Created a set of 8 goals used to guide all activity by the district and schools.
- 

About New Mexico school districts



- 89 school districts
- More than 325,000 students total
- Smallest district – Mosquero with 43 students
- Largest district – APS with 90,000 students
- 56.7 percent Hispanic students
- 28.5 percent White students
- 10.7 percent Native American students
- 2.7 percent African American students
- 1.4 percent Asian students

About Albuquerque Public Schools




- Serves more than one-third of the state's students
- Largest school district in New Mexico
- District covers 1,230 square miles
- APS is the 32nd largest school district in the United States

About APS Teachers

- 6,500 fulltime teachers
- Average annual teacher salary is \$45,000
- 43 percent of all teachers have a master of arts degree or higher
- Teachers have an average of 11 years of experience
- 1,030 substitute teachers
- 2,081 educational assistants
- Average age of a teacher is 46 years

Community engagement will...

- Bring community ownership of education back
 - Re-establish confidence and create opportunities for alliances
 - Mess up education as we know it...
 - Open up a can of worms...
 - Need to be managed ...
 - Force us to look at ourselves from a different set of assumptions...
- 



FRAN

© Original Artist
Reproduction rights obtainable from
www.CartoonStock.com

Search ID: form1339




Building a cultural proficiency approach requires we recognize ...

Strengths	Limitations
History	Institutional limitations ; multi-generational trauma
Organizational capacity	Ability to manage and lead
Data won't allow us to pretend..	Addressing inequities in a hostile environment
Determination at all level	Building organizational culture

- Opportunities...
- To re-review history as an institution, school, and leader in the community
- Recession is requiring new collaboration initiatives
- Learning to have the hard conversations

Building coalitions

Present context includes:

- Global issues... economic recession
 - Issues around the United States... political, sociological...
 - Regional Issues...Southwest
 - State Issues... multi cultural
 - Local issues... all of the above and much more...
- 

© Original Artist
Reproduction rights obtainable from
www.CartoonStock.com



search ID: tcn145

"I think we should have a word with Bob about his sales technique."

Fundamental challenges in schools: Students must ...

- ...continue to adapt to a status quo that no longer works for minority/majority students of color and students in general
-be challenged to grow
- ...must learn the basics



© 2000 Randy Glasbergen.
www.glasbergen.com



**"Thank you for calling Customer Service.
If you're calm and rational, press 1.
If you're a whiner, press 2.
If you're a hot head, press 3...."**

APS Ethnic Diversity

- ▶ 55% Hispanic



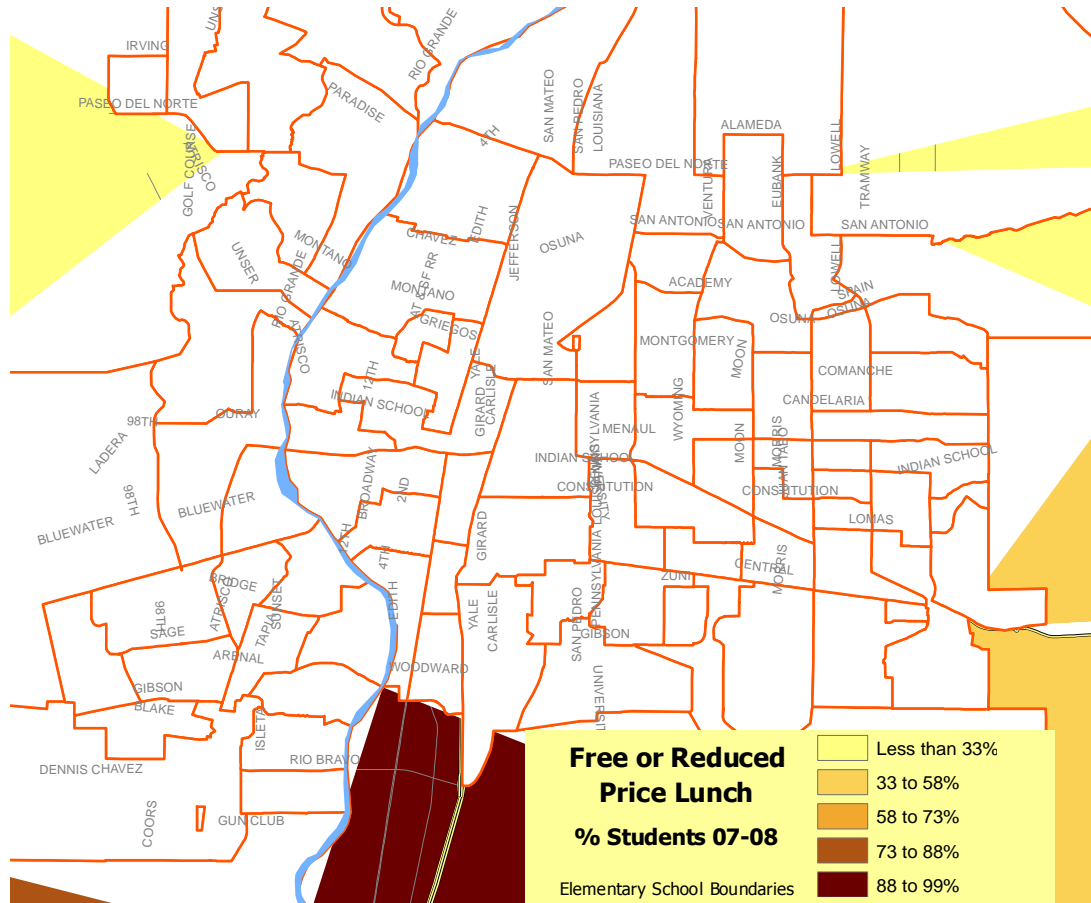
English Language Learners - 17%

Reduced Lunch - 56%



© 1994 United Feature Syndicate, Inc.

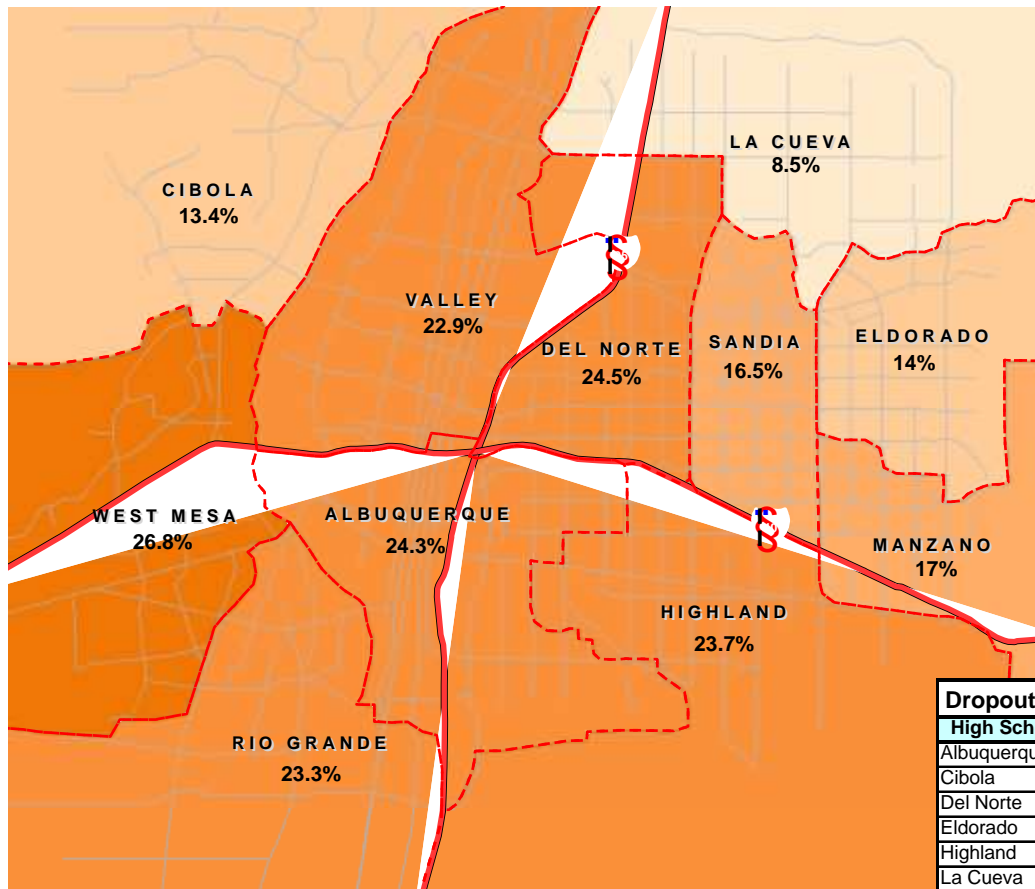
FREE OR REDUCED-PRICE LUNCH



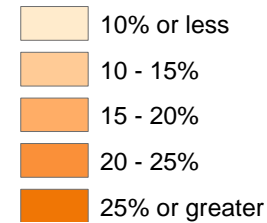
APS
56 percent
of students
qualify for
free or
reduced-
price lunch

More About APS Students

- Students earned more than \$45 million in scholarships in 2009
- 15,000 students in 50 schools are receiving bilingual educations
- More than 1 in 10 students are receiving special education services, including 1 in 20 who are receiving gifted education services
- Students with Disabilities – 15%



High School Dropout Rates (Average Rate, 2003-2008)



Dropout Rate by Race and Ethnicity, 2008

African American	18%
Asian	7%
Hispanic	20%
Native American	25%
White, Non-Hispanic	15%
ALL	17.8%

Source: APS-SIS, January 2009 ; Map: NMDOH, OCAPE

High School	2003	2004	2005	2007	2008	Average
Albuquerque	31.6%	23.1%	25.3%	22.1%	19.3%	24.3%
Cibola	13.3%	10.5%	14.6%	13.8%	14.7%	13.4%
Del Norte	26.8%	21.4%	23.1%	26.4%	24.6%	24.5%
Eldorado	15.4%	10.2%	15.4%	13.0%	16.1%	14.0%
Highland	27.9%	25.0%	21.5%	20.9%	23.3%	23.7%
La Cueva	8.1%	6.4%	9.6%	11.1%	7.4%	8.5%
Manzano	18.5%	14.1%	15.2%	15.8%	21.4%	17.0%
Rio Grande	36.2%	26.1%	23.8%	19.2%	11.4%	23.3%
Sandia	16.8%	18.3%	15.2%	17.8%	14.5%	16.5%
Valley	25.7%	20.7%	26.9%	22.4%	18.7%	22.9%
West Mesa	28.3%	25.6%	26.6%	29.0%	24.3%	26.8%
District	23.0%	18.4%	20.0%	19.2%	17.8%	19.7%

*Students who completed 40 days of 9th grade, did not graduate with their class, did not return a subsequent year, and for whom no valid transfer can be validated (cohort method). No data reported for 2006.
Source: APS-SIS, January 2009

APS graduation rate is 63.2%
(closer to 80% counting students who take more than four years to graduate)

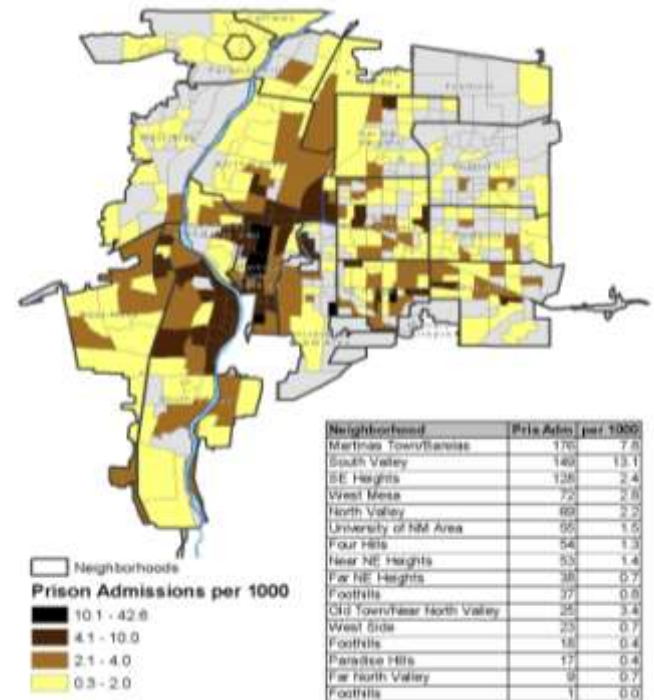
APS Strategies include...

- ▶ Implement extended school day for credit recovery at each high school
- ▶ AVID
- ▶ Emphasize Equity
- ▶ Become the flagship district to address issues for Hispanic students
- ▶ Board resolution to support Hispanic Education act as legislation
- ▶ Hold as much as possible to a non-partisan approach
- ▶ Use data to drive policy...

Prison Admission: Adults and Youth

FACTS ABOUT ADULT PRISON ADMISSIONS

- Residents from neighborhoods that have the most people going to prison (incarcerated) are imprisoned up to 30 times more often than the lowest.
- Two of Albuquerque's 16 neighborhood areas (87102 and 87105) account for 35 percent of all prison admissions from the city.
- 24 percent of all prison admissions from Albuquerque were admitted on the basis of violations of parole.

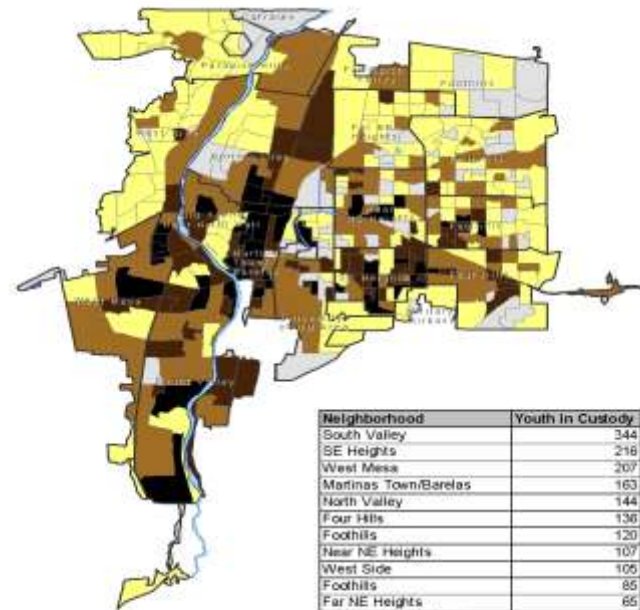


Prison Admission: Adults and Youth

FACTS ABOUT YOUTH ADMITTED TO JUVENILE JUSTICE CUSTODY

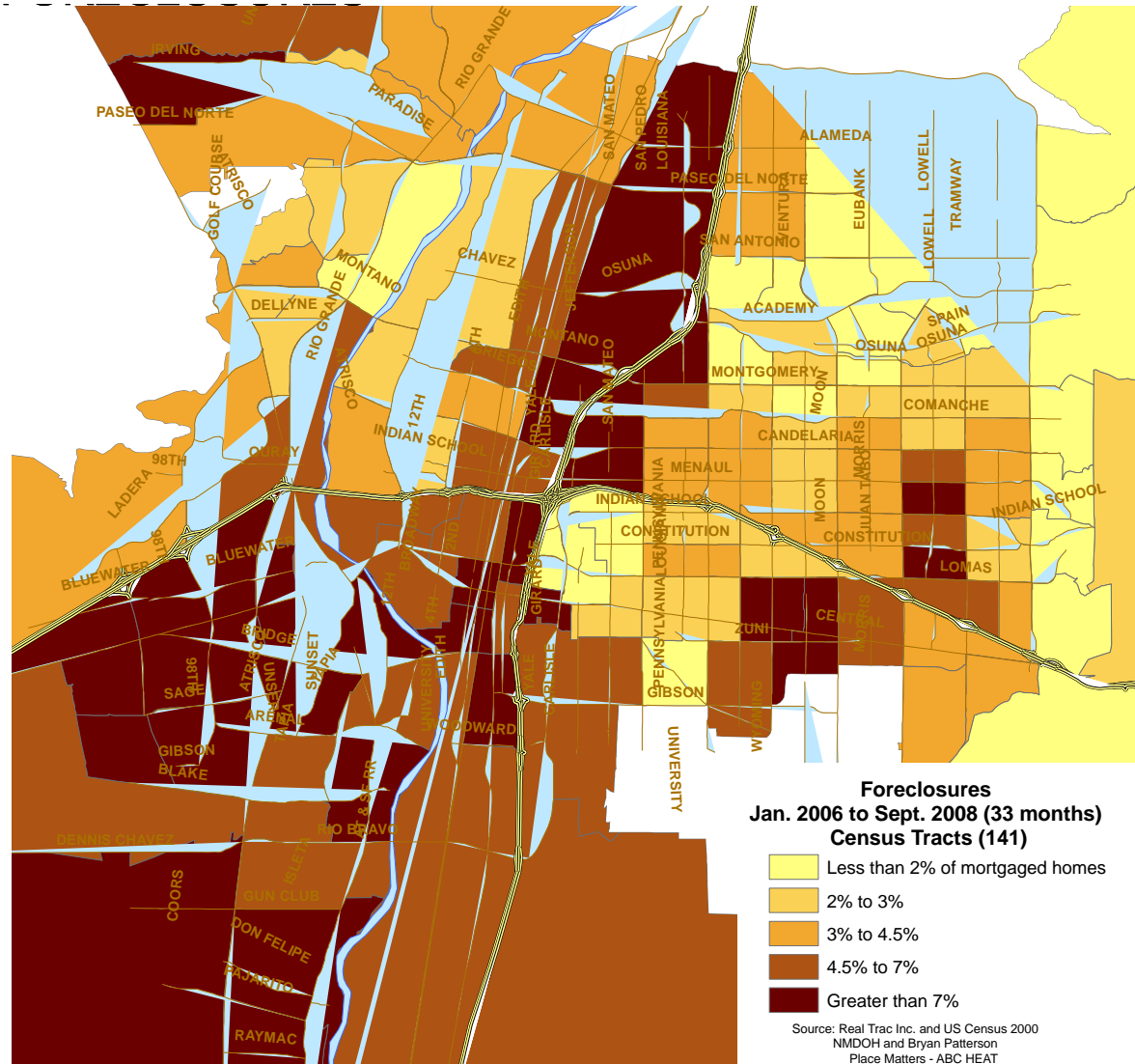
➤ In Martinez Town / Barelas (87102) and West Mesa (87121), youth are placed in detention at nearly 10 times the rate of youth in the West Side (87120) and Paradise Hill (87114) neighborhoods.

➤ The South Valley (87105), Southeast Heights (87108), West Mesa (87121), Martinez Town/Barelas (87102) neighborhood areas account for 50 percent of all juveniles admitted to custody from Albuquerque's 16 neighborhood areas.



Neighborhood	Youth in Custody
South Valley	344
SE Heights	218
West Mesa	207
Martinez Town/Barelas	163
North Valley	144
Four Hills	136
Foothills	120
Near NE Heights	107
West Side	106
Foothills	85
Far NE Heights	65
University of NM Area	62
Paradise Hills	60
Old Town/Near North Valley	57
Far North Valley	26
Foothills	13
Military Airbase	2
Military Airbase	1
Corrales	0

Foreclosures in Neighborhoods



PLACE MATTERS – ABC HEAT

Part of the National Dialogue

"Attention illegal immigrants"

Arizona does not welcome you, but Los Angeles loves you.



Free Housing, Free School, Free Food, Free Medical, and Free Hospital.

No Insurance cost, no taxes, and plenty of jobs.

Turn left on I-8 and follow your road to paradise!



SU VOTO ES
SU VOZ

Case Study

Hispanic Education Act



- ▶ Creates a formal Hispanic Advisory Council that will institutionalize statewide community engagement

Case Study

Hispanic Education Act

- Requires the New Mexico Public Education Department to provide an annual status report on the state of Hispanic education

Case Study

Hispanic Education Act

- ▶ Creates a Hispanic Education Liaison to focus on Hispanic education policy, developing a strategic approach to close the achievement and graduation gaps, serve as a resource for districts and work with the council

The Act as a tool to build successful community engagement

- ▶ Purpose of the Act: To engage the community in a more formal and consistent way in helping to define challenges and address student performance.
- ▶ The act commits the state and school districts to focus on improving student achievement.
- ▶ The Act builds accountability into the education system.



Hope for future success in building community engagement

- ▶ Sets a standard and expectation for all involved.
- ▶ Focuses attention on the serious issues that impact how New Mexico's work force competes regionally and nationally.
- ▶ Uses existing resources more efficiently to ensure results among all socio-economic and ethnic groups.



For Additional District Details and Copies of this Presentation, go to

- ▶ <http://www.aps.edu/about-us/district-information>
- ▶ <http://www.aps.edu/about-us/board/board-members/lorenzo-l.-garcia>

